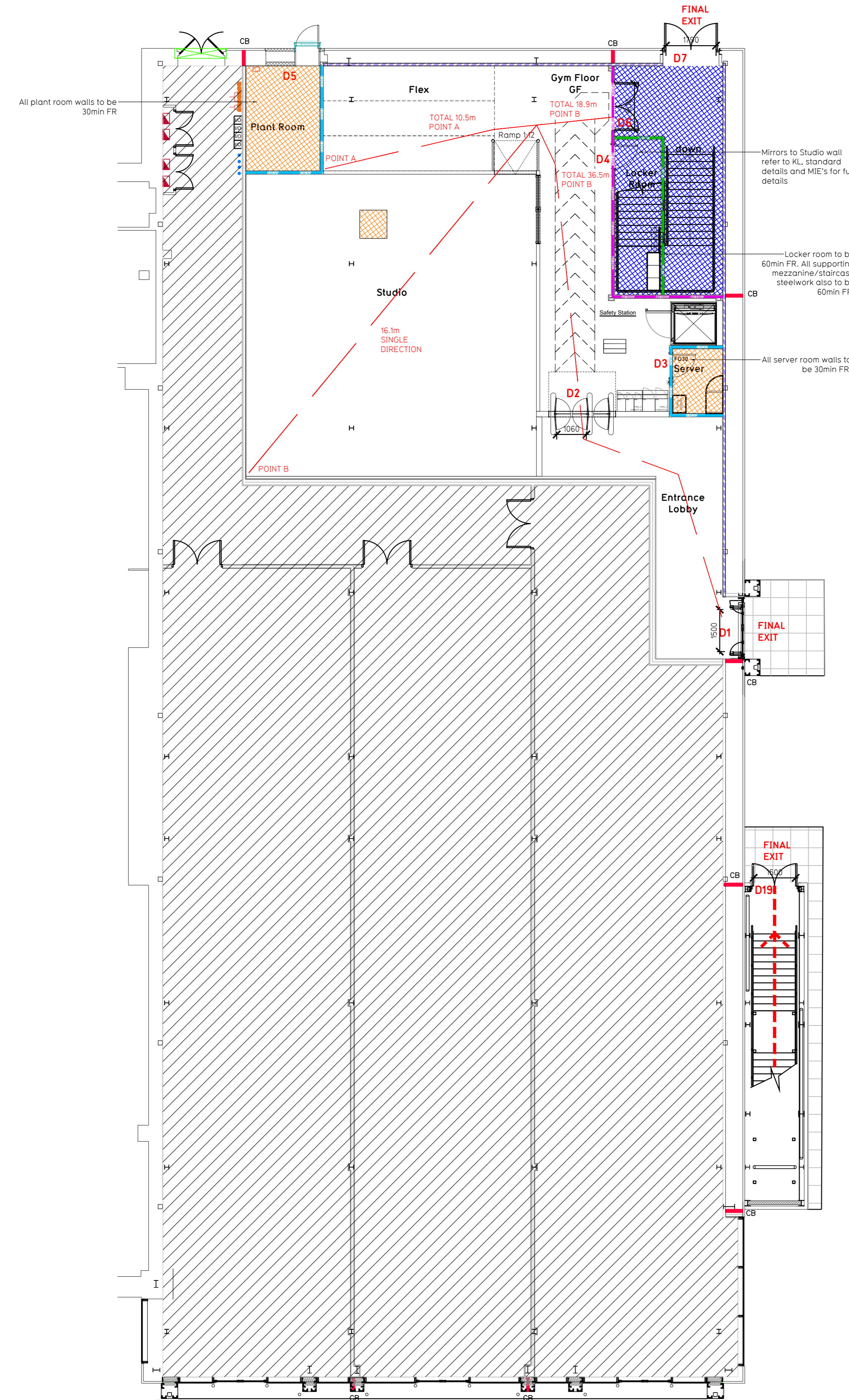
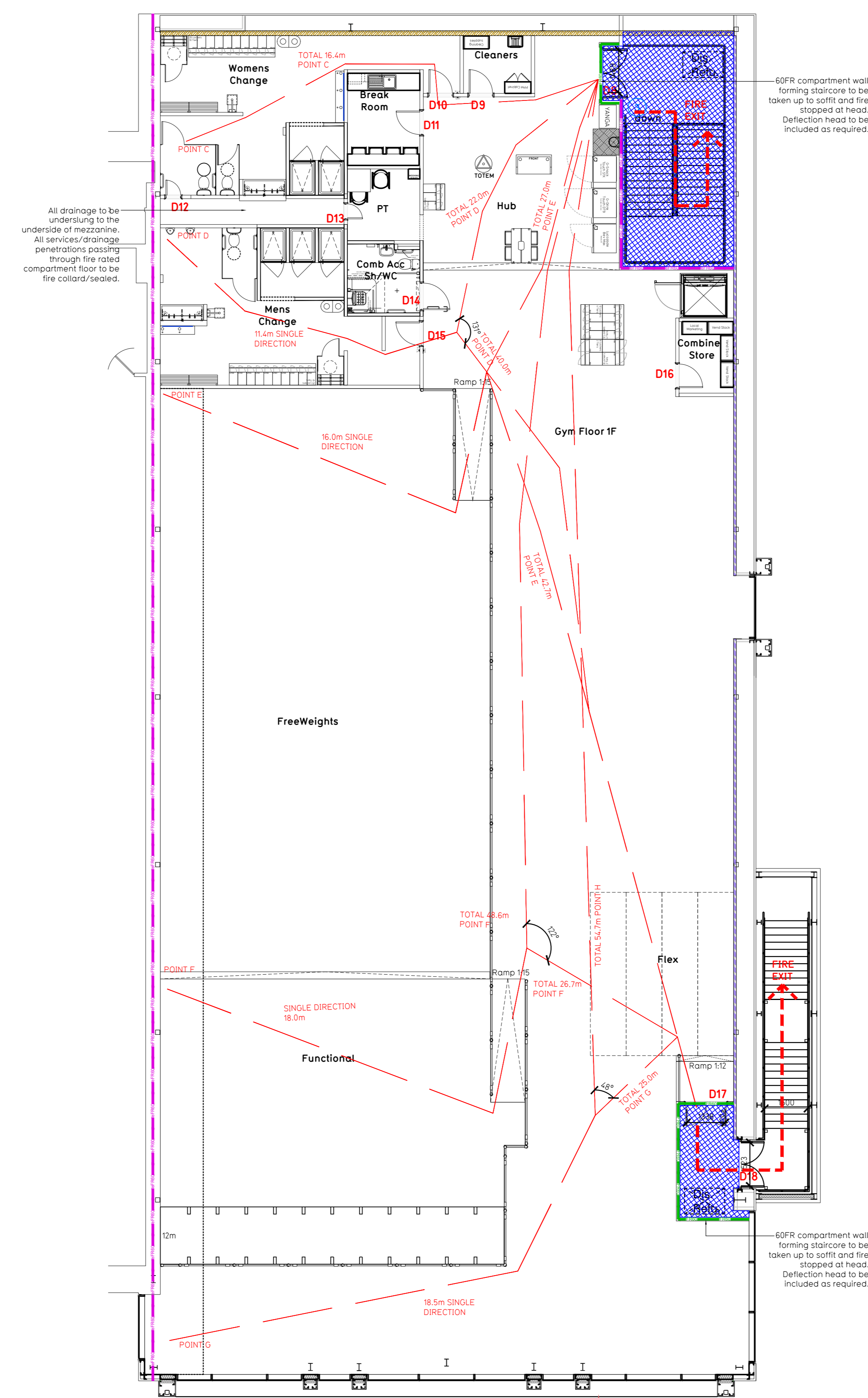


NOTE:

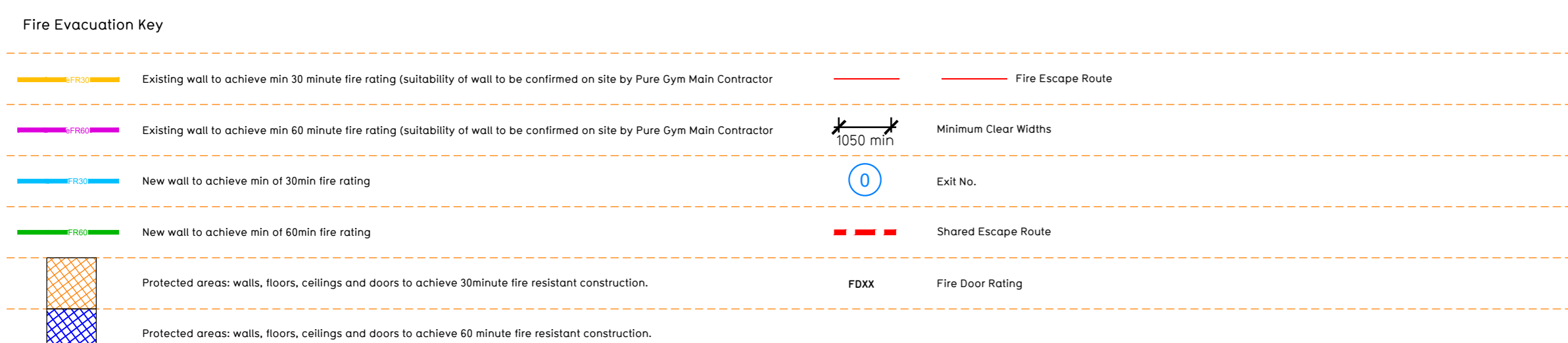
- Proposals must comply with all acoustic, fire & building regulation requirements
- No dimensions are to be scaled from this drawing. The contractor is responsible for checking all dimensions on site



Proposed Ground Floor Plan



Proposed First Floor Plan



Escape Route Width
 In line with Section 2.11 & 2.12 of approved Document Part B, Volume 2 - buildings other than dwellings, the adjacent calculations provide indication for the clear opening widths for escape from each floor level, room in accordance with Table B.4, Appendix C.

Ground Floor
 Final Exit D1 (linked by Storey Exit D1 Clear Opening Width = 1050mm) allows 211 persons to escape
 Final Exit D2 (linked by Storey Exit D2 Clear Opening Width = 1050mm) allows 211 persons to escape
 Final Exit D3 (linked by Storey Exit D3 Clear Opening Width = 1050mm) allows 211 persons to escape (largest opening to be discounted)

Mezzanine Floor
 Storey Exit D11 (Clear Opening Width = 1050mm) allows 117 persons to escape
 Storey Exit D12 (Clear Opening Width = 1050mm) allows 117 persons to escape
 The Main staircase has a mezzanine floor from the mezzanine and ground floors and therefore, W(LIN/2.1) + (6550/90) must be used.
 FR & Lion door (D1) is linked to 12 people and is 1.5m, then the 1050mm clear door.

Notes on use of FR/FRAG: Self-Protecting Non-Combustible (SP-NC)
 Calculated using Purgenym Fire Safety Occupancy Levels Forecast Tool.
 The designed occupancy of the unit is calculated based on the area, no. of exits, no. of exits persons to escape, which is larger than the total permitted occupancy of 117 Persons and is therefore thought to meet with the approved Document Part B. To allow free movement between the floors the occupancy has not been split 50/50, but rather allows for occupancy based on gym stations and functions ensuring that a high percentage of the total occupancy could be on a single floor or any one time.

Fire Alarm
 Fire Alarm designed and installed to BS 5833. Smoke & heat detection / emergency lighting by specialist. Please refer to M&E engineer's drawings / specifications.

Escape Lighting
 Emergency escape lighting designed and installed in accordance with BS 5266, Part 1. Please refer to M&E Engineer's drawings for final layout and specification.

Fire Stoppings
 All structural edges of mezzanine to be appropriately fire stopped to create compartment floor and protect mezzanine structure. All service and bridge penetrations passing through the rated compartment floor to be fire sealed/protected.

Mezzanine
 Mezzanine design (SP-NC) new mezzanine structure including deck and column connections to be min 60min FR using a boarded solution. Ceiling to be clear and flat made to receive decoration. Services penetrations to be fire stopped and sealed to suit the rating.

Fire Stopping and Emergency Lighting by COF
 Under the final specification. Details of contractor proposals to be provided to Building Control Approved Inspector and Fire Officer within the Contractor's Proposal Package, Clause 14

| | | | |
|--|----------|---|---------------|
| LONDON COLNEY Cotney Fields Shopping Park, St Albans, AL2 1AB | | Fire Evacuation Plan Ground Floor & First Floor | |
| Rev | Date | Description | Drawn/Checked |
| 000 | 18.12.23 | Construction Issue | SK/WLT |
| 001 | 05.12.23 | 1:100 @ A0 | 1004 1003-FEP |
| CONSTRUCTION | | PUREGYM | |
| PUREGYM | | Pure Gym Ltd Town Centre House The Meriton Centre Leeds LS2 8LY www.puregym.com t: 0113 266 0197 www.puregym.com | |