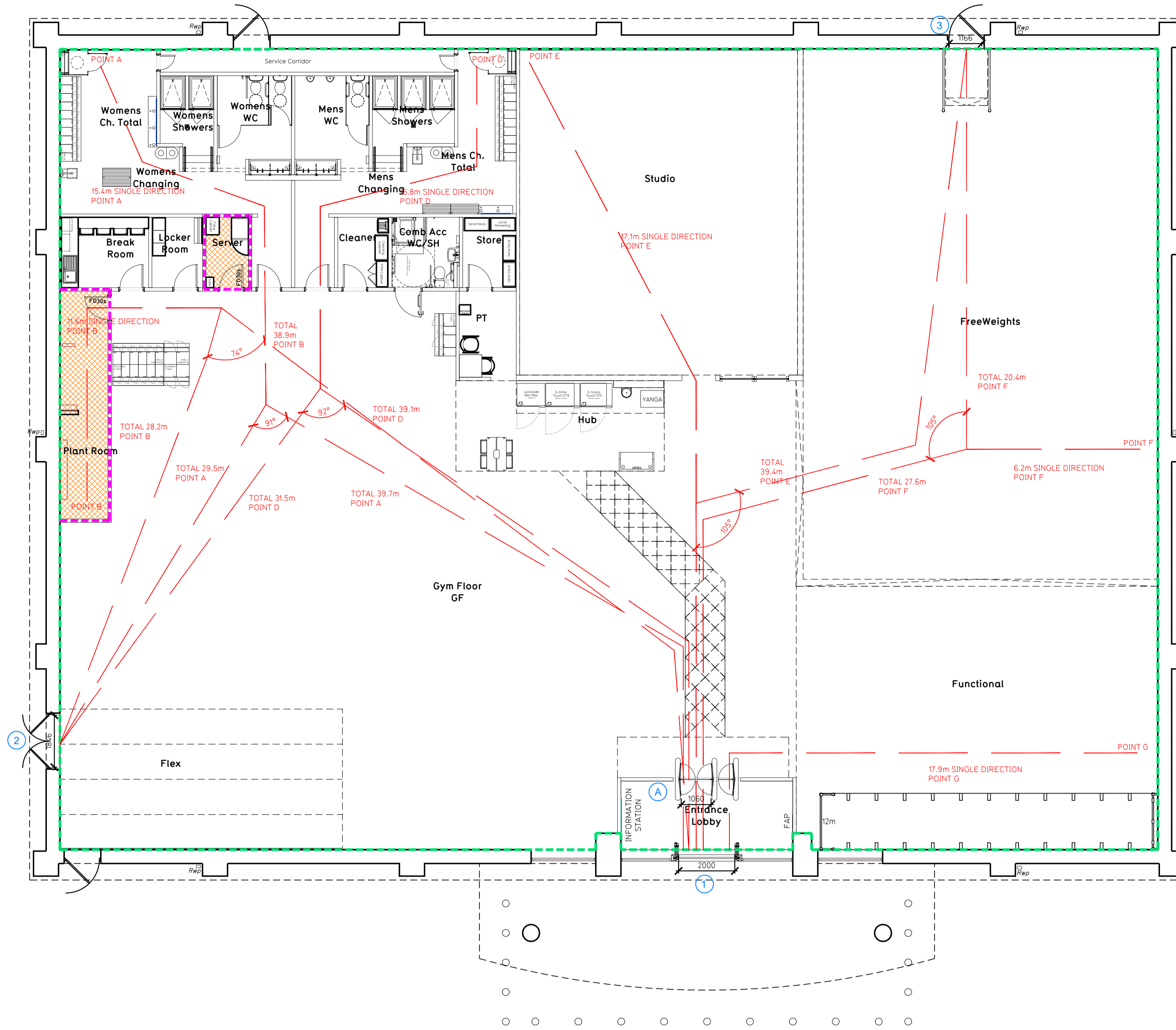


- NOTE:
- Proposals must comply with all acoustic, fire & building regulation requirements
 - No dimensions are to be scaled from this drawing. The contractor is responsible for checking all dimensions on site



Fire Evacuation Key

	Existing wall to achieve min 30 minute fire rating (suitability of wall to be confirmed on site by Pure Gym Main Contractor)		Fire Escape Route
	Existing wall to achieve min 60 minute fire rating (suitability of wall to be confirmed on site by Pure Gym Main Contractor)		Minimum Clear Widths
	New wall to achieve min of 30min fire rating		Exit No.
	New wall to achieve min of 60min fire rating		Shared Escape Route
	Protected areas: walls, floors, ceilings and doors to achieve 30minute fire resistant construction.		FDXX Fire Door Rating
	Protected areas: walls, floors, ceilings and doors to achieve 60 minute fire resistant construction.		

Escape Route Widths:
 In line with Sections 3.21.6, 3.32 of 'Approved Document Part B, Volume 2 - buildings other than dwelling houses' - the adjacent calculations provide justification for the clear opening widths for escape from each floor level/ room in accordance with Table 4 & Appendix C.

Ground Floor
 Exit 1 is restricted by A, Exit A Clear Opening Width = 1060mm (allows 222 persons to escape)
 Exit 2 Clear Opening Width = 1846mm (allows 379 persons to escape) largest opening to be discounted
 Exit 3 Clear Opening Width = 166mm (allows 23 persons to escape)
 Total Aggregate Width for Floor (Less Largest Opening Width of 1846 from A = 2226mm (allows 465 persons to escape)

Total
 Total = 465 persons to escape
 Based on a NIA of 11945.8 sqft, the Puregym Peak Occupancy Target = 207 Persons
 Calculated using Puregym Fire Safety Occupancy Levels Forecast Tool.

The designed occupancy of the unit as calculated below would allow a max. No. of 465 persons to escape, which is larger than the total estimated occupancy capacity of 207 Persons and is therefore thought to meet with the Approved Document Part B.

Fire Alarm
 Fire Alarm designed and installed to BS 5839. Smoke & heat detection / emergency lighting by specialist. Please refer to M&E engineer's drawings / specifications.

Escape Lighting
 Emergency escape lighting designed and installed in accordance with BS 5266: Part 1. Please refer to M&E Engineer's drawings for final layout and specification.

Escape Signage and emergency lighting is CDP under the M&E specification. Details of contractors proposals to be provided to Building Control Approved Inspector and Fire Officer within the Contractors Proposals Package, Clause 14.

Rev	Date	Description	Drawn/Checked
PROJECT TITLE		DRAWING TITLE	
Merthyr Tydfil Unit D, Pentrebach Retail Park, CF48 4TQ		Fire Evacuation Plan Ground Floor Plan	
DRAWN/checked	DATE	SCALE	DWG No.
SKJ/CS	26.06.23	1:100 @ A1	2227
DRAWING PURPOSE			Rev
CONSTRUCTION			C00

PUREGYM

Pure Gym Ltd
 Town Centre House
 The Merrion Centre
 Leeds
 LS2 8LY
 e: architecture@puregym.com
 t: 0113 285 8787
 w: www.puregym.com