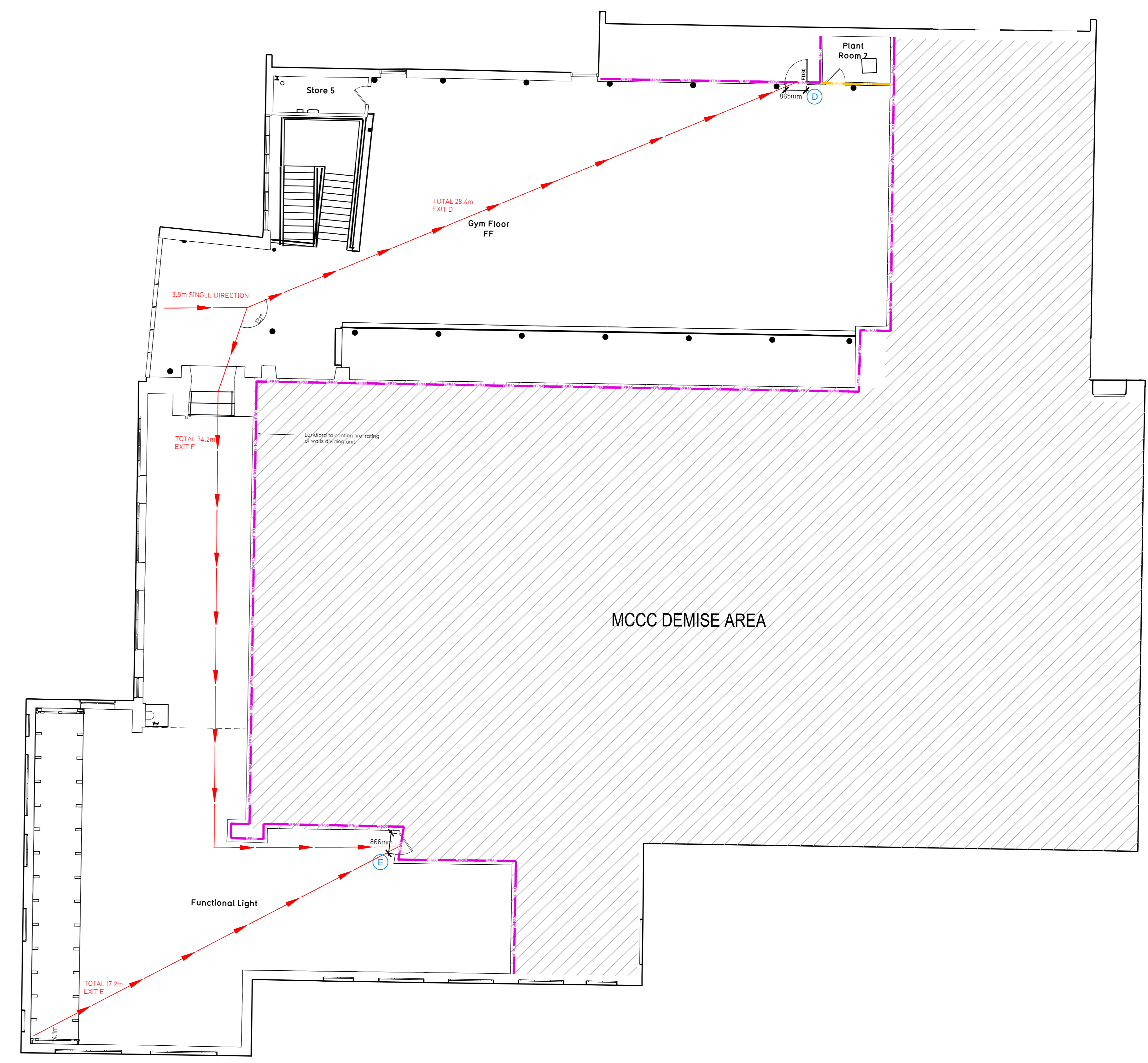


NOTE:

- Proposals must comply with all acoustic, fire & building regulation requirements
- No dimensions are to be scaled from this drawing. The contractor is responsible for checking all dimensions on site



Proposed Ground Floor Plan



Proposed First Floor Plan

Fire Evacuation Key

- Existing wall to achieve min 30 minute fire rating (suitability of wall to be confirmed on site by Pure Gym Main Contractor)
- Existing wall to achieve min 60 minute fire rating (suitability of wall to be confirmed on site by Pure Gym Main Contractor)
- New wall to achieve min of 30min fire rating
- New wall to achieve min of 60min fire rating
- Protected areas: walls, floors, ceilings and doors to achieve 30 minute fire resistant construction
- Protected areas: walls, floors, ceilings and doors to achieve 60 minute fire resistant construction

Fire Escape Route

- Fire Escape Route
- Shared Escape Route

Minimum Clear Widths

- 850mm

Exit No.

- Exit No.

Fire Door Rating

- FD30

Escape Route Widths:
In accordance with BS 5839-1 & 3.22 of Approved Document B, Volume 2 - buildings other than dwellings - the adjacent calculations provide justification for the clear opening widths for escape from each floor level/ zone in accordance with Table 4 & Appendix C.

Ground Floor:
Final Exit 1: Limited by Storey Exit A Clear Opening Width = 1800mm (allows 10 persons to escape, target opening to be discussed)
Final Exit 2: Limited by Storey Exit B Clear Opening Width = 1800mm (allows 10 persons to escape)
Final Exit 3: Clear Opening Width = 1800mm (allows 10 persons to escape)
Final Exit 4: Clear Opening Width = 1800mm (allows 10 persons to escape)
Final Exit 5: Limited by Storey Exit C Clear Opening Width = 1800mm (allows 10 persons to escape)
Ground Floor = 200 persons to escape

First Floor:
Final Exit 1: Limited by Storey Exit D Clear Opening Width = 1800mm (allows 10 persons to escape)
Final Exit 2: Limited by Storey Exit E Clear Opening Width = 1800mm (allows 10 persons to escape, target opening to be discussed)
First Floor = 10 persons to escape

Based on MA of 18 JUNE 2022, the Purge/peak occupancy target = 200 Persons
Calculated using Purge/peak Fire Safety Occupancy Area/Personnel Table.
The designed occupancy of the unit as calculated would allow a max. No. of 100 persons to escape, which is larger than the total estimated occupancy capacity of 200 persons and is therefore thought to meet with the Approved Document Part B.

Fire Alarm:
Fire Alarm designed and installed to BS 5839-1, Smoke L, heat detection / emergency lighting by specialists. Please refer to M&E engineer's drawings / specifications.

Escape Lighting:
Emergency escape lighting designed and installed in accordance with BS 5266-1. Please refer to M&E Engineer's drawings for final layout and specification.

Fire Stopping:
All perimeter edges of the lobbies to be appropriately fire stopped to create compartment safety. All services/structure penetrations passing through the rated compartment to be fire sealed/sealed.

Escape signage and emergency lighting is COP under the M&E specification. Details of contractors proposals to be provided to Building Control Approved Inspector and Fire Officer within the Contractors Technical Package, Clause 4.

Rev	Date	Description	Checked	Drawn	Checked
01	19/09/23	Issue for RFP			
02	11/10/23	Issue for RFP			

London Finchley Refurb
East End Road, Finchley, London N3 2TA

Fire Evacuation Plan
Ground & First Floor Plans

TT/HS | 19/09/23 | 11/10/23 | 0134 | 0X-003-FEP

RECORD

PUREGYM

Pure Gym Ltd
Town Centre House
The Merrion Centre
Leeds
LS2 8LY
www.puregym.com