

NOTE:

- Proposals must comply with all acoustic, fire & building regulation requirements
- No dimensions are to be scaled from this drawing. The contractor is responsible for checking all dimensions on site

Escape Route Widths

In line with Section 2.9.8 of the Technical Handbook - Non Domestic, the aggregate unobstructed width in m of all escape routes from a room, or storey, should be at least 5.3 x the occupancy capacity of the room or storey.

Ground Floor
 Aggregate Clear Opening Width of Escape Routes Calculation:
 Final Fire Exit D2, clear opening width = 1050mm
 Final Fire Exit EX2, clear opening width = 1010mm
 Final Fire Exit EX1, clear opening width = 1010mm
 Total Aggregate Width for Ground Floor 3110(Less Largest Opening Width 1050mm from Fire Exit D2) = 2060mm
 Ground Floor Maximum Occupancy Capacity = 2060 / 5.3 = 388 people
 The maximum escape capacity of the Ground Floor = 388 persons. The target occupancy of the gym is 200 persons based on the sanitary provisions and is therefore thought to meet with Section 2.9.8 of The Technical Handbook.

Escape Distance and Angle of Divergence

Position A

Total escape to nearest Final Exit D1 = 26.3m
 Distance before divergence is 13.1m
 A.O.D to be > $(2.5 \times 13.1) + 45 = 77.75^\circ$
 Drawn A.O.D = 161° thus complies

Position B

Total escape to nearest Final Exit D18 = 29.7m
 Distance before divergence is 9.5m
 A.O.D to be > $(2.5 \times 9.5) + 45 = 68.75^\circ$
 Drawn A.O.D = 80° thus complies

Position D

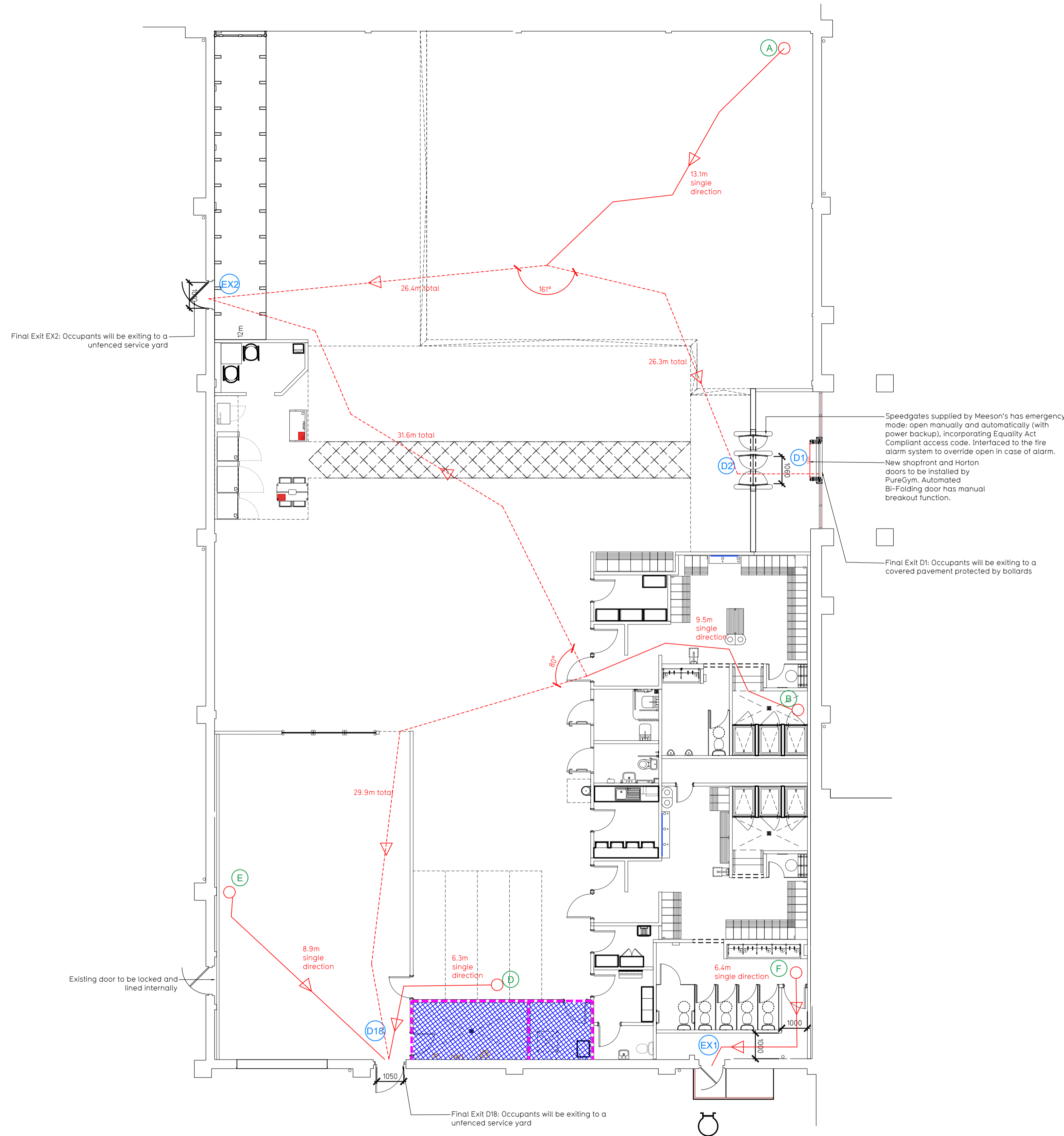
Total escape distance to nearest Final Exit Door D18 = 6.3m
 This is less than the maximum travel distance of 12m and thus complies.

Position E

Total escape distance to nearest Final Exit Door D18 = 8.9m
 This is less than the maximum travel distance of 12m and thus complies.

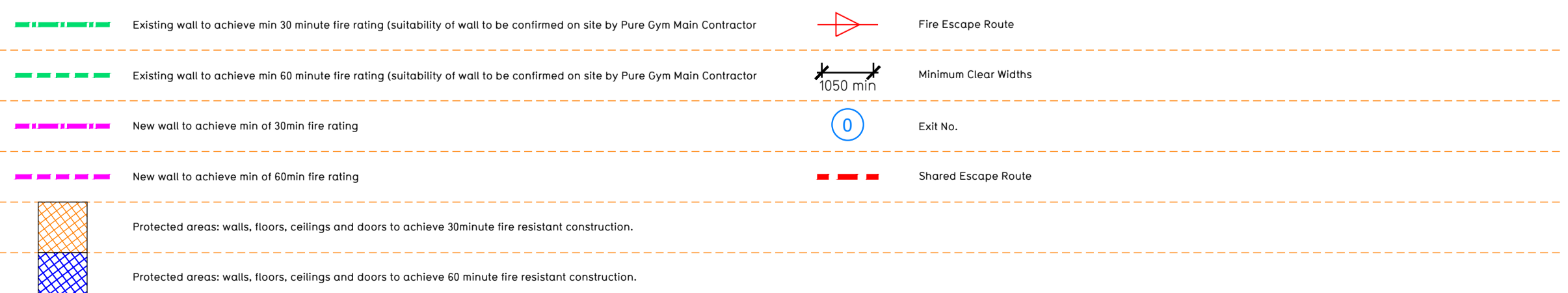
Position F

Total escape distance to nearest Final Exit Door EX1 = 6.4m
 This is less than the maximum travel distance of 12m and thus complies.



Proposed Ground Floor Plan

Fire Evacuation Key



Sprinklers
 System design and installed in compliance with BS EN 12845:2015 & LPC Technical Bulletins

Fire Alarm
 Fire Alarm designed and installed to BS 5839. Smoke & heat detection / emergency lighting by specialist. Please refer to M&E engineer's drawings / specifications.

Escape Lighting
 Emergency escape lighting designed and installed in accordance with BS 5266: Part 1. Please refer to M&E Engineer's drawings for final layout and specification.

Smoke Extract
 Smoke EXTRACT System to be designed and installed in accordance with BS 7346: Part 8. Please refer to M&E Engineer's drawings for final layout and specification.

Escape Signage and emergency lighting is CDP under the M&E specification. Details of contractors proposals to be provided to Building Control Approved Inspector and Fire Officer within the Contractors Proposals Package, Clause 14

Rev	Date	Description	Drawn/Checked
C01	24.05.23	Vending updated. Water fountain relocated.	SKI/JM
PROJECT TITLE		DRAWING TITLE	
Dumfries Unit 4 Dumfries Retail Park, Dumfries DG2 0NU		Fire Evacuation Plan Ground Floor Plans	
DRAWING NO.	DATE	SCALE	ISS. NO.
SK/L	20.02.23	1:100 @ A1	2053
DRAWING PURPOSE	SCALE	ISS. NO.	DRAWING No.
CONSTRUCTION		003-FEP	
			Rev
			C01

Pure Gym Ltd
 Town Centre House
 The Merrion Centre
 Leeds
 LS2 9LY

e: architecture@puregym.com
 t: 0113 285 8787
 w: www.puregym.com