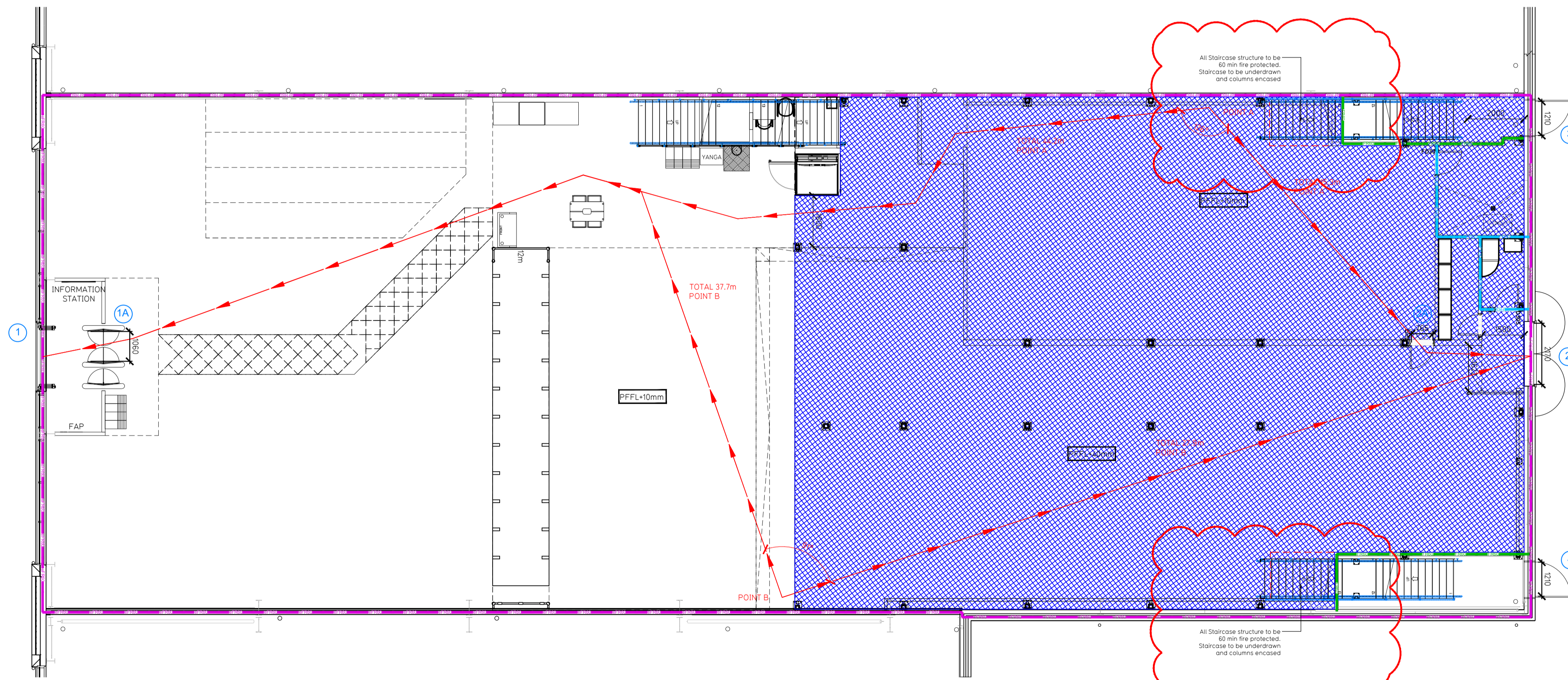
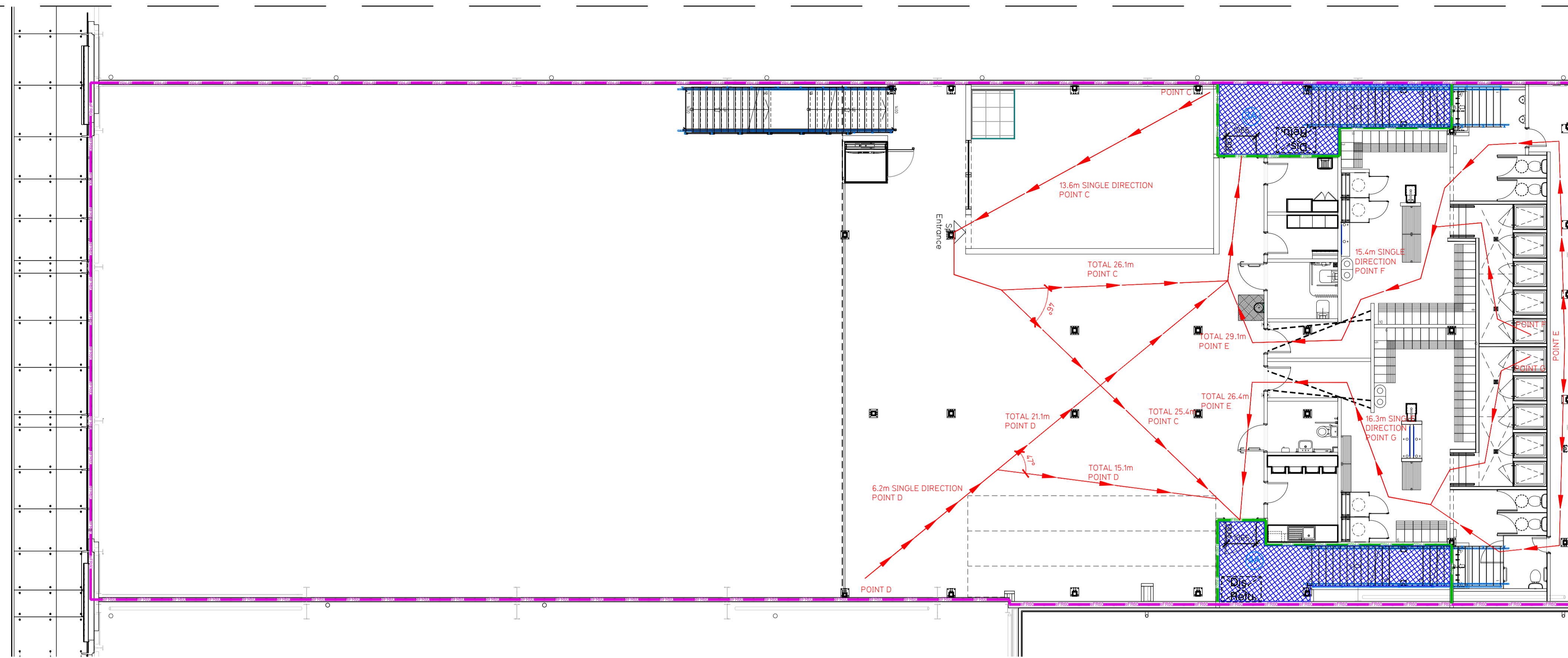
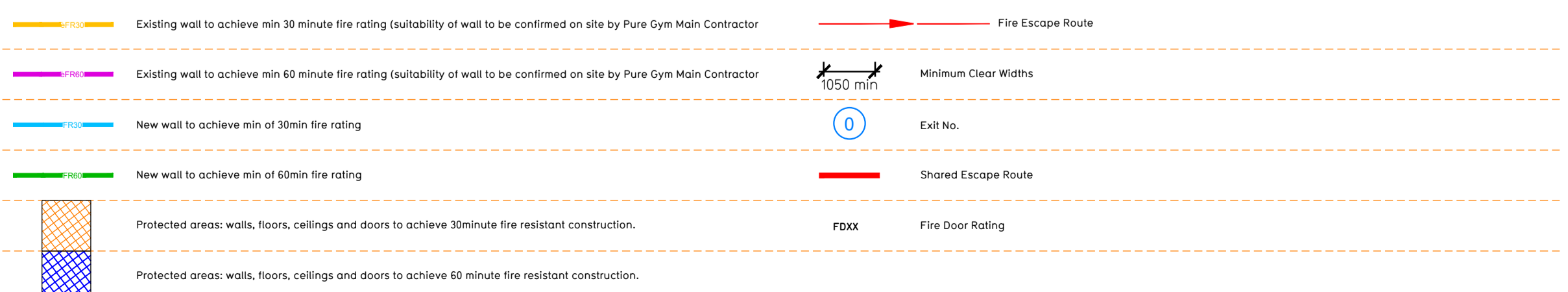


NOTE:

- Proposals must comply with all acoustic, fire & building regulation requirements
- No dimensions are to be scaled from this drawing. The contractor is responsible for checking all dimensions on site



Fire Evacuation Key



Escape Route Widths:
In line with Sections 3.216, 3.322 of 'Approved Document Part B, Volume 2 - buildings other than dwellings' - the adjacent calculations provide justification for the clear opening widths for escape from each floor level/ room in accordance with Table 4 & Appendix C.

Ground Floor
Exit 1 is restricted by Exit 1A Clear Opening Width = 1060 (allows 222 persons to escape)
Exit 2 Clear Opening Width = 2170mm (allows 444 persons to escape, largest opening to be discounted)
Ground Floor Total Estimated Occupancy Capacity = 223 Persons.

Mezzanine Floor
Exit 3 is restricted by Exit 3A Clear Opening Width = 1065 (allows 223 persons to escape)
Exit 4 is restricted by Exit 4 A Clear Opening Width = 1065mm (allows 223 persons to escape)
Total Aggregate Width for Floor (Less Largest Opening Width of 1065mm from either Exit) = 1065mm
Mezzanine Floor Total Estimated Occupancy Capacity = 223 Persons.

Total
Ground Floor = 222 persons to escape
Mezzanine Floor = 223 persons to escape
TOTAL = 445 persons to escape

Sprinklers
System design and installed in compliance with BS EN 1884:2015 & LPS Technical Bulletins

Fire Alarm
Fire alarm designed and installed to BS 5839. Smoke & heat detection / emergency lighting by specialist. Please refer to MSE Engineer's drawings & specifications.

Escape Lighting
Emergency escape lighting designed and installed in accordance with BS 5266: Part 1. Please refer to MSE Engineer's drawings for final layout and specification.

Smoke Extract
Smoke Extract System to be designed and installed in accordance with BS 7346: Part 8. Please refer to MSE Engineer's drawings for final layout and specification.

Escape Signage and emergency lighting is CDP under the MSE specification. Details of contractors proposals to be provided to Building Control Approved Inspector and Fire Officer within the Contractors Proposals Package, Clause 14.

C01	20.04.23	Mezz. layout updated. Bulkheads shown & note added.	SKI/JM
Rev	Date	Description	Drawn/Checked

PROJECT TITLE		DRAWING TITLE	
Liverpool Edge Lane Unit 45, Edge Lane, L7 9LB		Fire Evacuation Plan Ground and Mezzanine Floor Plans	
SK/JM	08.03.23	1:100 @ A1	2251
003-FEP			

CONSTRUCTION

Pure Gym Ltd
Town Centre House
The Meriton Centre
Leeds
LS2 9LY

e: architecture@puregym.com
t: 0113 285 6787
w: www.puregym.com