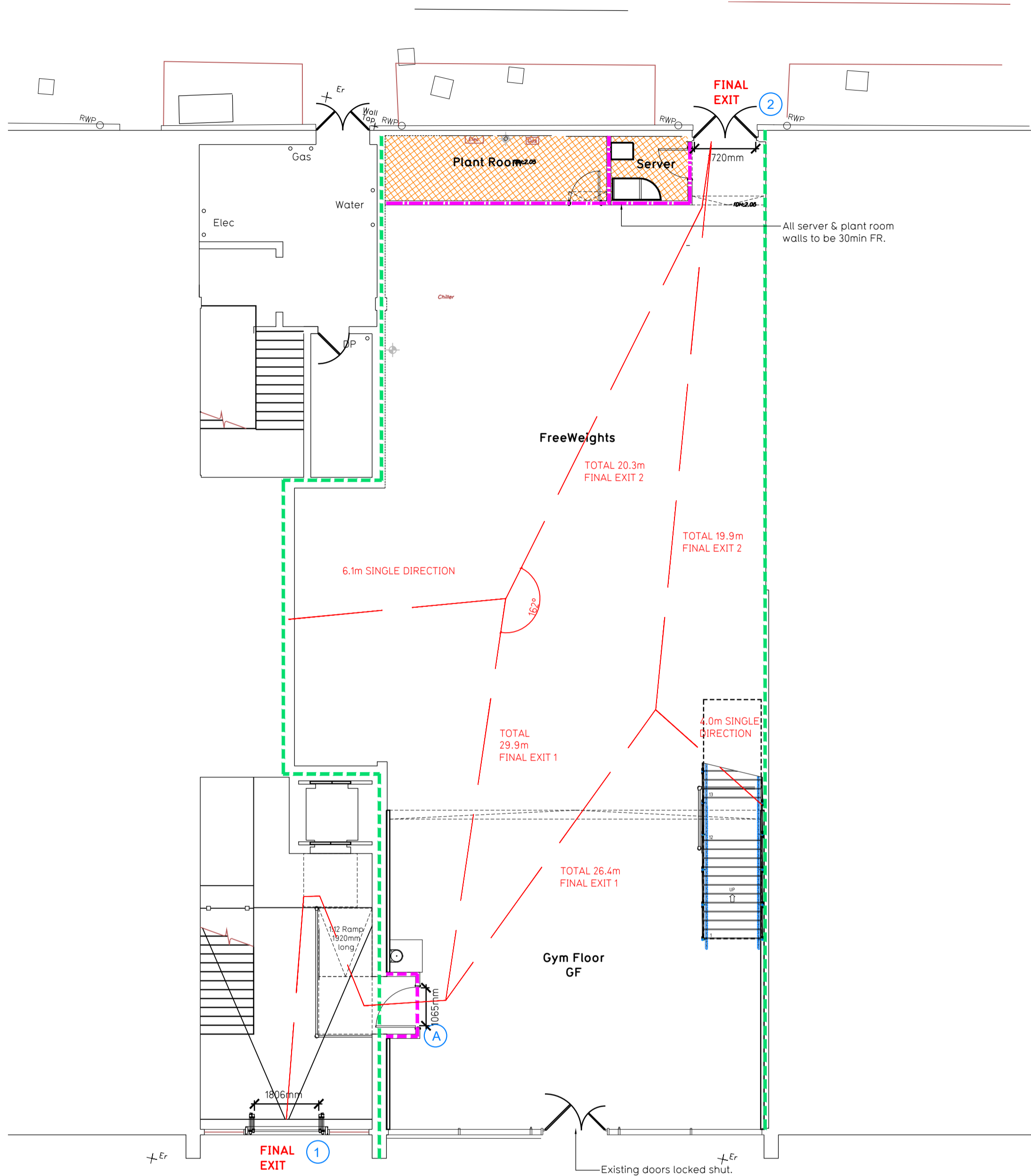
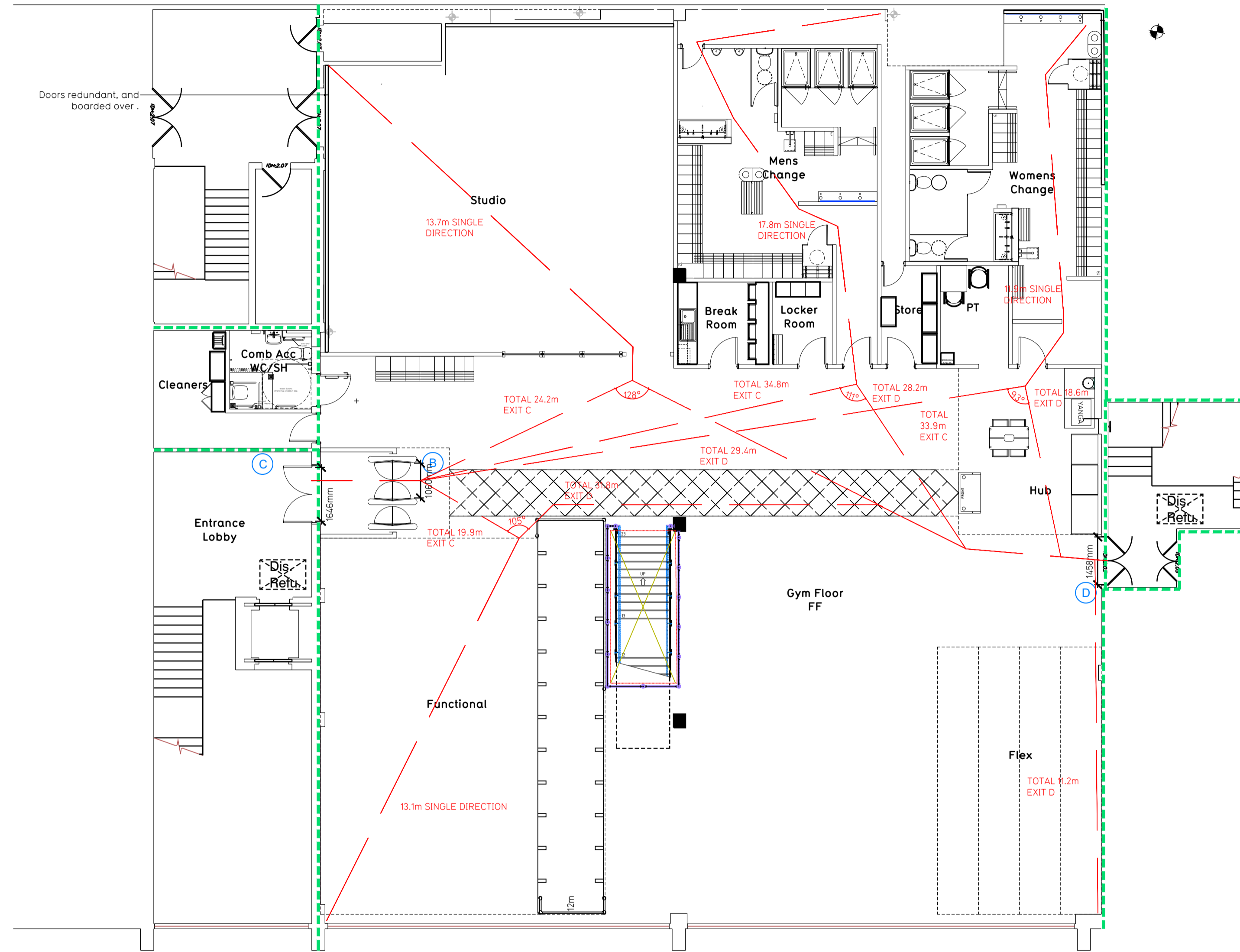


NOTE:

- Proposals must comply with all acoustic, fire & building regulation requirements
- No dimensions are to be scaled from this drawing. The contractor is responsible for checking all dimensions on site



Proposed Ground Floor Plan



Proposed First Floor Plan

Fire Evacuation Key

	Existing wall to achieve min 30 minute fire rating (suitability of wall to be confirmed on site by Pure Gym Main Contractor)		Fire Escape Route
	Existing wall to achieve min 60 minute fire rating (suitability of wall to be confirmed on site by Pure Gym Main Contractor)		Minimum Clear Widths
	New wall to achieve min of 30min fire rating		Shared Escape Route
	New wall to achieve min of 60min fire rating		
	Protected areas: walls, floors, ceilings and doors to achieve 30minute fire resistant construction.		
	Protected areas: walls, floors, ceilings and doors to achieve 60 minute fire resistant construction.		

Escape Route Widths:
 In line with Sections 3.21 & 3.22 of 'Approved Document Part B, Volume 2 - buildings other than dwellings' - the adjacent calculations provide justification for the clear opening widths for escape from each floor level/ room in accordance with Table 4 & Appendix C.

Ground Floor
 Final Exit 1 Fed by Storey Exit A Clear Opening Width = 1806mm (escape occupancy limited by Storey Exit A Clear Opening Width = 1065mm, allows 223 persons to escape)
 Final Exit 2 Clear Opening Width = 1720mm (allows 354 persons to escape, largest opening to be discounted)
 Total Aggregate Width for Floor (Less Largest Opening Width of 1720mm from FINAL EXIT 2) = 1065mm

First Floor
 Final Exit 1 Fed by Storey Exit A Clear Opening Width = 1806mm (escape occupancy limited by Storey Exit A Clear Opening Width = 1065mm, allows 223 persons to escape)
 Final Exit 2 Clear Opening Width = 1720mm (allows 354 persons to escape, largest opening to be discounted)
 Total Aggregate Width for Floor (Less Largest Opening Width of 1720mm from FINAL EXIT 2) = 1065mm

Total
 Ground Floor = 223 persons to escape
 First Floor = 222 persons to escape
 Total = 445 persons to escape

Based on NIA of 1088sqm, the Puregym peak occupancy target = 114 persons
 Calculated using Puregym Fire Safety Occupancy Levels Forecast Tool.

The designed occupancy of the unit as calculated would allow a max. No. of 445 persons, which is larger than the total estimated occupancy target of 114 persons and is therefore thought to meet with the Approved Document Part B. To allow free movement between the floors the occupancy has not been split 50/50%, but rather allows for occupancy based on gym stations and function assuming that a high percentage of the total occupancy could be on a single floor at one time.

Fire Alarm
 Fire alarm designed and installed to BS 5839. Smoke & heat detection / emergency lighting by specialist. Please refer to MSE engineer's drawings / specifications.

Escape Lighting
 Emergency escape lighting designed and installed in accordance with BS 5266: Part 1. Please refer to MSE Engineer's drawings for final layout and specification.

Escape Signage and emergency lighting is CDP under the MSE specification. Details of contractors proposals to be provided to Building Control Approved Inspector and Fire Officer within the Contractors Proposals Package, Clause 1.4

Rev	Date	Description	Drawn/Checked

Yate Units R3 & R6, Riverside RP, Link Rd, Yate BS37 4FT		Fire Evacuation Plan Ground Floor and First Floor	
DATE	SCALE	SCALE	DRAWING NO.
18.10.22	1:100 @ A1	2190	003-FEP
DRAWING PURPOSE		Rev	
CONSTRUCTION		C00	

Pure Gym Ltd
 Town Centre House
 The Merrion Centre
 Leeds
 LS2 8LY
 e: architecture@puregym.com
 t: 0113 285 8787
 w: www.puregym.com