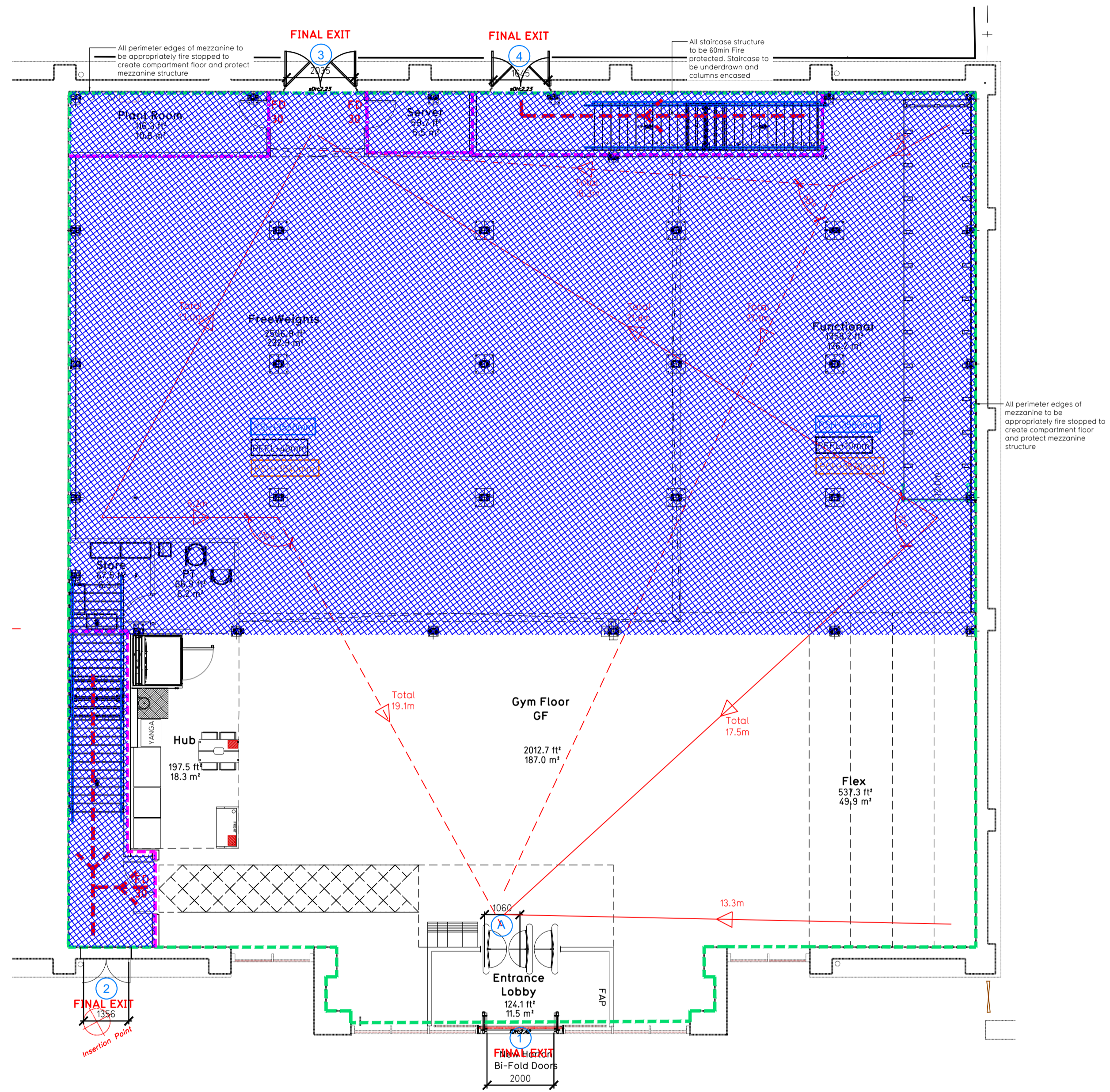
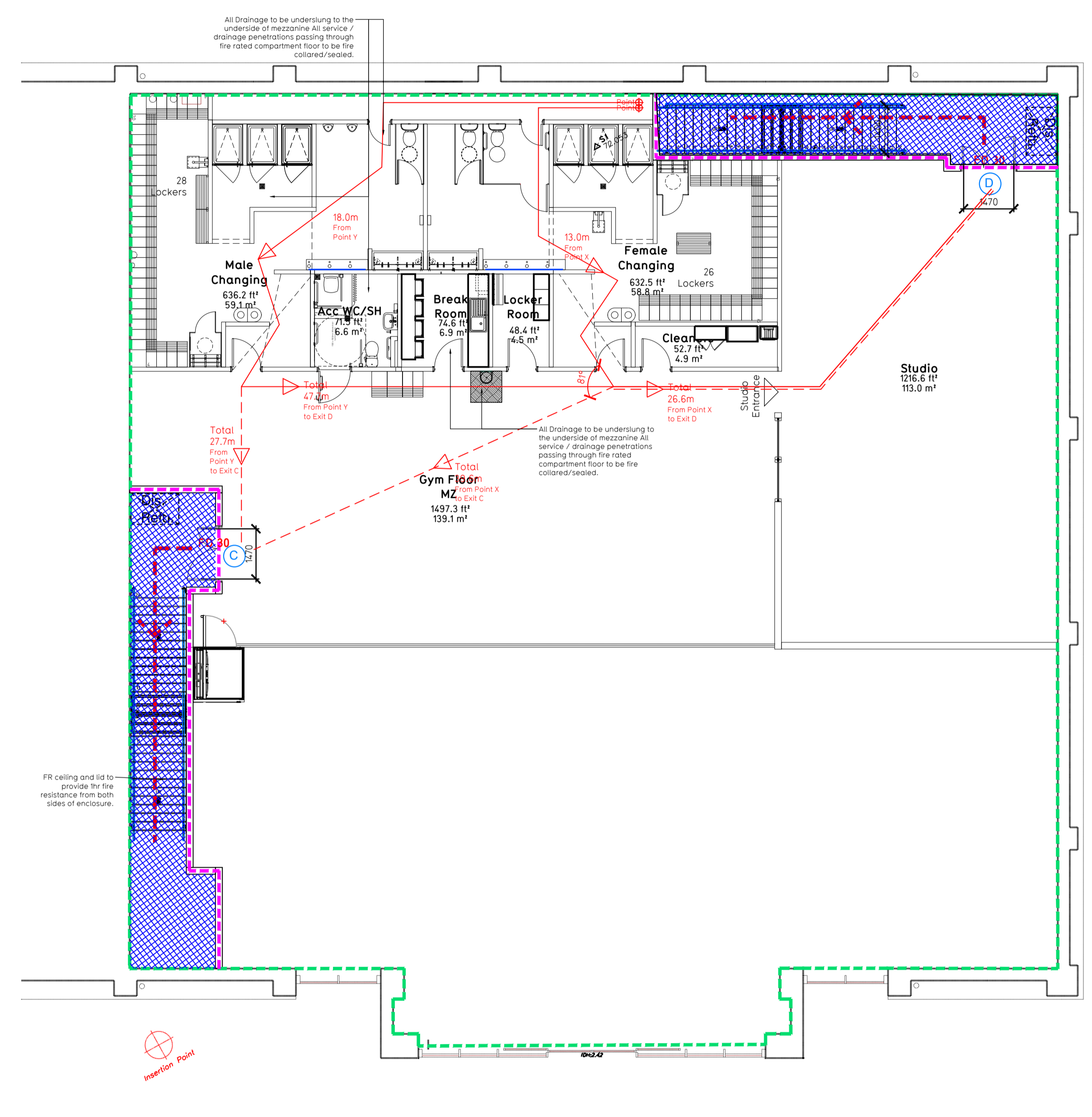


NOTE:

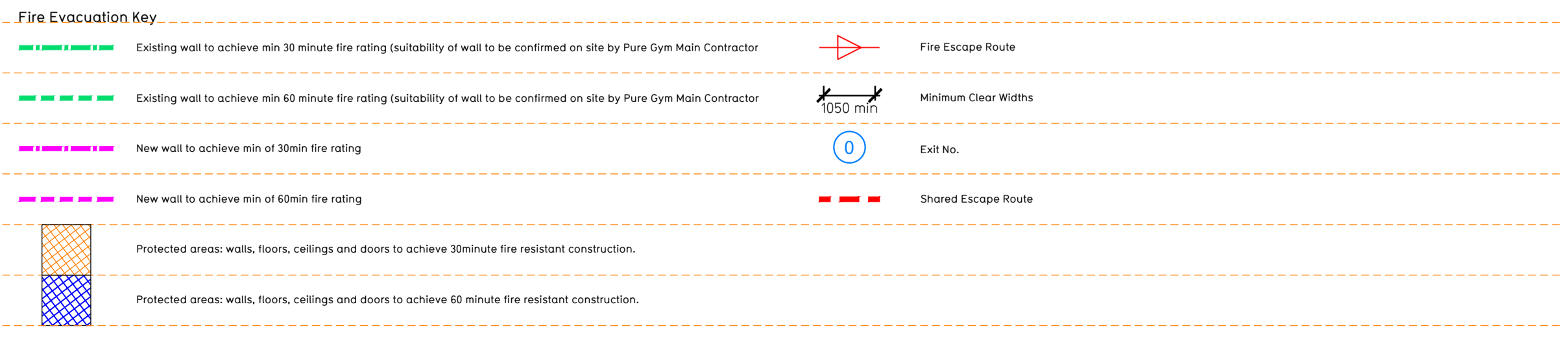
- Proposals must comply with all acoustic, fire & building regulation requirements
- No dimensions are to be scaled from this drawing. The contractor is responsible for checking all dimensions on site



Proposed Ground Floor Plan



Proposed Mezzanine Floor Plan



Escape Route Widths:
 In line with Sections 3.21 & 3.22 of 'Approved Document Part B, Volume 2 - buildings other than dwellings' - the adjacent calculations provide justification for the clear opening widths for escape from each floor level/ room in accordance with Table 4 & Appendix C.

Ground Floor
 Final Exit A Clear Opening Width = 1060mm (limited at Exit A, allows 222 persons to escape)
 Final Exit 3 Clear Opening Width = 2035mm (allows 477 persons to escape, largest exit discounted)
 (largest opening to be discounted)
 Total Aggregate Width for Floor (Less Largest Opening Width of 2035mm from FINAL EXIT 2) = 1060mm

Mezzanine Floor
 Final Exit 2 Fed by Storey Exit C Clear Opening Width = 1470mm (allows 304 persons to escape)
 Final Exit 4 Fed by Storey Exit D Clear Opening Width = 1470mm (limited by stairs, allows 280 persons to escape)
 (largest opening to be discounted)
 Total Aggregate Width for Floor (Less Largest Opening Width of 1470mm from STOREY EXIT C) = 1470mm

Total
 Ground Floor = 222 persons to escape
 Mezzanine Floor = 300 persons to escape
 Total = 502 persons to escape

Based on a NIA of 10339sqft, the Puregym peak Occupancy Target = 273 Persons
 Calculated using Puregym Fire Safety Occupancy Levels Forecast Tool.

The designed occupancy of the unit as calculated would allow a max. No. of 502 persons to escape, which is larger than the total estimated occupancy capacity of 273 persons and is therefore thought to meet with the Approved Document Part B. To allow free movement between the floors the occupancy has not been split 50/50% but rather allows for occupancy based on gym stations and functions assuming that a high percentage of the total occupancy could be on a single floor at one time.

Fire Alarm
 Fire Alarm designed and installed to BS 5839. Smoke & heat detection / emergency lighting by specialist. Please refer to MSE engineer's drawings / specifications.

Escape Lighting
 Emergency escape lighting designed and installed in accordance with BS 5266: Part 1. Please refer to MSE Engineer's drawings for final layout and specification.
 Escape Signage and emergency lighting is CDP under the MSE specification. Details of contractors proposals to be provided to Building Control Approved Inspector and Fire Officer within the Contractors Proposals Package, Clause 14

| Rev | Date | Description | Drawn/Checked |
|-------------------------------------------|----------|----------------------------------|---------------|
| | | | |
| PROJECT TITLE | | DRAWING TITLE | |
| Caerphilly Gallagher Retail Park | | Fire Evacuation Plan | |
| Unit 11, Caerphilly, South Wales CF83 3GX | | Ground and Mezzanine Floor Plans | |
| DRAWING CODE | DATE | SCALE | NO. SHEETS |
| MJI/CS | 14.07.22 | 1:100 @ A1 | 2040 |
| DRAWING PURPOSE | DATE | SCALE | NO. SHEETS |
| CONSTRUCTION | | | 003-FEP |
| Rev | | | COO |

Pure Gym Ltd
 Town Centre House
 The Merrion Centre
 Leeds
 LS2 8LY
 e: architecture@puregym.com
 t: 0113 285 8787
 w: www.puregym.com