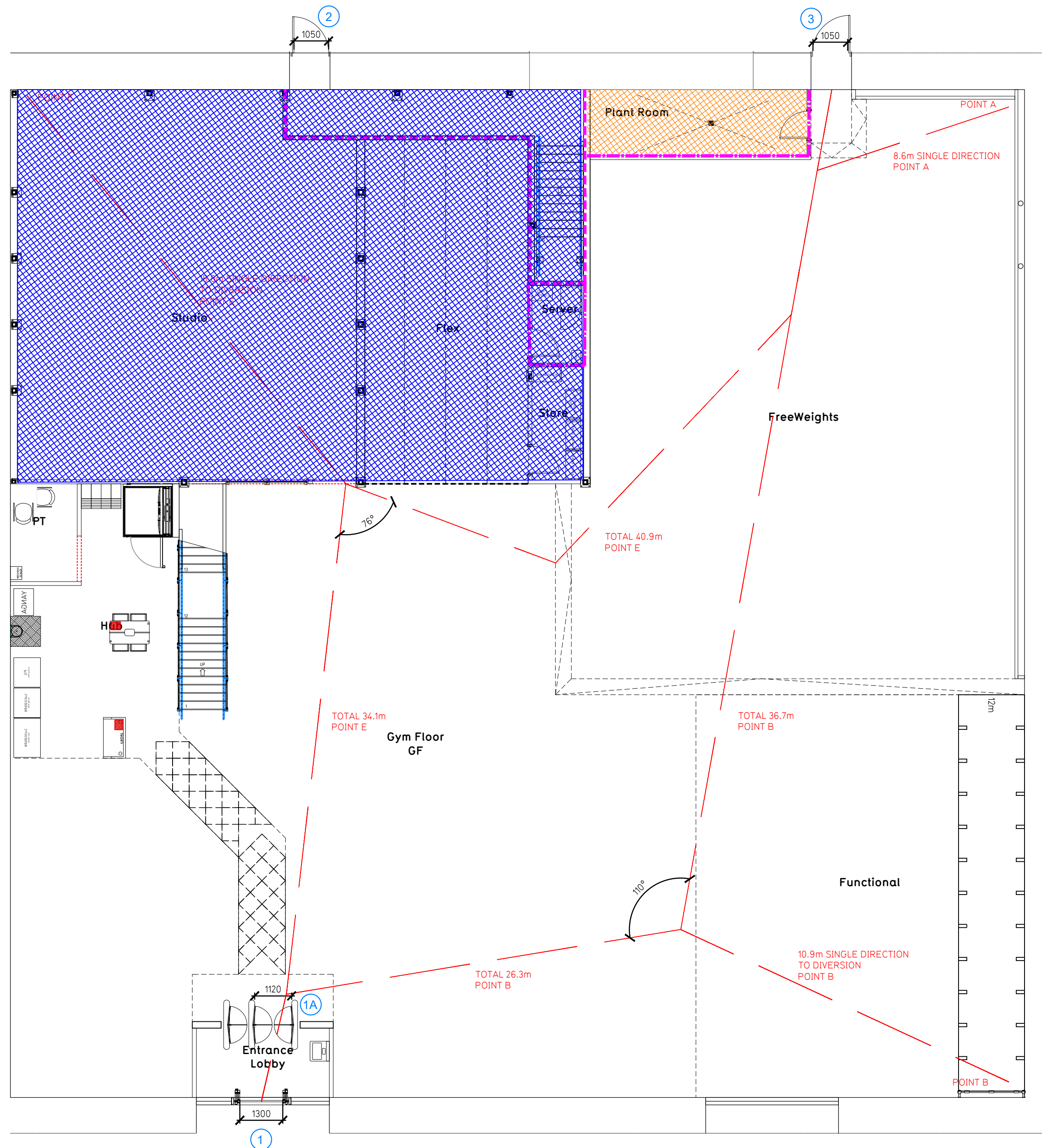
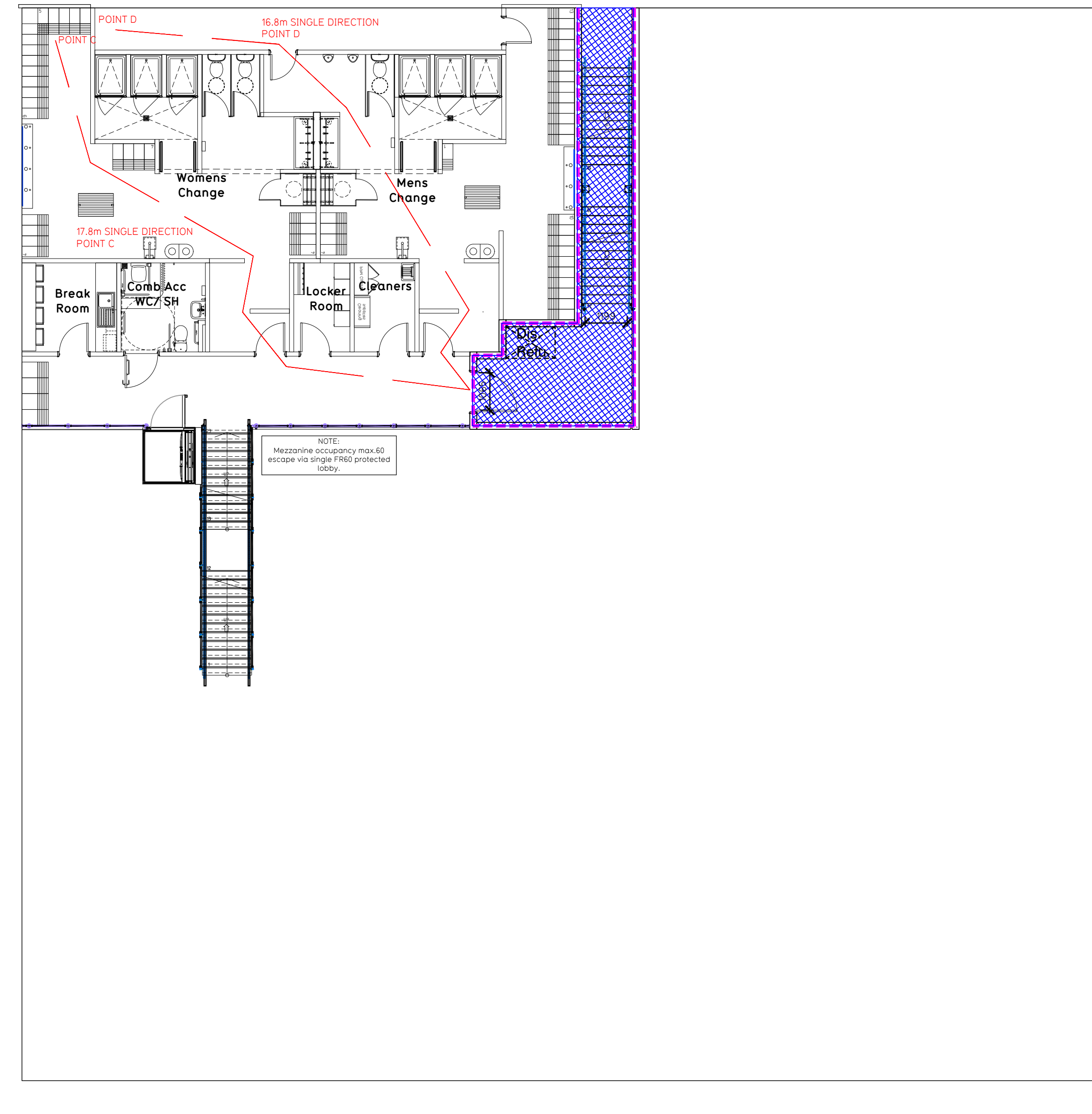


- NOTE:
- Proposals must comply with all acoustic, fire & building regulation requirements
 - No dimensions are to be scaled from this drawing. The contractor is responsible for checking all dimensions on site

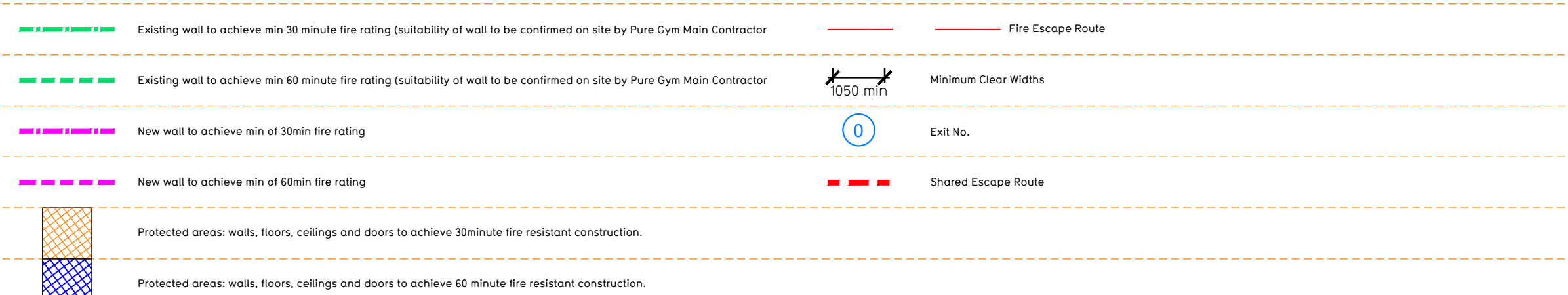


Proposed Ground Floor Plan



Proposed Mezzanine Floor Plan

Fire Evacuation Key



Escape Route Widths:
 In line with Sections 3.21 & 3.22 of 'Approved Document Part B, Volume 2 - buildings other than dwellings' - the adjacent calculations provide justification for the clear opening widths for escape from each floor level/ room in accordance with Table 4.4 & Appendix C.

Ground Floor
 Exit 1's restricted by Exit 1A Clear Opening Width = 1193mm (allows 249 persons to escape, largest opening to be discounted)
 Exit 3 Clear Opening Width = 1050mm (allows 220 persons to escape)
 Total Aggregate Width for Floor (Less Largest Opening Width of 1193mm from Exit 1) = 1050mm
 Ground Floor Total Estimated Occupancy Capacity = 220 Persons

Mezzanine Floor
 Exit 2 Clear Opening Width = 1050mm (allows 220 persons to escape)
 Maximum Occupancy of the Mezzanine floor is limited to 60 persons due to the single means of escape.

Total
 Ground Floor = 220 persons to escape
 Mezzanine Floor = 60 persons to escape
TOTAL = 280 persons

The total Maximum Occupancy is 228 persons, which is larger than the total estimated occupancy capacity of 193 persons and is therefore thought to meet with the Approved Document Part B.

Sprinklers
 System design and installed in compliance with BS EN 12845:2015 & LPC Technical Bulletins

Fire Alarm
 Fire Alarm designed and installed to BS 5839. Smoke & heat detection / emergency lighting by specialist. Please refer to M&E engineer's drawings / specifications.

Escape Lighting
 Emergency escape lighting designed and installed in accordance with BS 5266: Part 1. Please refer to M&E Engineer's drawings for final layout and specification.

Smoke Extract
 Smoke Extract System to be designed and installed in accordance with BS 7346: Part 8. Please refer to M&E Engineer's drawings for final layout and specification.

Escape Signage and emergency lighting is CIP under the M&E specification. Details of contractors proposals to be provided to Building Control Approved Inspector and Fire Officer within the Contractors Proposals Package, Clause 1.4

Rev	Date	Description	Drawn/ Checked
PROJECT TITLE			
BLYTH		Fire Evacuation Plan	
Units 4-5, Blyth Valley Retail Park, NE24 5TP		Ground and Mezzanine Floor Plans	
DESIGNED / CHECKED BY	DATE	SCALE	DRAWING NO.
SK/KL	13.09.22	1:100 @ A1	2135
DRAWING PURPOSE			003-FEP
CONSTRUCTION			T00
PUREGYM		Pure Gym Ltd Town Centre House The Meriton Centre Leeds LS2 9LY e: architecture@puregym.com t: 0113 285 6787 w: www.puregym.com	