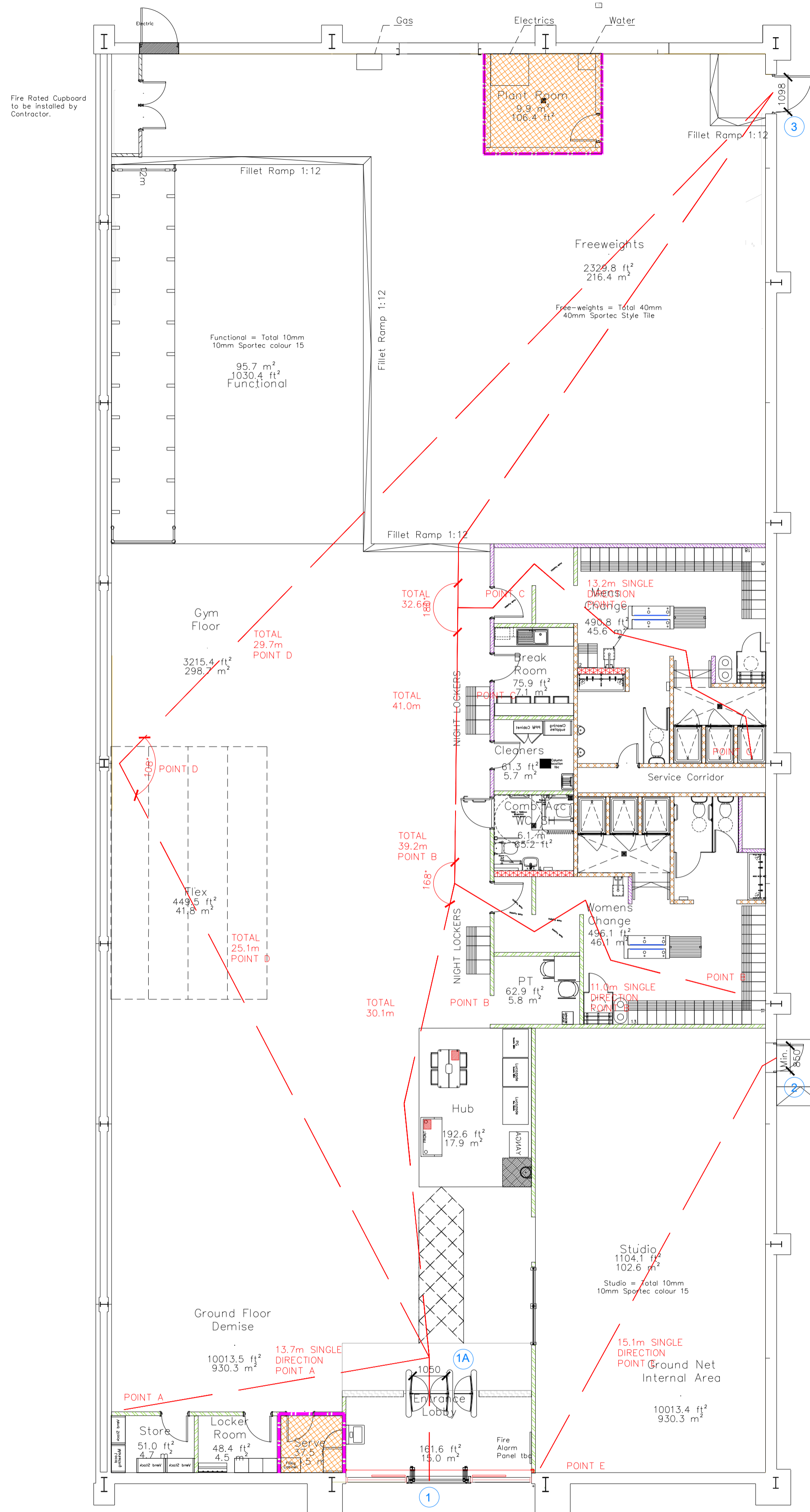
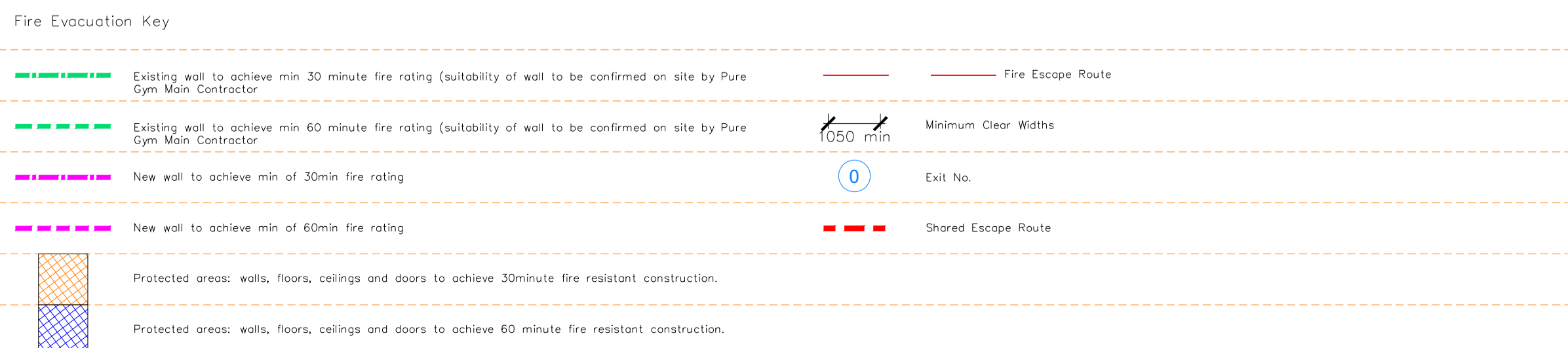


NOTE:

- Proposals must comply with all acoustic, fire & building regulation requirements
- No dimensions are to be scaled from this drawing. The contractor is responsible for checking all dimensions on site



Ground Floor Plan - Scale 1:100



Escape Route Widths:
In line with Sections 3.21 & 3.22 of 'Approved Document Part B, Volume 2 - buildings other than dwellings' - the adjacent calculations provide justification for the clear opening widths for escape from each floor level/ room in accordance with Table 4 & Appendix C.

Ground Floor

Final Exit 1 is limited by intermediate Exit 1A Clear Opening Width = 1050mm (allows 220 persons to escape, largest opening to be discarded)
Final Exit 2 is to be a newly formed Fire Exit of Minimum Clear Opening Width = 850mm (allows 110 persons to escape)
Final Exit 3 Clear Opening Width - 1098mm (allows 229 persons to escape)

Total Aggregate Width for Floor (Less Largest Opening Width of 1050mm from EXIT No. 1) = 1948mm
Ground Floor Total Estimated Occupancy Capacity = 339 Persons

Final Exit Nos. 2 & 3 provides a min. width of 1948mm and would allow a max. No. of 339 persons to escape, which is larger than the total estimated maximum peak occupancy capacity of 255 Persons and is therefore thought to meet with the Approved Document Part B.

Sprinklers
System design and installed in compliance with BS EN 12845:2015 & LPC Technical Bulletins

Fire Alarm
Fire Alarm designed and installed to BS 5839. Smoke & heat detection / emergency lighting by specialist. Please refer to M&E engineer's drawings / specifications.

Escape Lighting
Emergency escape lighting designed and installed in accordance with BS 5266: Part 1. Please refer to M&E Engineer's drawings for final layout and specification.

Escape Signage
Escape Signage and emergency lighting is CDP under the M&E specification. Details of contractors proposals to be provided to Building Control Approved Inspector and Fire Officer within the Contractors Proposals Package, Clause 1.4

Rev	Date	Description	Drawn/Checked
001	11.10.22	Issue for Construction	

PROJECT TITLE		DRAWING TITLE	
Great Yarmouth Retail Park		Fire Evacuation Plan	
Unit 5, Pasture Retail Park, Thamestead Way, Great Yarmouth NR01 1DH		Ground Floor	
DRAWING NUMBER	DATE	SCALE	ISSUE No.
MJI/TBC	11.10.22	1:100 @ A1	2149
DRAWING PURPOSE	SCALE	ISSUE No.	DRAWING No.
CONSTRUCTION		003-FEP	
			Rev
			C00

Pure Gym Ltd
Town Centre House
The Meriton Centre
Leeds
LS2 9LY

e: architecture@puregym.com
t: 0113 285 8787
w: www.puregym.com