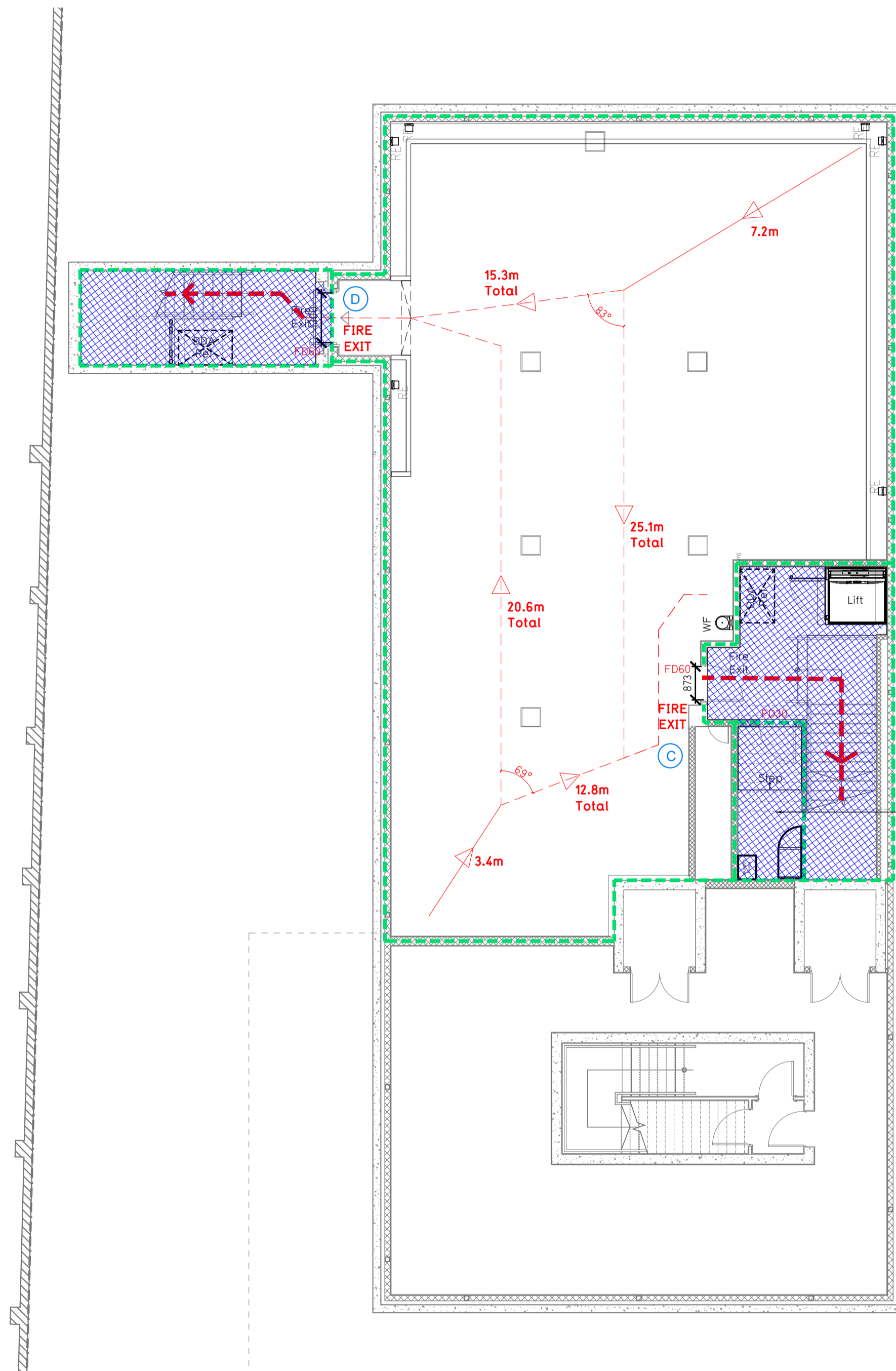
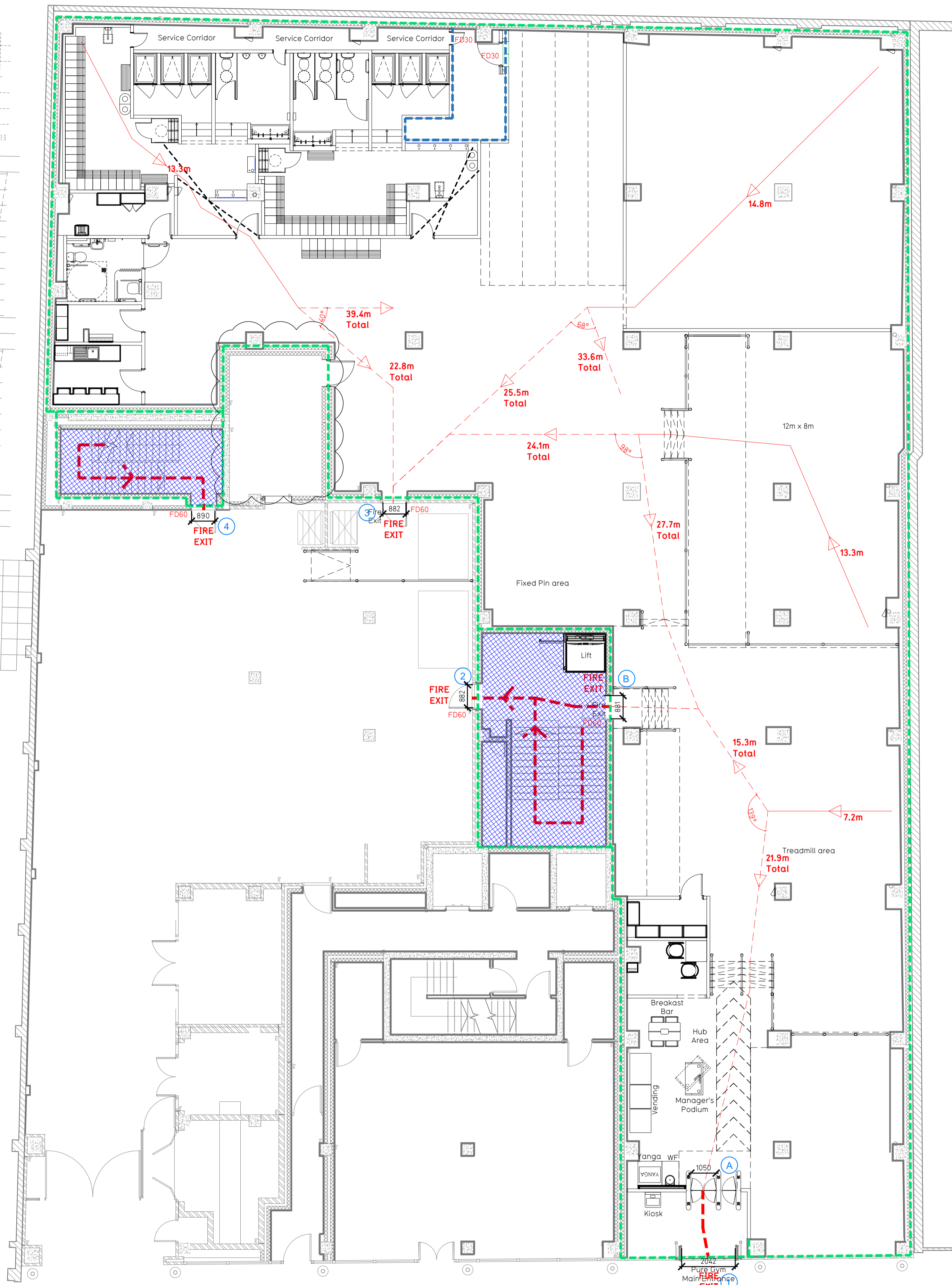


General Notes

- Proposals must comply with all acoustic, Fire, Building Regulation requirements.
- No dimensions are to be scaled from this drawing.
- The contractor is responsible for checking all dimensions on site.



Escape Route Widths:

In line with Sections 3.21 & 3.22 of 'Approved Document Part B, Volume 2 - buildings other than dwelling houses' - the adjacent calculations provide justification for the clear opening widths for escape from each floor level/ room in accordance with Table 4 & Appendix C.

Ground Floor

Final Exit 1 (2042mm) is limited by Intermediate Exit A Clear Opening Width = 1050mm (allows 220 persons to escape, largest opening to be discounted).
 Final Exit 2 (882mm) is limited by Intermediate Exit B Clear Opening Width = 881mm (allows 110 persons to escape). (Merging flows to be discussed with Approved Inspector).
 Final Exit 3 Clear Opening Width = 882mm (allows 110 persons to escape).

Ground Floor Total Estimated Occupancy Capacity = 220 Persons

Basement Floor

Final Exit 4 (890mm) (allows 110 persons to escape, largest opening to be discounted).
 Final Exit 2 (873mm) is limited by Intermediate Exit C Clear Opening Width = 873mm (allows 110 persons to escape) (Merging flows to be discussed with

Sprinklers

System design and installed in compliance with BS EN 12845:2015 & LPC Technical Bulletins

Fire Alarm

Fire Alarm designed and installed to BS 5839. Smoke & heat detection / emergency lighting by specialist. Please refer to M&E engineer's drawings / specifications.

Escape Lighting

Emergency escape lighting designed and installed in accordance with BS 5266: Part 1. Please refer to M&E Engineer's drawings for final layout and specification.

Smoke Extract

Smoke Extract System to be designed and installed in accordance with BS 7346: Part 8. Please refer to M&E Engineer's drawings for final layout and specification.

Rev: 01 14.06.22 Updated to reflect increased size Plant Room. CV/PG

Rev: 02 22.03.22 RSP/IV

Rev	Date	Description	Drawn/Checked
01	14.06.22	Updated to reflect increased size Plant Room.	CV/PG
02	22.03.22	RSP/IV	

CONSTRUCTION C01

Crouch End		Fire Evacuation Plan	
163 Tottenham Lane, Haringey, London, N8 9BT		Basement & Ground Floor Plans	
DATE	SCALE	JOB No.	DRAWING No.
22.03.22	1:100 @ A1	0340	003-FEP
PUREGYM		PUREGYM Ltd Town Centre House The Merrion Centre Leeds LS2 8LY e: architecture@puregym.com t: 0113 265 8737 w: www.puregym.com	