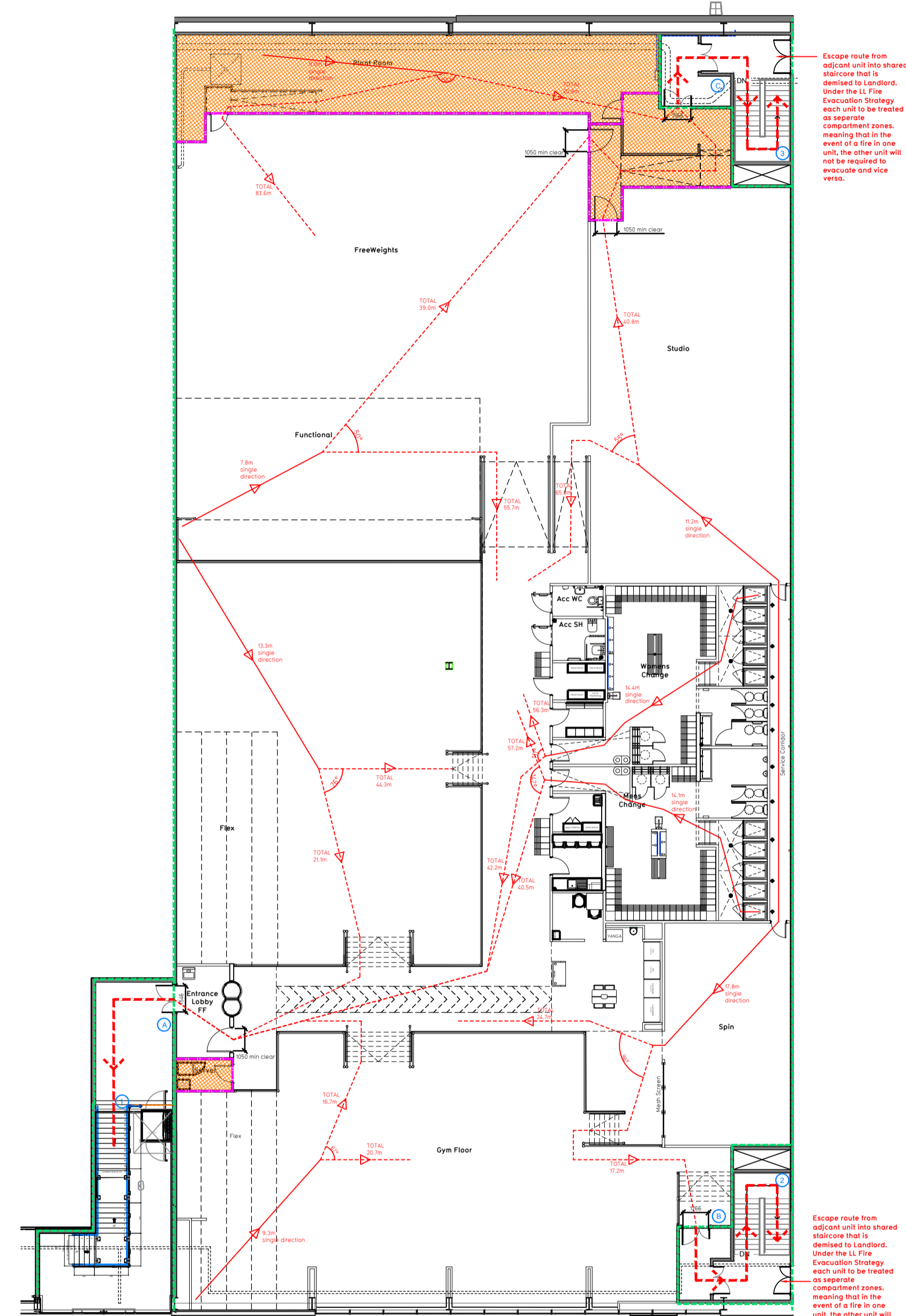


NOTE:

- Proposals must comply with all acoustic, fire & building regulation requirements
- No dimensions are to be scaled from this drawing. The contractor is responsible for checking all dimensions on site

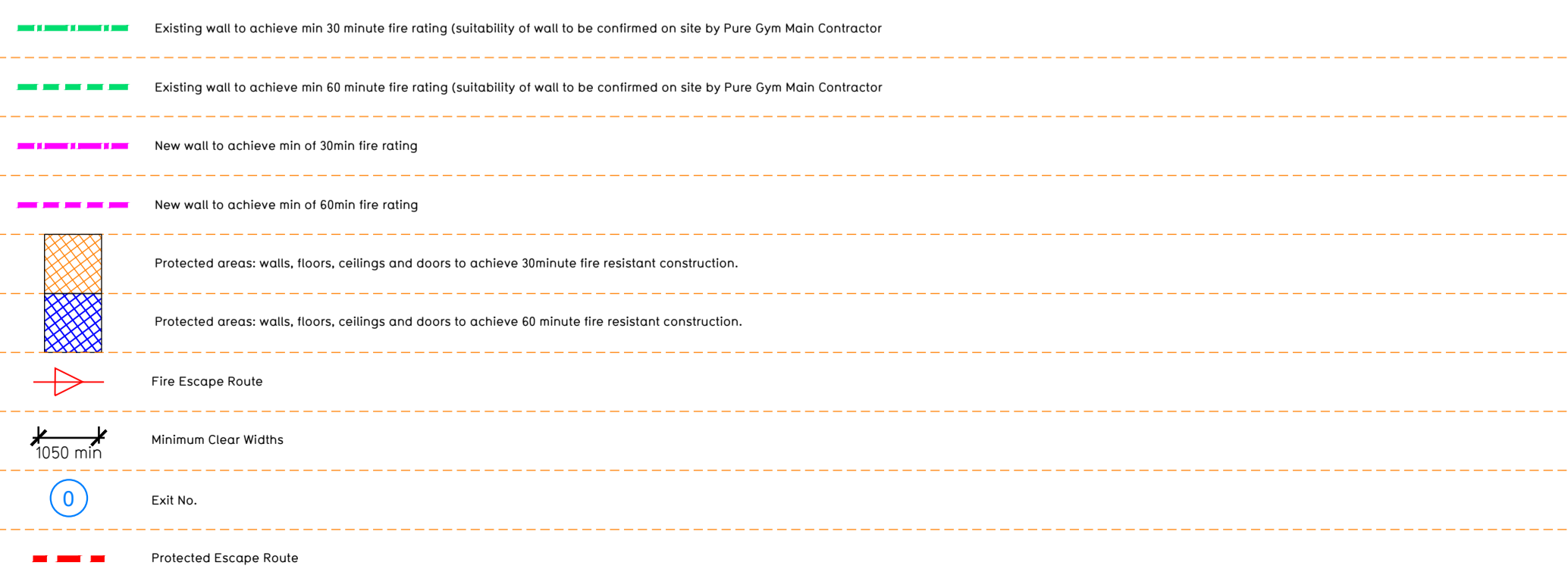


Proposed Ground Floor Plan



Proposed First Floor Plan

Fire Evacuation Key



**Unit Occupancy:**  
 In line with the LL's existing Fire Strategy the forecasted Design Occupancy for the unit is 460 persons based upon a Floor Space Factor of 4m<sup>2</sup>/person and total floor area of 1842m<sup>2</sup> as permitted under BS9999. However, based upon PG's own empirical data for a gym of this size and nature, the forecasted peak occupancy would be 351 occupants.

**Escape Route Requirements:**  
 In line with the LL's existing Fire Strategy PG escape route requirements have been calculated in accordance with BS9999. BS9999 recognises the impact that an automated fire detection has on the evacuation of the building as it permits a 15% enhancement on the minimum requirements. Consequently the travel distances, horizontal and vertical escape requirements have been calculated in accordance with the above enhancement. In line with the LL's existing Fire Strategy the unit has been designated as having a Risk Profile of B3 relating to Occupancy Characteristics and Fire Growth Rate.

This results in the following limitations:  
 Single direction horizontal travel distance - 18.4m  
 Alternative direction horizontal travel distance - 45m  
 Door & corridor widths factor - 5.3mm/person  
 Stair widths factor - 5.95mm/persons

**Horizontal Means of Escape**  
 Exit A Clear Opening Width = 1500mm (allows 283 persons to escape based upon a door width of 5.3mm per person)  
 Exit B Clear Opening Width = 1200mm (allows 231 persons to escape based upon a door width of 5.3mm per person)  
 Exit C Clear Opening Width = 1500mm (allows 283 persons to escape based upon a door width of 5.3mm per person) (largest opening to be discounted)

This results in a total horizontal escape capacity following discounting of Exit C (Less Largest Opening Width of 1500mm) = 515 persons

**Vertical Means of Escape**  
 Staircase 1 Clear Width = 1800mm (Allows 302 persons to escape) (largest opening to be discounted)  
 Staircase 2 Clear Width = 1200mm (Allows 20 persons to escape)  
 Staircase 3 Clear Width = 1260mm (Allows 20 persons to escape)

Taking into account that only staircase 2 and 3 have lobby protection, Staircase 1 is to be discounted from the vertical escape capacity. Consequently the total vertical escape capacity is limited 433 persons.

The final exit width from each stair is to be the same width as the stair that it serves therefore meaning that the staircase width is the limiting factor with regards to vertical circulation.

Under the LL Fire Evacuation Strategy each unit is to be treated as a separate compartment zones. This meaning that in the event of a fire in one unit, the other unit will not be required to evacuate and vice versa. Consequently, the fact that Staircase 2 and 3 are shared with the adjacent unit/tenant can be discounted as a consideration.

**Limiting Factor on Unit Occupancy**  
 Taking into account the forecasted Design Occupancy, Horizontal and Vertical Means of Escape the limiting factor on the units occupancy numbers in relation to the providing adequate means of escape in the event of a fire, is the Vertical Means of Escape. Consequently, the overall unit occupancy number is limited to 433 persons. Taking into account PG's own empirical data, this limitation of 433 persons is more than sufficient for the 351 occupants forecasted for a gym of this size and nature. This is therefore thought to meet the requirements set out within BS9999 and comply with Building Regulations.

**Evacuation of Disabled Occupants**  
 Disabled refuge points are to be located within all three protected cores. These will measure 1400mm x 900mm and will be located so as to not obstruct escape routes and clear exit widths. A two way Emergency Voice Communication (EVC) system will be installed to comply with BS 5839-9. A master panel should be located in close proximity to the units main fire alarm panel.

**Fire Alarm**  
 Fire Alarm designed and installed to BS 5839. Smoke & heat detection / emergency lighting by specialist. Please refer to M&E engineer's drawings / specifications.

**Escape Lighting**  
 Emergency escape lighted designed and installed in accordance with BS 5266: Part 1. Please refer to M&E Engineer's drawings for final layout and specification. Escape Signage and emergency lighting is CDP under the M&E specification. Details of contractors proposals to be provided to Building Control Approved Inspector and Fire Officer within the Contractors Proposals Package, Clause 1.4

Rev	Date	Description	Drawn/Checked
C02	11.04.22	Drawing updated to reflect General Arrangement Plan Rev C02	IR/PG
C01	23.03.22	Additional door in Freeweights for plant room escape.	HI/IR
PROJECT TITLE: Manchester Cheetham Hill Cheetham Hill Retail Park, Manchester, M8 8BB			
DRAWING NO: 002-FEP		DRAWING TITLE: Fire Escape Plan Ground & First Floor	
HI / IR	08.03.22	SCALE: 1:200 @ A1	1132
DRAWING PURPOSE: CONSTRUCTION			Rev
			C02
			Pure Gym Ltd Town Centre House The Meriton Centre Leeds LS2 8LY e: architecture@puregym.com t: 0113 285 8787 w: www.puregym.com