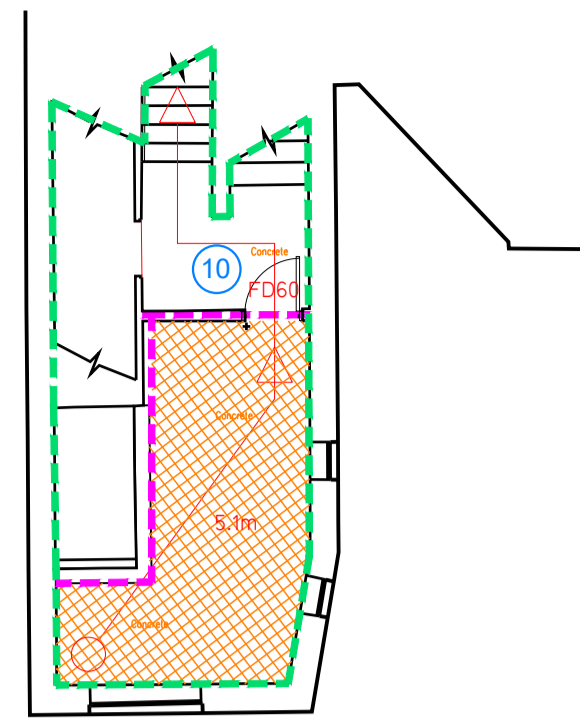
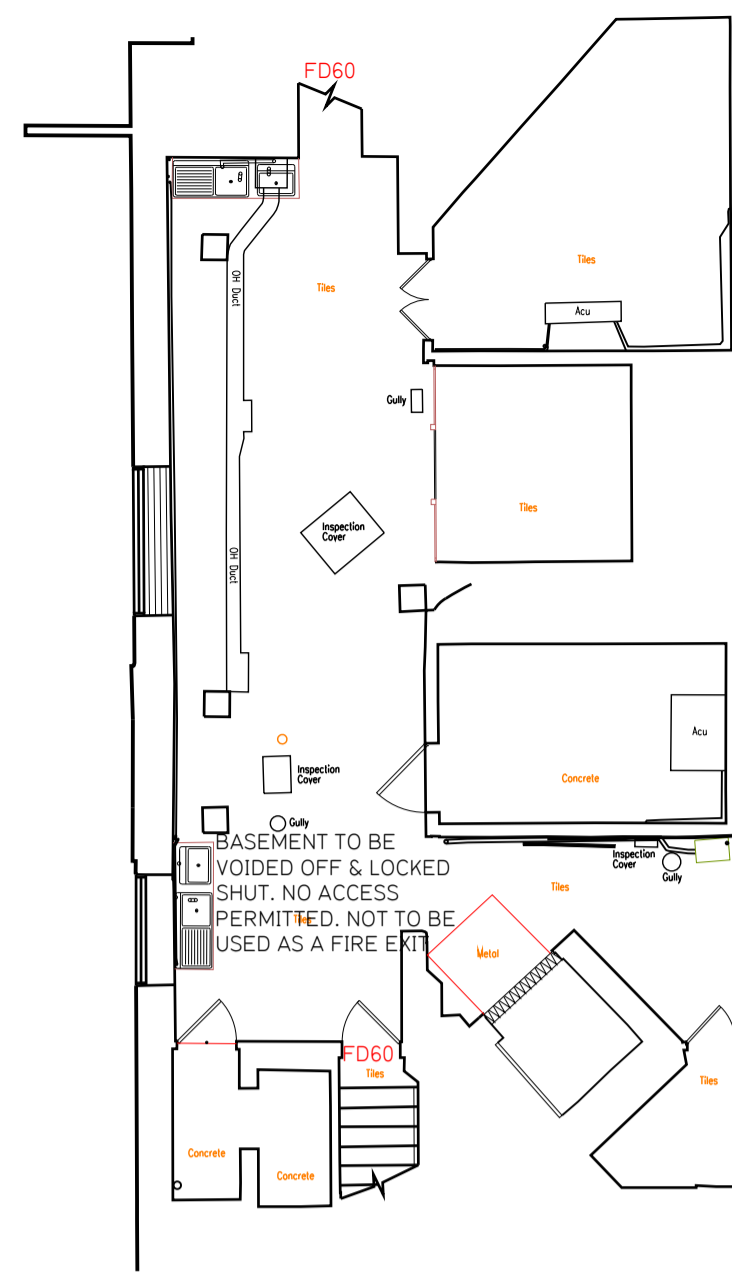


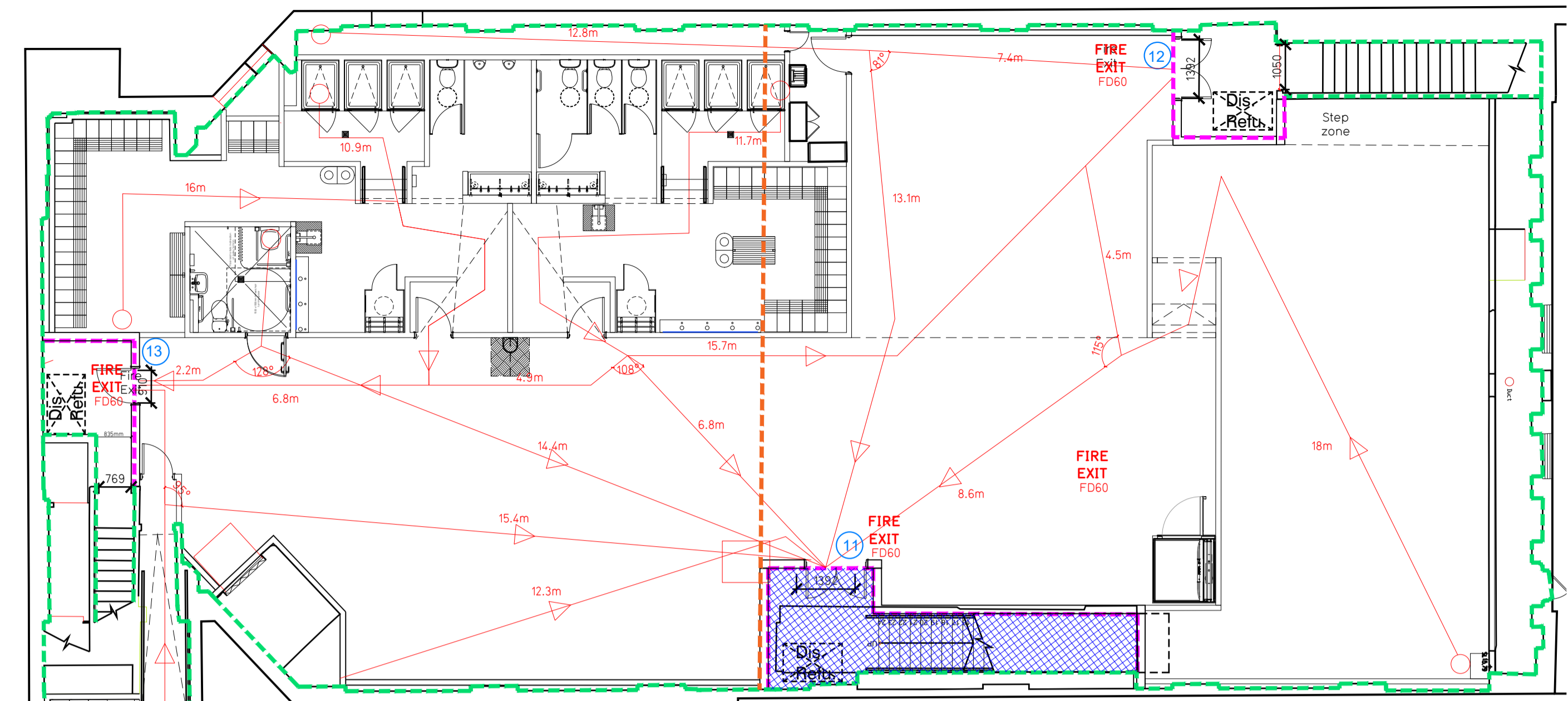
Proposed Mezzanine Floor Plan
Scale 1:100



Proposed Basement Floor Plan
Scale 1:100



Proposed First Floor Plan
Scale 1:100

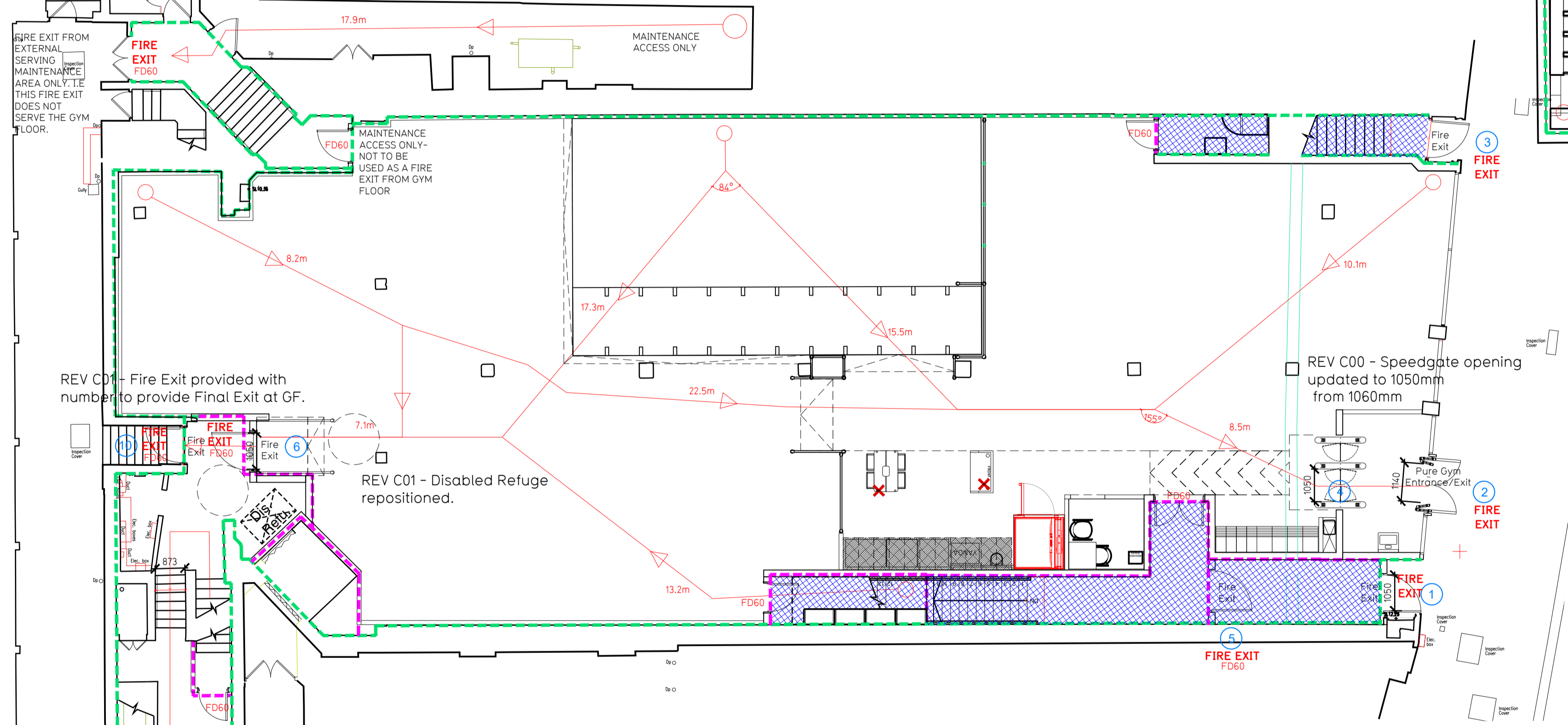


REV C00 - Specification provided for Fire barrier system within ceiling/ roof void.

NOTE:

- Proposals must comply with all Acoustic, Fire, Building Regulation requirements.
- No dimensions are to be scaled from this drawing.
- The Contractor is responsible for checking all dimensions on site.

Proposed Ground Floor Plan - Scale 1:100



REV C02 - Updated to show paint demarcation required for 1no. car parking space and painted hatched area indicating safe route to the Final Fire Exit Gate.

REV C00 - Specification provided for Fire barrier system within ceiling/ roof void.

REV C00 - Mezzanine occupancy figures had not been shown previously.

Fire Evacuation Key

	Existing wall to achieve min 30 minute fire rating (suitability of wall to be confirmed on site by Pure Gym Main Contractor)		Protected areas: walls, floors, ceilings and doors to achieve 30minute fire resistant construction.
	Existing wall to achieve min 60 minute fire rating (suitability of wall to be confirmed on site by Pure Gym Main Contractor)		Protected areas: walls, floors, ceilings and doors to achieve 60 minute fire resistant construction.
	New wall to achieve min of 30min fire rating		Fire Escape Route
	New wall to achieve min of 60min fire rating		Minimum Clear Widths
	30 min Fire barrier system by Rockwool, located above ceiling level, (Min 30 min Integrity and 15 min Insulation required).		Final Exit No.
			Shared Escape Route

Escape Route Widths:
In line with Sections 3.21 & 3.22 of 'Approved Document Part B, Volume 2 - buildings other than dwellings' - the adjacent calculations provide justification for the clear opening widths for escape from each floor level/ room in accordance with Table 4 & Appendix C.

Ground Floor
Final Fire Exit 2 @ GF = 140mm (allows 230 persons to escape) but is limited by Intermediate Fire Exit 4 - 1050mm (allows 220 persons to escape).
Final Fire Exit 10 @ GF = 950mm (allows 90 persons to escape). Final Fire Exit 8, externally merges with Final Fire Exit Gate 9 = 1400mm (allows 290 persons to escape). (Appropriate push to release gate mechanism to be provided).
Estimated IF Fire Occupancy = 203 Persons

Mezzanine Floor
This floor will house the PureGym plant room with a likely occupancy of 2-3 persons at any one time.

First Floor
Intermediate Fire Exit 11 @ 1F = 192mm (allows 288 persons to escape) (Largest opening to be discounted) is limited by Intermediate Fire Exit 5 (1050mm) & Final Fire Exit 1 @ GF = 1050mm (allows 220 persons to escape).
Intermediate Fire Exit 13 @ 1F = 910mm (allows 170 persons to escape) (narrowest width along this route is 763mm (allows 60 persons to escape). Final Fire Exit 6 is 1070mm to allow for merging flow from Intermediate Fire Exit 6 @ GF.
Estimated IF Fire Occupancy = 280 Persons

Basement Floor
This floor is to be voided off and kept locked shut without access. Therefore there are no Fire escape routes going through this area.

Total Ground = 220 persons to escape
Mezzanine = 3 persons to escape
First = 280 persons to escape
Total = 503 persons to escape
Based on a NIA of 10549sqft, the Puregym Peak Peak Occupancy Target = 261 Persons
Calculated using Puregym Fire Safety Occupancy Levels Forecast Tool.
The designed occupancy of the unit as calculated below would allow a max. No. of 500 persons to escape, which is larger than the total estimated occupancy capacity of 261 Persons and is therefore thought to meet with the Approved Document Part B. To allow free movement between the floors the occupancy has not been split 50/50% but rather allow for occupancy based on gym stations and functions assuming that a high percentage of the total occupancy could be on a single floor at any one time.

Fire Alarm
Fire Alarm designed and installed to BS 5839. Smoke & heat detection / emergency lighting by specialist. Please refer to MSE engineer's drawings / specifications.

Escape Lighting
Emergency escape lighting designed and installed in accordance with BS 5266: Part 1. Please refer to MSE Engineer's drawings for final layout and specification.

Escape Signage and emergency lighting is COP under the MSE specification. Details of contractors proposals to be provided to Building Control Approved Inspector and Fire Officer within the Contractors Proposals Package, Clause 14

Rev	Date	Description	Drawn/Checked
C02	11.04.22	Updates indicated with orange revision clouds to show car parking space & safe route required.	RSP/CV
C01	22.03.22	Updated annotations shown by red revision clouds.	RSP/CV
PROJECT TITLE			
Streatham		Fire Evacuation Plan	
130-132 Streatham High Road, London, SW16 1BW		Basement, Ground, First & Mezzanine Floor Plans	
DRAWING NO.	DATE	SCALE	DRAWING No.
RSP/CV	15.03.22	1:100 @ A1	2078
DRAWING PURPOSE	SCALE	NO.	REV
CONSTRUCTION		003-FEP	C02

Pure Gym Ltd
Town Centre House
The Merrion Centre
Leeds
LS2 8LY
e: architecture@puregym.com
t: 0113 285 8787
w: www.puregym.com