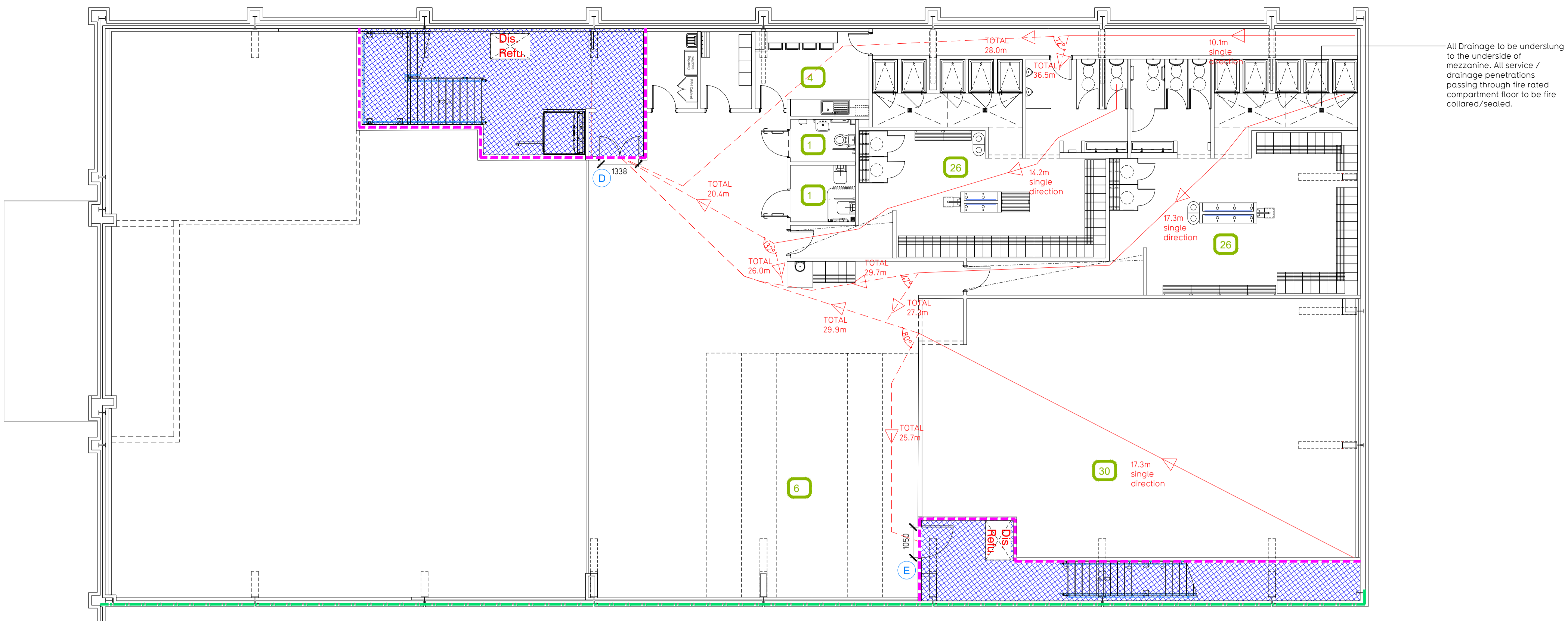


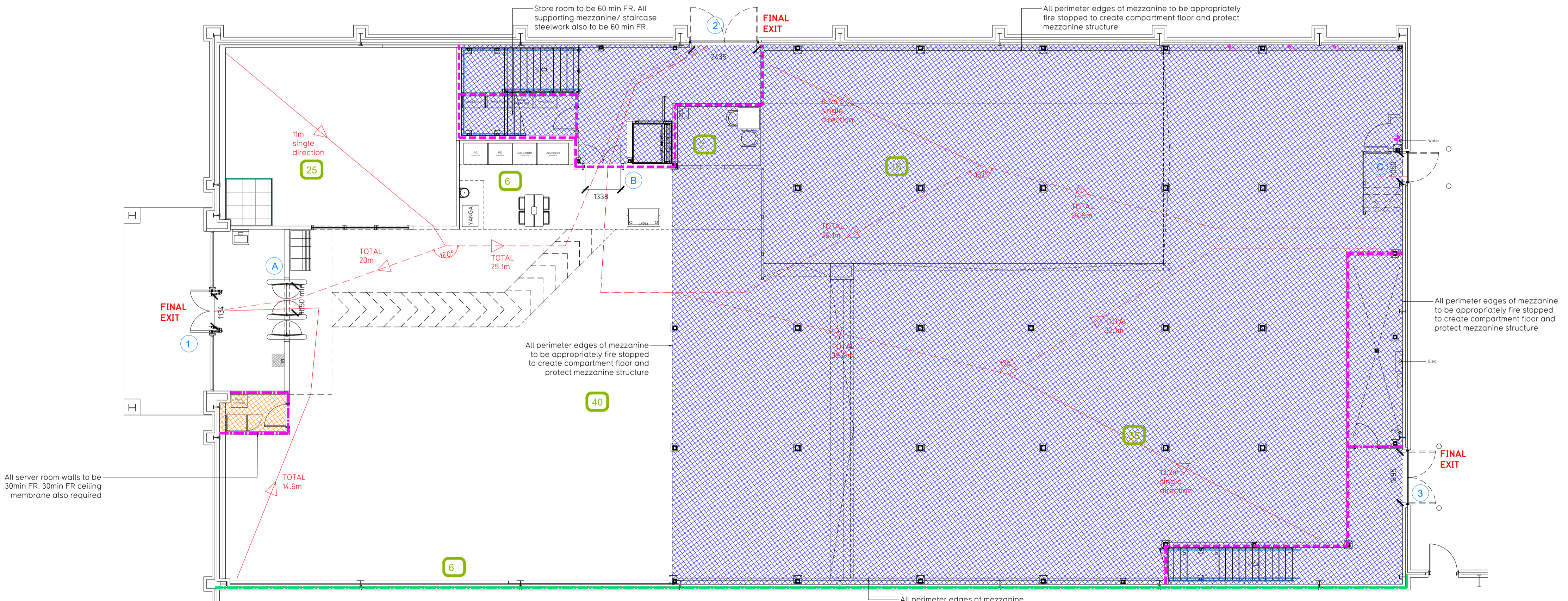
NOTE:

- Proposals must comply with all acoustic, fire & building regulation requirements
- No dimensions are to be scaled from this drawing. The contractor is responsible for checking all dimensions on site



All Drainage to be underslung to the underside of mezzanine. All service / drainage penetrations passing through fire rated compartment floor to be fire collared/sealed.

Proposed Mezzanine Plan



All server room walls to be 30min FR. 30min FR ceiling membrane also required

Proposed Ground Plan

**Fire Evacuation Key**

	Existing wall to achieve min 30 minute fire rating (suitability of wall to be confirmed on site by Pure Gym Main Contractor)		Occupancy level within area
	Existing wall to achieve min 60 minute fire rating (suitability of wall to be confirmed on site by Pure Gym Main Contractor)		Fire Escape Route
	New wall to achieve min of 30min fire rating		Minimum Clear Widths
	New wall to achieve min of 60min fire rating		Exit No.
	Protected areas: walls, floors, ceilings and doors to achieve 30minute fire resistant construction.		Shared Escape Route
	Protected areas: walls, floors, ceilings and doors to achieve 60 minute fire resistant construction.		

**Escape Route Widths:**  
 In line with Sections 3.21 & 3.22 of 'Approved Document Part B, Volume 2 - buildings other than dwellings' - the adjacent calculations provide justification for the clear opening widths for escape from each floor level/ room in accordance with Table 4 & Appendix C.

**Ground Floor**  
 Storey Exit A Clear Opening Width = 1950mm (allows 220 persons to escape)  
 Storey Exit B Clear Opening Width = 1338mm (allows 277 persons to escape - largest opening to be discounted)  
 Final Exit C Clear Opening Width = 1050mm (allows 270 persons to escape)  
 Total Aggregate Width for Floor (Less Largest Opening Width of 1338mm from EXIT B) = 2500mm  
 Ground Floor Total Estimated Occupancy Capacity = 430 Persons

**EXIT A & C** provides a min. width of 700mm and would allow a max. No. of 440 persons to escape, which is larger than the total estimated occupancy capacity of 195 Persons and is therefore thought to meet with the Approved Document Part B.

**Mezzanine Floor**  
 Storey Exit D Clear Opening Width = 1338mm (allows 277 persons to escape - largest opening to be discounted)  
 Storey Exit E Clear Opening Width = 1550mm (allows 220 persons to escape)  
 Total Aggregate Width for Floor (Less Largest Opening Width of 1338mm from EXIT D) = 1950mm  
 Mezzanine Floor Total Estimated Occupancy Capacity = 44 Persons

**EXIT E** provides a min. width of 950mm and would allow a max. No. of 220 persons to escape, which is larger than the total estimated occupancy capacity of 94 Persons and is therefore thought to meet with the Approved Document Part B.

**Final Exits**  
 Exit 1 Clear Opening Width = 1134mm (escape occupancy limited by Storey Exit A = 220 persons)  
 Exit 2 Clear Opening Width = 250mm (determined by merge in flow calculation for escape from mezzanine and Storey Exit B)  
 Exit 3 Clear Opening Width = 1855mm (escape occupancy limited by Storey Exit E = 220 persons)

Exit 1 caters for ground floor only (via exit A) and allows the ground floor occupancy to escape and is thought to meet with the Approved Document Part B.  
 Exit 2 caters for the ground and mezzanine floor. Taking into account the merge in flow calculation of Approved Document Part B, a stair width of 100mm and a final exit width of 250mm means that Exit 2 is capable of accommodating the 277 persons from Storey Exit B and the additional 27 occupants escaping via Storey Exit D. Given the over provision of fire exits at Ground Floor this is therefore thought to meet with Approved Document Part B.  
 Exit 3 caters for Mezzanine floor only (via exit E) and allows the mezzanine floor occupancy to escape and is thought to meet with the Approved Document Part B.

**Fire Alarm**  
 Fire Alarm designed and installed to BS 5839. Smoke & heat detection / emergency lighting by specialist. Please refer to M&E engineer's drawings / specifications.

**Escape Lighting**  
 Emergency escape lighting designed and installed in accordance with BS 5266: Part 1. Please refer to M&E Engineer's drawings for final layout and specification.  
 Escape Signage and emergency lighting is COP under the M&E specification. Details of contractors proposals to be provided to Building Control Approved Inspector and Fire Officer within the Contractors Proposals Package, Clause 14.

C01   24.02.22   Layout updated to reflect latest GA C01		HI/R
Rev	Date	Description
Drawn/ Checked		
<b>PROJECT TITLE</b>		<b>DRAWING TITLE</b>
Macclesfield Unit B, Silk Retail Park, Hulley Rd		Fire Escape Plan Ground and Mezzanine Plan
<b>DRAWING CHECKED</b>	<b>DATE</b>	<b>SCALE</b>
HI/R	07.02.22	1:100 @ A1
<b>DRAWING PURPOSE</b>	<b>SCALE</b>	<b>DRAWING No</b>
CONSTRUCTION	2052	003 - FEP
		<b>Rev</b>
		C01
		Pure Gym Ltd Town Centre House The Merrion Centre Leeds LS2 8LY e: architecture@puregym.com t: 0113 285 8787 w: www.puregym.com