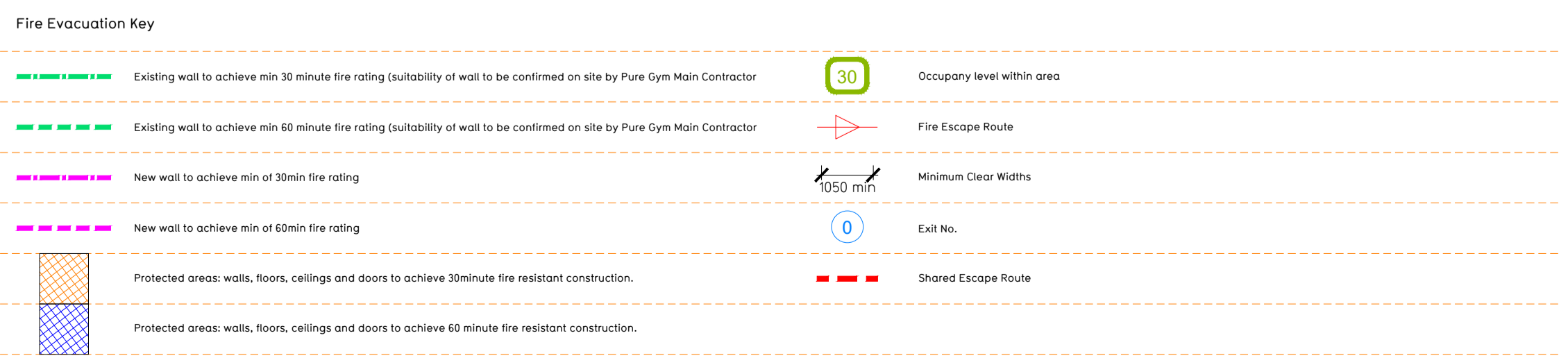
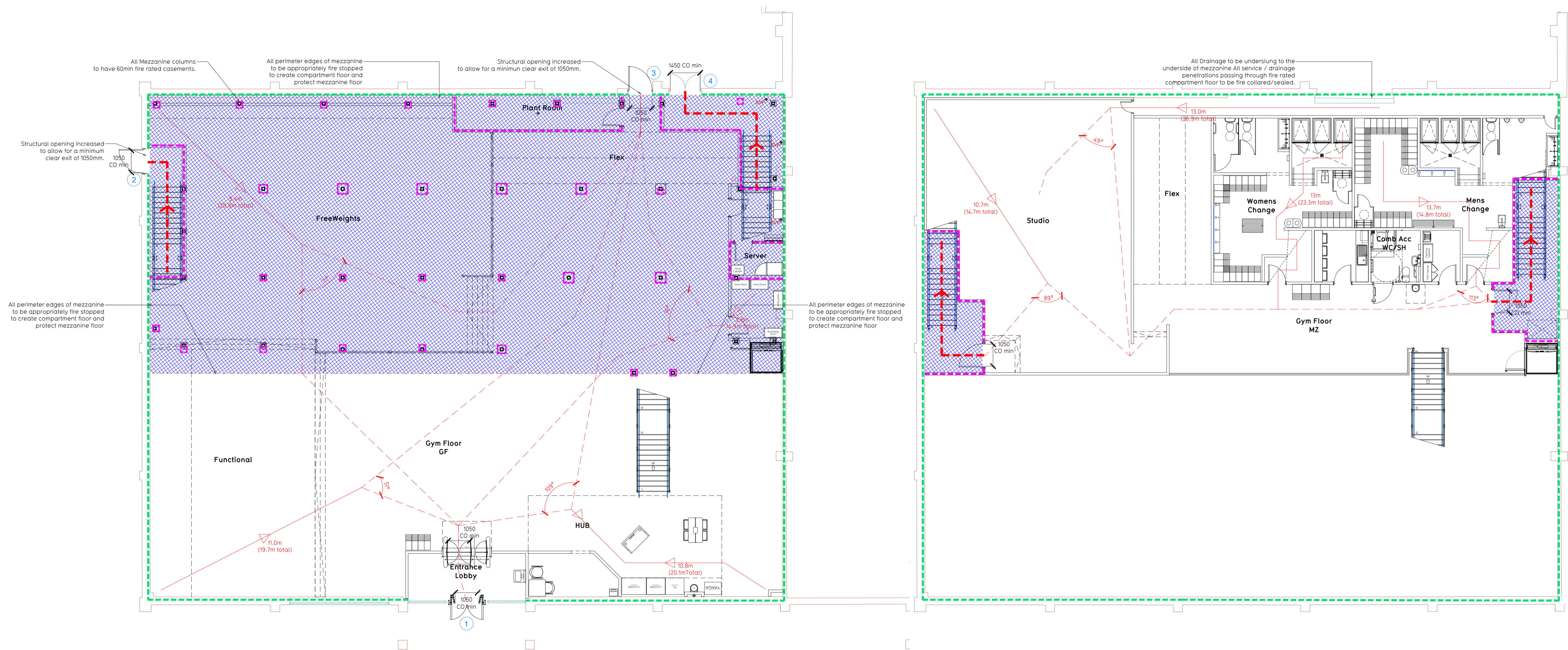


NOTE:

- Proposals must comply with all acoustic, fire & building regulation requirements
- No dimensions are to be scaled from this drawing. The contractor is responsible for checking all dimensions on site
- All proposals to be confirmed following site visit

Peak Occupancy = 305 persons



Escape Route Widths:
 In line with Sections 3.7.6, 3.22 of Approved Document Part B, Volume 2 - buildings other than dwelling houses - the adjacent calculations provide justification for the clear opening widths for escape from each floor level/room in accordance with Table 4 & Appendix C.

Ground Floor
 Final Exit 1 Route min Clear Opening Width = 950mm (allows 220 persons to escape)
 Final Exit 2 Route min Clear Opening Width = 1050mm (largest escape discounted)
 Total Aggregate Width for Floor (Less Largest Opening Width of 1050mm from exit 2) = 1050mm
 Ground Floor Total Estimated Peak Occupancy Capacity = 220 Persons
 Final Exit 1 provides a min. clear width of 950mm and would allow a max. No. of 220 persons to escape. This therefore restricts capacity at Ground floor level to 220 persons in accordance with Approved Document Part B.

Mezzanine
 Final Exit 2 Route min Clear Opening Width = 950mm (allows 220 persons to escape)
 Final Exit 1 Route min Clear Opening Width = 1050mm (allows 220 persons to escape - discounted)
 Total Aggregate Width for Floor (Less Largest Opening Width of 1050mm from Exit 1) = 1050mm
 Mezzanine Floor Total Estimated Peak Occupancy Capacity = 104 Persons
 Final Exit 2 provides a min. clear width of 950mm and would allow a max. No. of 220 persons to escape. This therefore restricts capacity at Mezzanine level to 220 persons in accordance with Approved Document Part B.

Fire Alarm
 Fire Alarm designed and installed to BS 5839. Smoke & heat detection / emergency lighting by specialist. Please refer to M&E engineer's drawings / specifications.

Emergency Escape Lighting
 Emergency Escape Lighting designed and installed in accordance with BS 5266. Part 1. Please refer to M&E Engineer's drawings for final layout and specification.
 Smoke Extract System to be designed and installed in accordance with BS 7246. Part 4. Please refer to M&E Engineer's drawings for final layout and specification.

Rev	Date	Description	Drawn/Checked
C01	06.01.22	Additional notes. Fire protection u/s mezzanine.	HE/IR

PROJECT INFO

Grantham Discovery Retail Park, London Road, MG31 6HR

DRAWING TITLE
 Fire Evacuation Plan Ground Floor & Mezzanine Floor Plans

SK/IR	DATE	SCALE	JOB No.	DRAWING No.
	30.09.21	1:100 @ A1	2005	XX-003-FEP

CONSTRUCTION C01

PUREGYM

Pure Gym Ltd
 Town Centre House
 The Merrion Centre
 Leeds
 LS2 8LY

e: architecture@puregym.com
 t: 0113 265 8787
 w: www.puregym.com