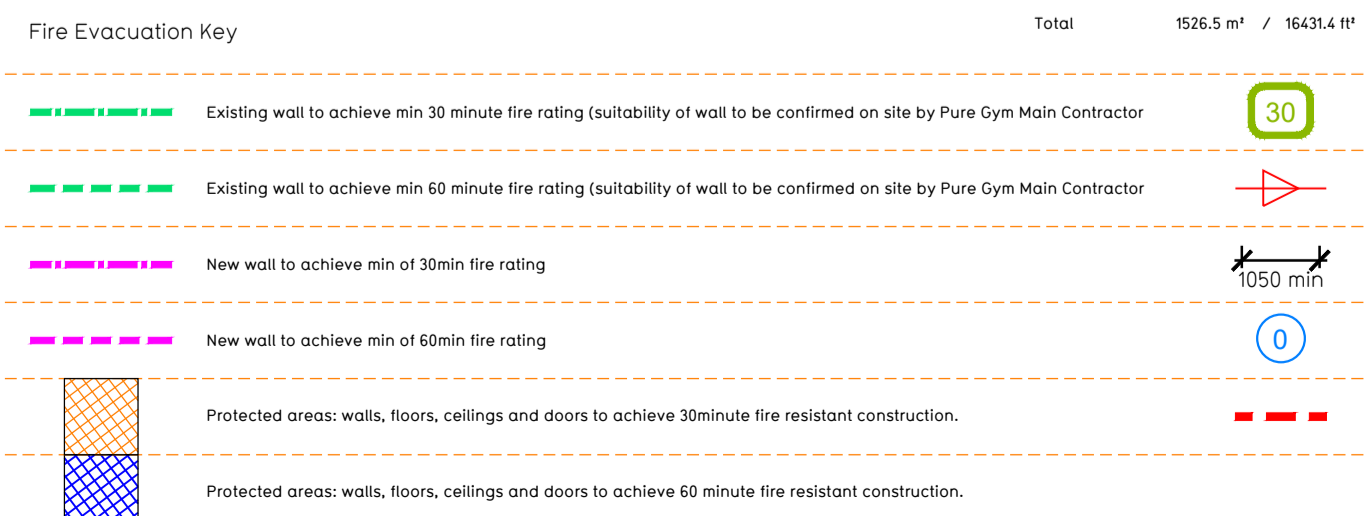
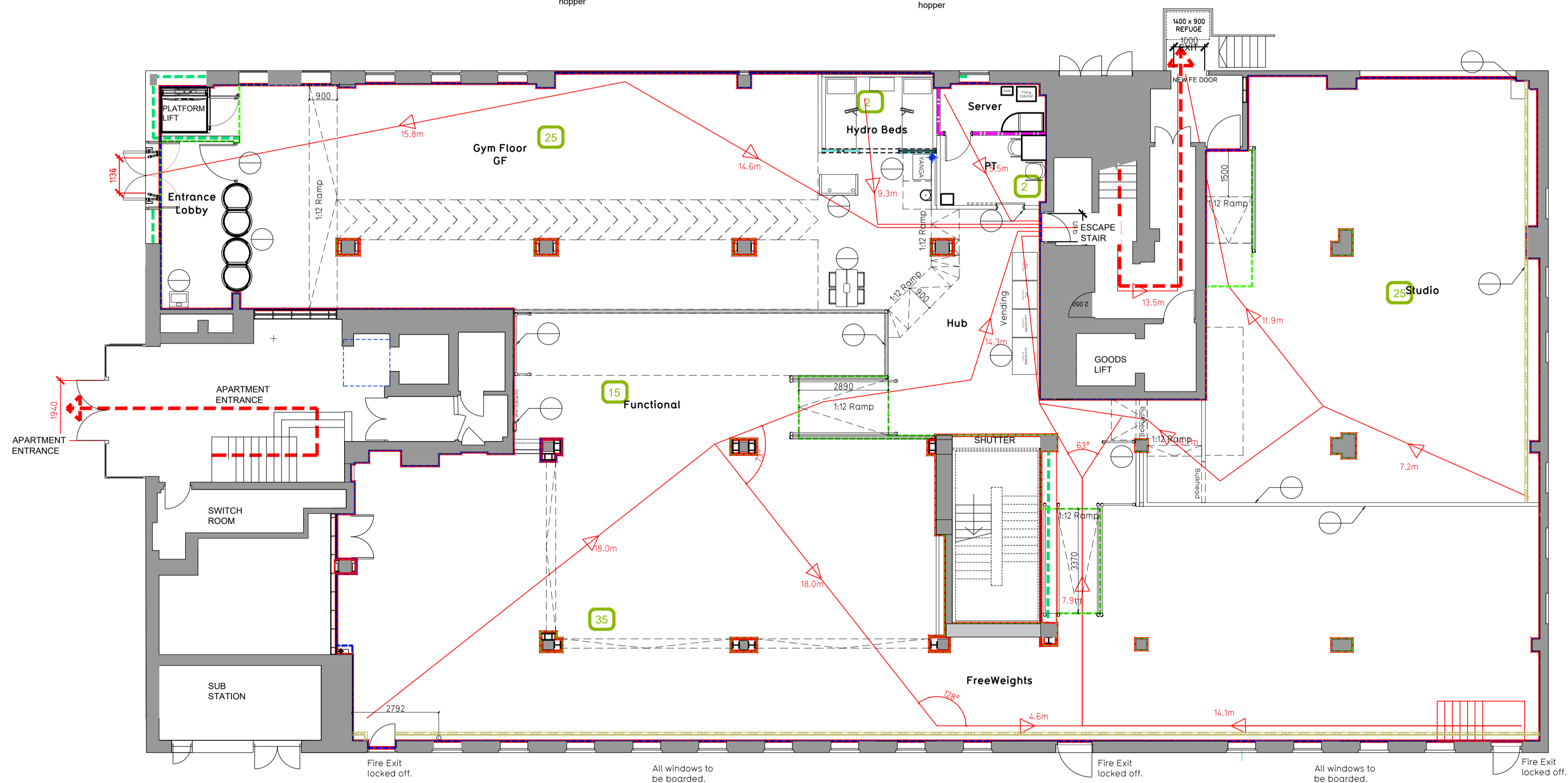


NOTE:
 - Proposals must comply with all acoustic, fire & building regulation requirements
 - No dimensions are to be scaled from this drawing. The contractor is responsible for checking all dimensions on site



Escape Route Widths:
 In line with Sections 3.21 & 3.22 of 'Approved Document Part B, Volume 2 - buildings other than dwellings' - the adjacent calculations provide justification for the clear opening widths for escape from each floor level/ room in accordance with Table 4 & Appendix C.

Ground Floor
 Exit 1 Clear Opening Width = 1134mm (allows 110 persons to escape)
 Exit 2 Clear Opening Width = 1000mm (largest opening to be discounted)
 Exit 3 Clear Opening Width = 944mm (largest opening to be discounted)

Total Aggregate Width for Floor (Less Largest Opening Width of 1000mm from Exit 2) = 1000mm
 Ground Floor Total Estimated Occupancy Capacity = 102 Persons
 Exit 2 provides a min. width of 1000mm and would allow a max. No. of 110 persons to escape, which is larger than the total estimated occupancy capacity of 102 Persons and is therefore thought to meet with the Approved Document Part B.

First Floor
 Exit 1 Clear Opening Width = 1328mm (allows 110 persons to escape)
 Exit 2 Clear Opening Width = 1026mm (allows 110 persons to escape)
 Total Aggregate Width for Floor = 1026mm

Mezzanine Floor Total Estimated Occupancy Capacity = 110 Persons
 Exit 1 provides a min. width of 1328mm and would allow a max. No. of 110 persons to escape, which is larger than the total estimated occupancy capacity of 107 Persons and is therefore thought to meet with the Approved Document Part B.

Signages
 System design and installed in compliance with BS EN 12845:2015 & LPC Technical Bulletins

Fire Alarm
 Fire Alarm designed and installed to BS 5839. Smoke & heat detection / emergency lighting by specialist. Please refer to MSE engineer's drawings / specifications.

Escape Lighting
 Emergency escape lighted designed and installed in accordance with BS 5266: Part 1. Please refer to MSE Engineer's drawings for final layout and specification.

Smoke Extract
 Smoke Extract System to be designed and installed in accordance with BS 7346: Part 8. Please refer to MSE Engineer's drawings for final layout and specification.

Rev	Date	Description	Drawn/Checked

PROJECT TITLE: London Holloway Road
 DRAWING TITLE: Fire Evacuation Plan Ground & First Floor
 COLLINGWOOD BUSINESS CENTRE, MERCERS RD, LONDON N19 4PJ

DRAWN / CHECKED	DATE	SCALE	JOB No.	DRAWING No.
MJI/RSP/IR	20.12.21	1:100 @ A1	0581	003 - FEP - R00

DRAWING PURPOSE: RECORD

Pure Gym Ltd
 Town Centre House
 The Merrion Centre
 Leeds
 LS2 8LY
 e: architecture@puregym.com
 t: 0113 285 8787
 w: www.puregym.com