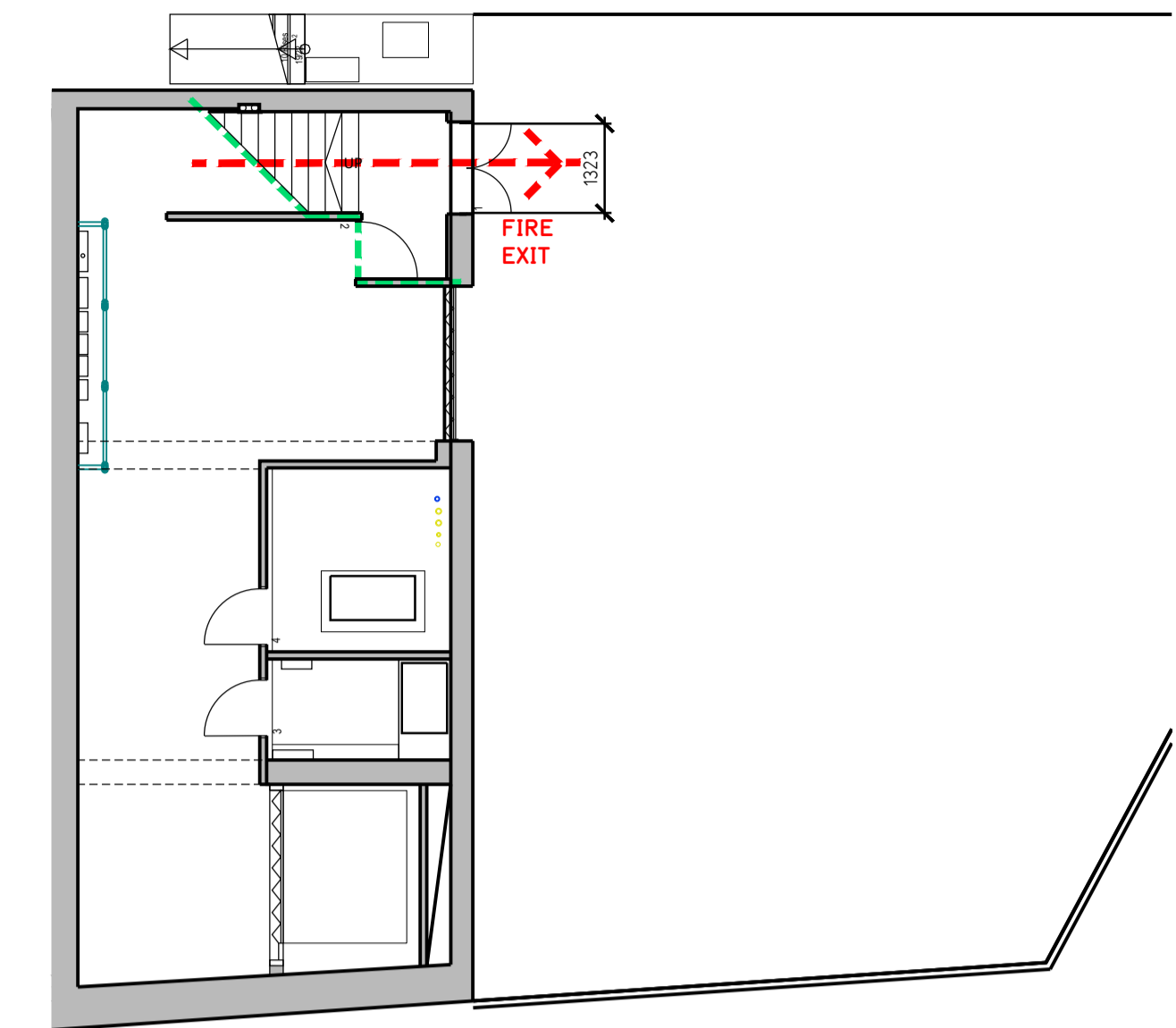
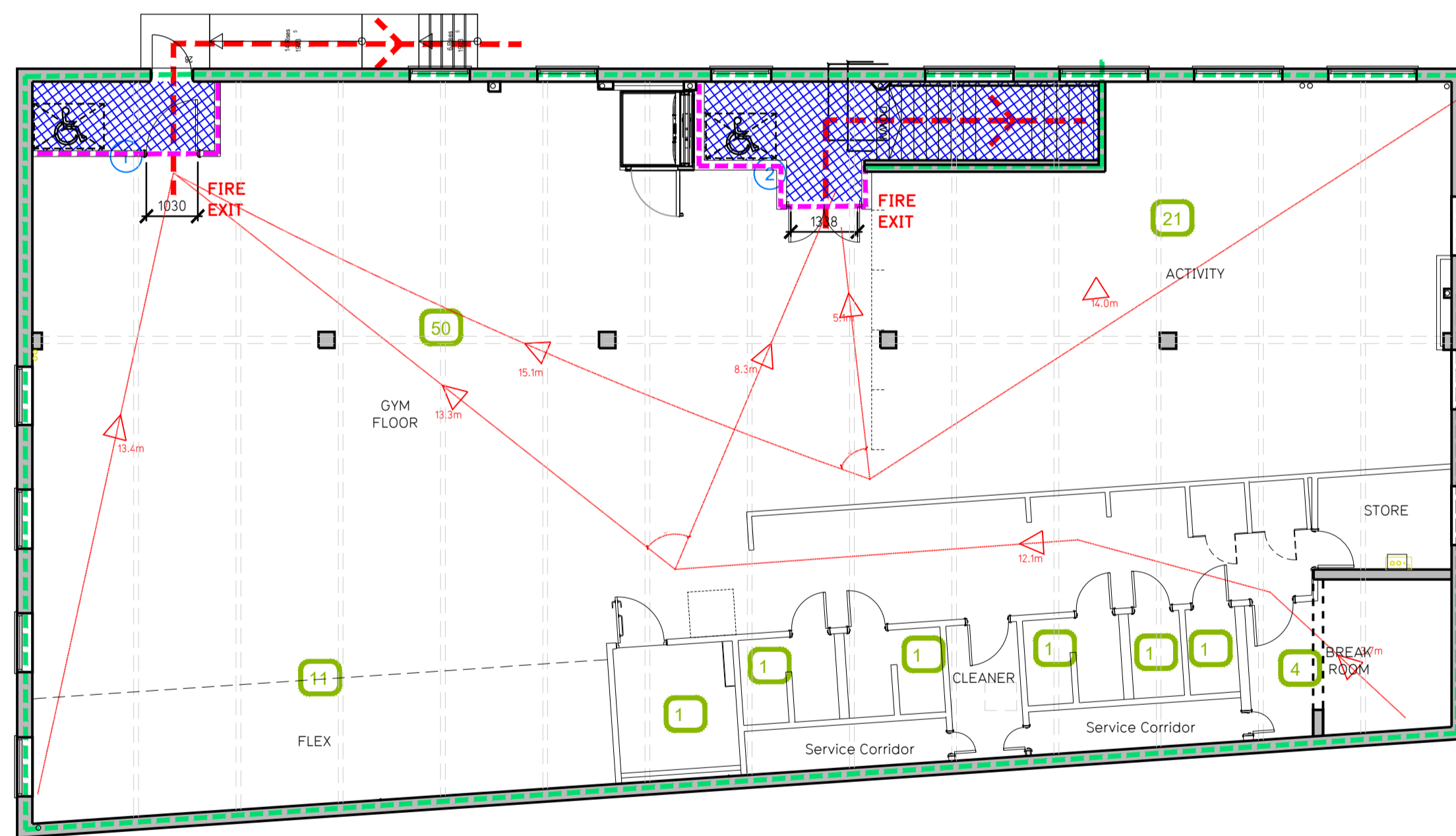


Proposed Plan - Ground Floor






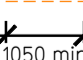
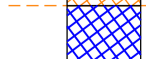




Proposed Plan - Basement Floor



Proposed Plan - First Floor

Fire Evacuation Key

	Existing wall to achieve min 60 minute fire rating (suitability of wall to be confirmed on site by Pure Gym Main Contractor)		Occupancy level within area
	New wall to achieve min of 30min fire rating		Fire Escape Route
	Protected areas: walls, floors, ceilings and doors to achieve 30minute fire resistant construction.		Minimum Clear Widths
	Protected areas: walls, floors, ceilings and doors to achieve 60 minute fire resistant construction.		Exit No.
			Shared Escape Route

Escape Route Widths

In line with Sections 3.21 & 3.22 of 'Approved Document Part B, Volume 2 - buildings other than dwellinghouses' - the adjacent calculations provide justification for the clear opening widths for escape from each floor level/ room in accordance with Table 4 & Appendix C.

Ground Floor

Exit 1 Clear Opening Width = 1450mm (allows 220 persons to escape)
 Exit 2 Clear Opening Width = 1650mm (largest opening to be discounted)
 Total Aggregate Width for Floor (Less Largest Opening Width of 1650mm from Exit 2) = 1450mm
 Ground Floor Total Estimated Occupancy Capacity = 158 Persons
 Exit 1 provides a min. width of 1450mm and would allow a max. No. of 220 persons to escape, which is larger than the total estimated occupancy capacity of 158 Persons and is therefore thought to meet with the Approved Document Part B.

Fire Alarm

Fire Alarm designed and installed to BS 5839. Smoke & heat detection / emergency lighting by specialist. Please refer to M&E engineer's drawings / specifications.

Escape Lighting

Emergency escape lighting designed and installed in accordance with BS 5266: Part 1. Please refer to M&E Engineer's drawings for final layout and specification.

Rev	Date	Description	Drawn/Checked
B	19/09/19	Layout amended to reflect updated survey info	MC/PG
A	02/09/19	Lift structural walls retained, layout amended to suit. Amends to suit ops comments. New fire rated meter cabinet	MC/PG

PROJECT TITLE	DRAWING TITLE
Didcot 1308, The Broadway, Didcot, Oxfordshire, OX11 8RG	Proposed Fire Evacuation Plan Basement, Ground & First Floor
MC/PG	09/08/19
1:100 @ A1	IA-SBF-014 003-FEP
CONSTRUCTION	B

Pure Gym Ltd
 Town Centre House
 The Merriem Centre
 Leeds
 LS2 8LY
 e: architecture@puregym.com
 t: 0113 285 8787
 w: www.puregym.com