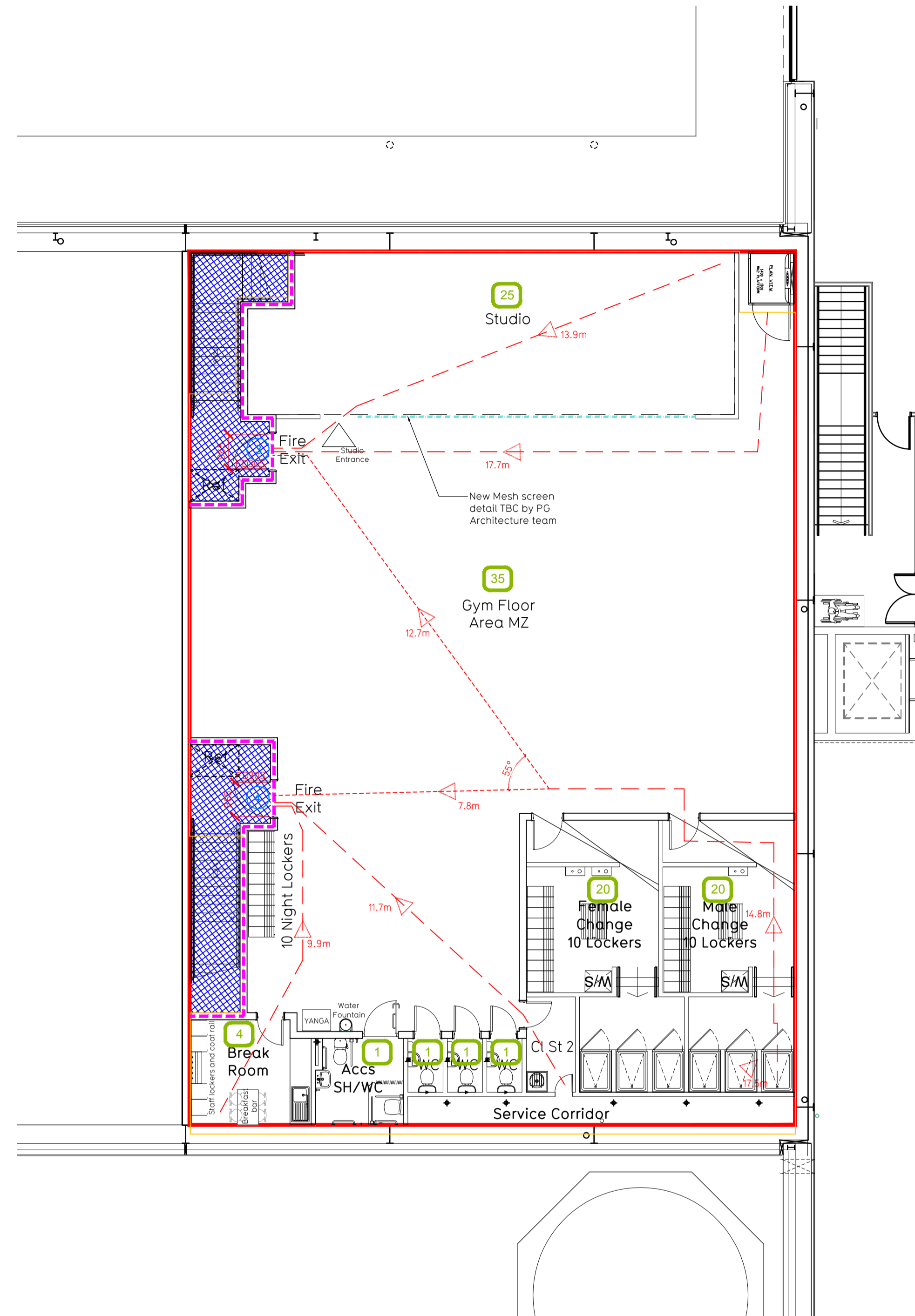


Proposed Ground Floor Fire Evacuation Plan
1:100



Proposed Mezzanine Floor Fire Evacuation Plan
1:100

Fire Evacuation Key

- Existing wall to achieve min 60 minute fire rating (suitability of wall to be confirmed on site by Pure Gym Main Contractor)
- New wall to achieve min of 60min fire rating
- Protected areas: walls, floors, ceilings and doors to achieve 30minute fire resistant construction.
- Protected areas: walls, floors, ceilings and doors to achieve 60 minute fire resistant construction.
- 30 Occupancy level within area
- Fire Escape Route
- Minimum Clear Widths
- 0 Exit No.

Escape Route Widths
In line with Sections 3.21 & 3.22 of 'Approved Document Part B, Volume 2 - buildings other than dwellings' - the adjacent calculations provide justification for the clear opening widths for escape from each floor level/ room in accordance with Table 4.6 Appendix C.

Ground Floor Estimated Occupancy Capacity +85 Persons
First Floor Estimated Occupancy Capacity +08 Persons
Total Estimated Occupancy Capacity +93 Persons

Ground Floor
Exit 1 min Clear Opening Width = 1335mm
Exit 2 min Clear Opening Width = 1335mm (opening to be discounted in case of obstruction)

Both Exit 1 and Exit 2 provide a min. width of 1335mm and would therefore both allow a max. No. of 267 persons to escape via a single exit. Taking into account the discounting of one exit, either exit is able to accommodate more than the total estimated Ground Floor occupancy of 107 Persons. This is therefore thought to comply with the requirements set out in Approved Document Part B.

Mezzanine Floor
Exit 3 min Clear Opening Width = 965mm
Exit 4 min Clear Opening Width = 965mm (opening to be discounted in case of obstruction)

Both Exit 3 and Exit 4 provide a min. width of 965mm and would therefore both allow a max. No. of 10 persons to escape via a single exit. Taking into account the discounting of one exit, either exit is able to accommodate more than the total estimated Ground Floor occupancy of 85 Persons. This is therefore thought to comply with the requirements set out in Approved Document Part B.

Final Escape Widths
Final Exit A min Clear Opening Width = 1050mm
Final Exit B min Clear Opening Width = 1755mm (opening to be discounted in case of obstruction)

Exit A and Exit B are the final points of exit from the unit and have to a min. clear width sufficient to accommodate both Ground and Mezzanine occupancies. Both exits have a minimum clear width in excess of 1050mm, with either providing sufficient capacity to provide means of escape for in excess of 220 people. Even when discounting the larger Final Exit B. This exceeds the combined estimated Ground & Mezzanine Floor occupancy of 93 persons. This is therefore thought to comply with the requirements set out in Approved Document Part B.

Fire Alarm
Fire Alarm designed and installed to BS 5839. Smoke & heat detection / emergency lighting by specialist. Please refer to M&E engineer's drawings / specifications.

Escape Lighting
Emergency lighting designed and installed to with BS 5266. Part 1. Please refer to M&E Engineer's drawings / specification.

PROJECT TITLE MBF-Unit 1B, Mannington Retail Park Witshire, Swindon, SN5 8WA	DRAWING TITLE Fire Evacuation Plan Ground and Mezzanine Floors
PROJECT NO IR/PG	SCALE 1:100 @ A1
DRAWING NO IA-MBF-003	DRAWING NO XX-003-FEP
CONSTRUCTION	
PROJECT TITLE MBF-Unit 1B, Mannington Retail Park Witshire, Swindon, SN5 8WA	
PROJECT NO IR/PG	SCALE 1:100 @ A1
DRAWING NO IA-MBF-003	DRAWING NO XX-003-FEP
CONSTRUCTION	
PROJECT TITLE MBF-Unit 1B, Mannington Retail Park Witshire, Swindon, SN5 8WA	
PROJECT NO IR/PG	
DRAWING NO IA-MBF-003	
CONSTRUCTION	

Rev / Date Description

IR/PG

Drawn / Checked

Rev / Date Description

IR/PG

Drawn / Checked

Rev / Date Description

IR/PG

Drawn / Checked

Rev / Date Description

IR/PG

Drawn / Checked

Pure Gym Ltd
Town Centre House
The Merrion Centre
Leeds
LS2 8LY

e: architecture@puregym.com
t: 01132162674
w: www.puregym.com