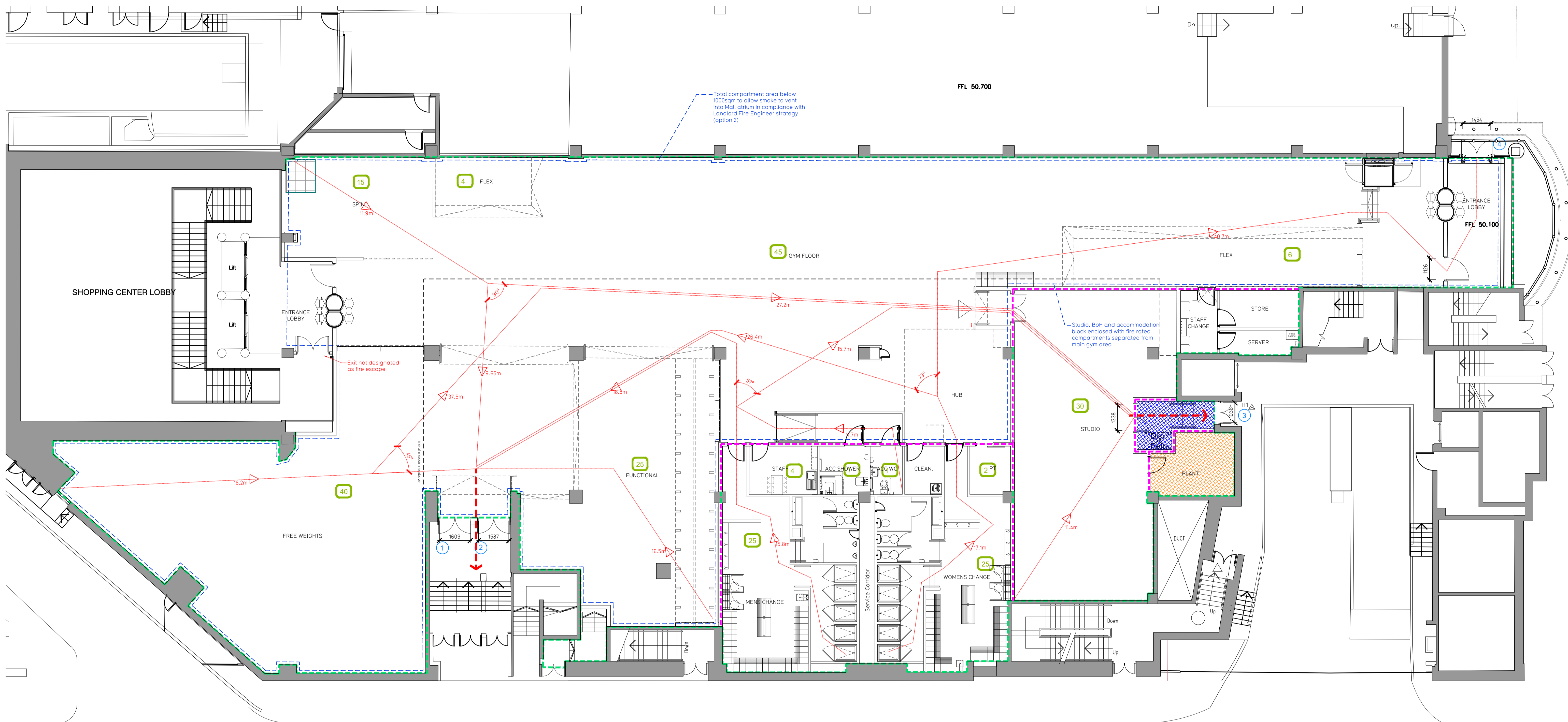


NOTE:

- Proposals must comply with all acoustic, fire & building regulation requirements
- No dimensions are to be scaled from this drawing. The contractor is responsible for checking all dimensions on site



Proposed Ground Floor Plan

Fire Evacuation Key

- Existing wall to achieve min 60 minute fire rating (suitability of wall to be confirmed on site by Pure Gym Main Contractor)
- New wall to achieve min of 60min fire rating
- Protected areas: walls, floors, ceilings and doors to achieve 30minute fire resistant construction.
- Protected areas: walls, floors, ceilings and doors to achieve 60 minute fire resistant construction.
- Occupancy level within area
- Fire Escape Route
- Minimum Clear Widths
- Exit No.
- Shared Escape Route

Escape Route Widths:
In line with Sections 3.21 & 3.22 of 'Approved Document Part B, Volume 2 - buildings other than dwellings' - the adjacent calculations provide justification for the clear opening widths for escape from each floor level/ room in accordance with Table 4 & Appendix C.

Ground Floor
Exit 1 Clear Opening Width = 1538mm (largest opening to be discounted)
Exit 2 Clear Opening Width = 1538mm (largest opening to be discounted)
Exit 3 Clear Opening Width = 1338mm (allows 110 persons to escape)
Exit 4 Clear Opening Width = 1134 mm (allows 110 persons to escape)
Total Aggregate Width for Floor (Less Largest Opening Width of 1134mm from Exit 4) = 1050mm
Ground Floor Total Estimated Occupancy Capacity = 220 Persons
Exit 4 provides a min. width of 1050mm and would allow a max. No. of 220 persons to escape, which is larger than the total estimated occupancy capacity of 107 Persons and is therefore thought to meet with the Approved Document Part B.

Sprinklers
System design and installed in compliance with BS EN 12845:2015 & LPC Technical Bulletins
Fire Alarm
Fire Alarm designed and installed to BS 5839. Smoke & heat detection / emergency lighting by specialist. Please refer to MSE engineer's drawings / specifications.
Escape Lighting
Emergency escape lighted designed and installed in accordance with BS 5266: Part 1. Please refer to MSE Engineer's drawings for final layout and specification.
Smoke Extract
Smoke Extract System within demise not required. Smoke to vent into Mall atrium as per Landlords fire engineer strategy Option 2. Refer to JGA Fire Engineering Review

A		17/10/19 Layout amended to reflect current BOLT standards		MC/PG
Rev	Date	Description	Drawing Title	Drawn/Checked
			Hemel Hempstead	Fire Evacuation Plan
			Ground Floor Plan	
DRAWN/CHECKED	DATE	SCALE	DRAWING NO.	REV
MC/PG	30/09/19	1:100 @ A1	LBF-044	003 - FEP
CONSTRUCTION				A

PUREGYM

Pure Gym Ltd
Town Centre House
The Merriam Centre
Leeds
LS2 8LY
e: architecture@puregym.com
t: 0113 285 8787
w: www.puregym.com