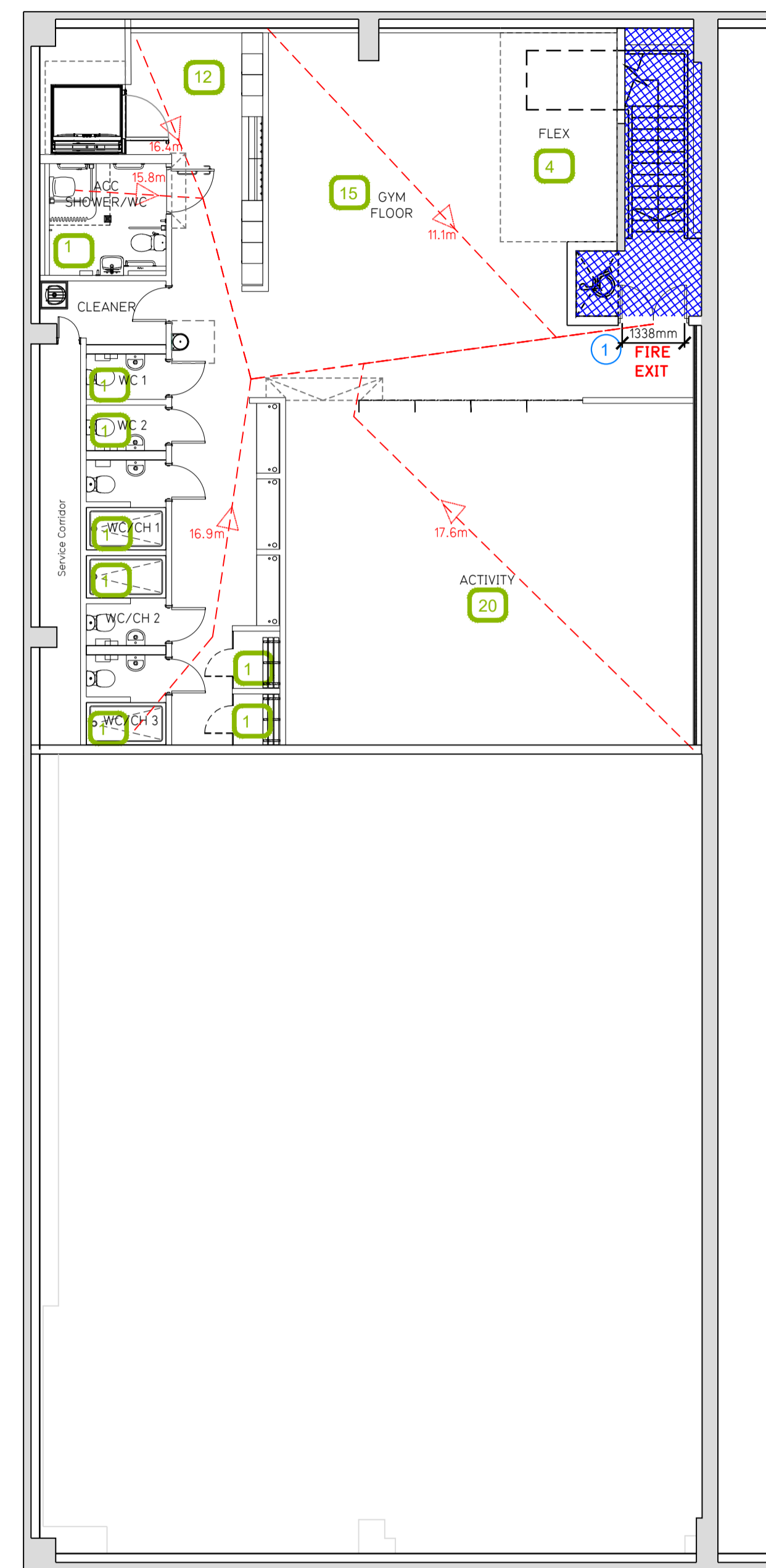


Existing Plan - Ground Floor



Existing Plan - Mezzanine Floor

Fire Evacuation Key

- Existing wall to achieve min 60 minute fire rating (suitability of wall to be confirmed on site by Pure Gym Main Contractor)
- New wall to achieve min of 30min fire rating
- Protected areas: walls, floors, ceilings and doors to achieve 30minute fire resistant construction.
- Protected areas: walls, floors, ceilings and doors to achieve 60 minute fire resistant construction.
- 30 Occupancy level within area
- Fire Escape Route
- Minimum Clear Widths
- 0 Exit No.
- Shared Escape Route

Escape Route Widths

In line with Sections 3.21 & 3.22 of 'Approved Document Part B, Volume 2 - buildings other than dwellings' - the adjacent calculations provide justification for the clear opening widths for escape from each floor level/ room in accordance with Table 4 & Appendix C.

Ground Floor

Exit 1 Clear Opening Width = 1166mm (allows 220 persons to escape)
 Exit 2 Clear Opening Width = 1926mm (largest opening to be discounted)
 Total Aggregate Width for Floor (Less Largest Opening Width of 1926mm from Exit 2) = 1450mm
 Ground Floor Total Estimated Occupancy Capacity = 158 Persons

Exit 1 provides a min. width of 1166mm and would allow a max. No. of 220 persons to escape, which is larger than the total estimated occupancy capacity of 158 Persons and is therefore thought to meet with the Approved Document Part B.

Mezzanine Floor

Exit 1 Clear Opening Width = 1338mm (allows 220 persons to escape)
 Mezzanine Floor Total Estimated Occupancy Capacity = 158 Persons

Exit 1 provides a min. width of 1338mm and would allow a max. No. of 220 persons to escape, which is larger than the total estimated occupancy capacity of 158 Persons and is therefore thought to meet with the Approved Document Part B.

Fire Alarm

Fire Alarm designed and installed to BS 5839. Smoke & heat detection / emergency lighting by specialist. Please refer to M&E engineer's drawings / specifications.

Escape Lighting

Emergency escape lighted designed and installed in accordance with BS 5266: Part 1. Please refer to M&E Engineer's drawings for final layout and specification.

Rev	Date	Description	DRAWING TITLE
Rayleigh Unit 1b, Pelican Retail Park, Claydons Lane, Essex, SS6 7UP Proposed Fire Evacuation Plan Ground & Mezzanine Floor			
CONSTRUCTION			
			Pure Gym Ltd Town Centre House The Merrion Centre Leeds LS2 8LY e: architecture@puregym.com t: 0113 285 8787 w: www.puregym.com