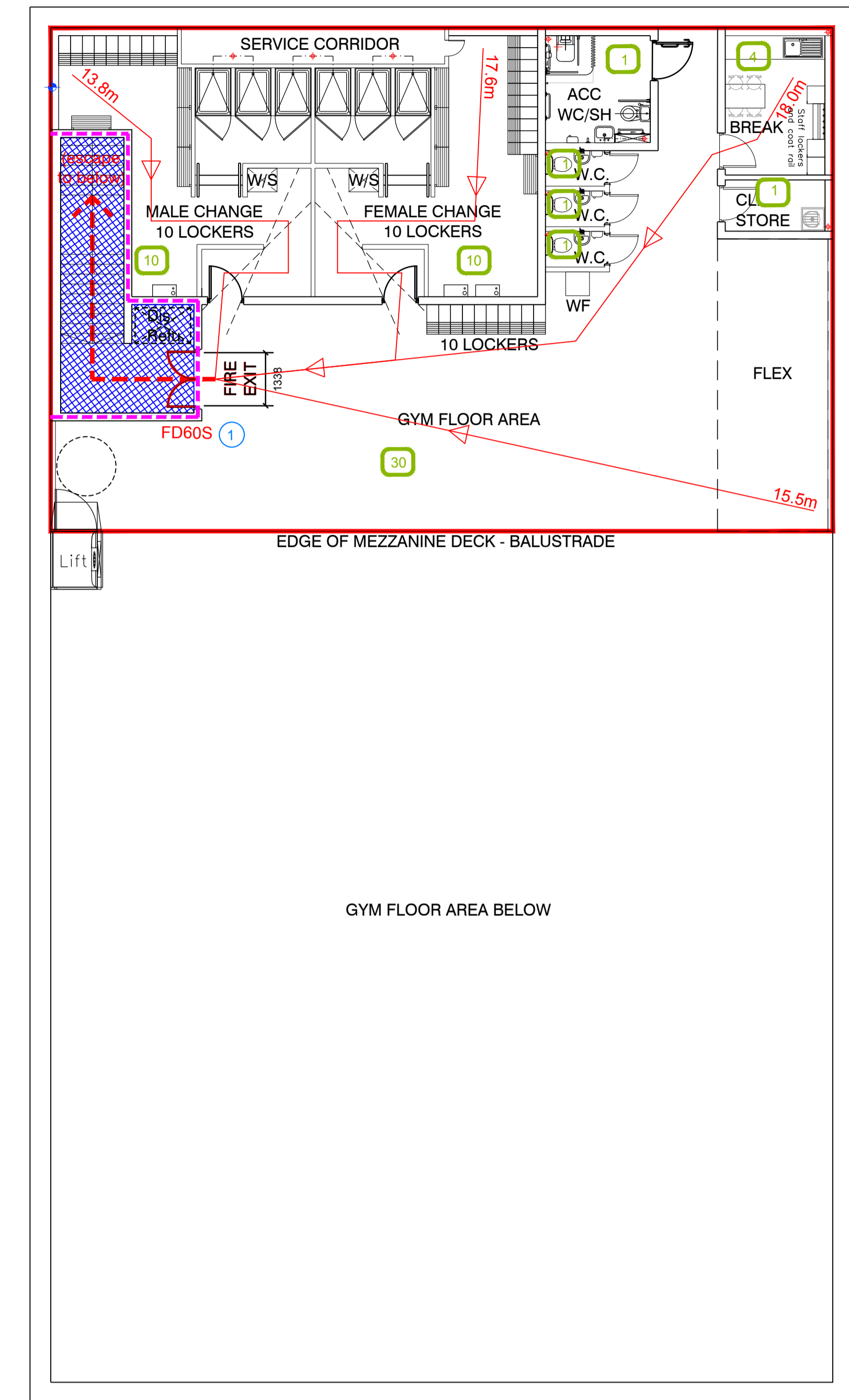


Ground Floor General Arrangement Plan



Mezzanine Floor General Arrangement Plan

Fire Evacuation Key

	Existing wall to achieve min 60 minute fire rating (suitability of wall to be confirmed on site by Pure Gym Main Contractor)		Occupancy level within area
	New wall to achieve min of 60min fire rating		Fire Escape Route
	Protected areas: walls, floors, ceilings and doors to achieve 30minute fire resistant construction.		Minimum Clear Widths
	Protected areas: walls, floors, ceilings and doors to achieve 60 minute fire resistant construction.		1050 min
			Exit No.
			Shared Escape Route

Escape Route Widths

In line with Sections 3.21 & 3.22 of 'Approved Document Part B, Volume 2 - buildings other than dwellinghouses' - the adjacent calculations provide justification for the clear opening widths for escape from each floor level/ room in accordance with Table 4 & Appendix C.

Ground Floor

Exit 1 Clear Opening Width = 850mm (allows 110 persons to escape)
Exit 2 Clear Opening Width = 1100mm (largest opening to be discounted)

Total Aggregate Width for Floor (Less Largest Opening Width of 1100mm from Exit 2) = 850mm

Ground Floor Total Estimated Occupancy Capacity = 107 Persons

Exit 1 provides a min. width of 850mm and would allow a max. No. of 110 persons to escape, which is larger than the total estimated occupancy capacity of 107 Persons and is therefore thought to meet with the Approved Document Part B.

Sprinklers

System design and installed in compliance with BS EN 12845:2015 & LPC Technical Bulletins

Fire Alarm

Fire Alarm designed and installed to BS 5839. Smoke & heat detection / emergency lighting by specialist. Please refer to M&E engineer's drawings / specifications.

Escape Lighting

Emergency escape lighting designed and installed in accordance with BS 5266: Part 1. Please refer to M&E Engineer's drawings for final layout and specification.

Rev	Date	Description	AT / PG
C	20.03.19	Flex moved upstairs.	AT / PG
B	07.02.19	Updated following receipt of mezz drawings.	AT / PG
A	30.01.19	Updated in line with latest GA.	AT / PG

PROJECT TITLE		DRAWING TITLE	
Folkestone		Demolition Works Plan	
Unit A, Park Farm Industrial Estate, Kings Way, Kent, CT19 5FF Ground & Mezzanine Floor			
DRAWN BY	DATE	SCALE	DRAWING No.
AT/PG	14.01.19	1:100 @ A1	IA-LBF-024 003-FEP
DRAWING PURPOSE		Rev	
CONSTRUCTION		C	

Pure Gym Ltd
Town Centre House
The Merriem Centre
Leeds
LS2 9LY

e: architecture@puregym.com
t: 0113 285 8787
w: www.puregym.com