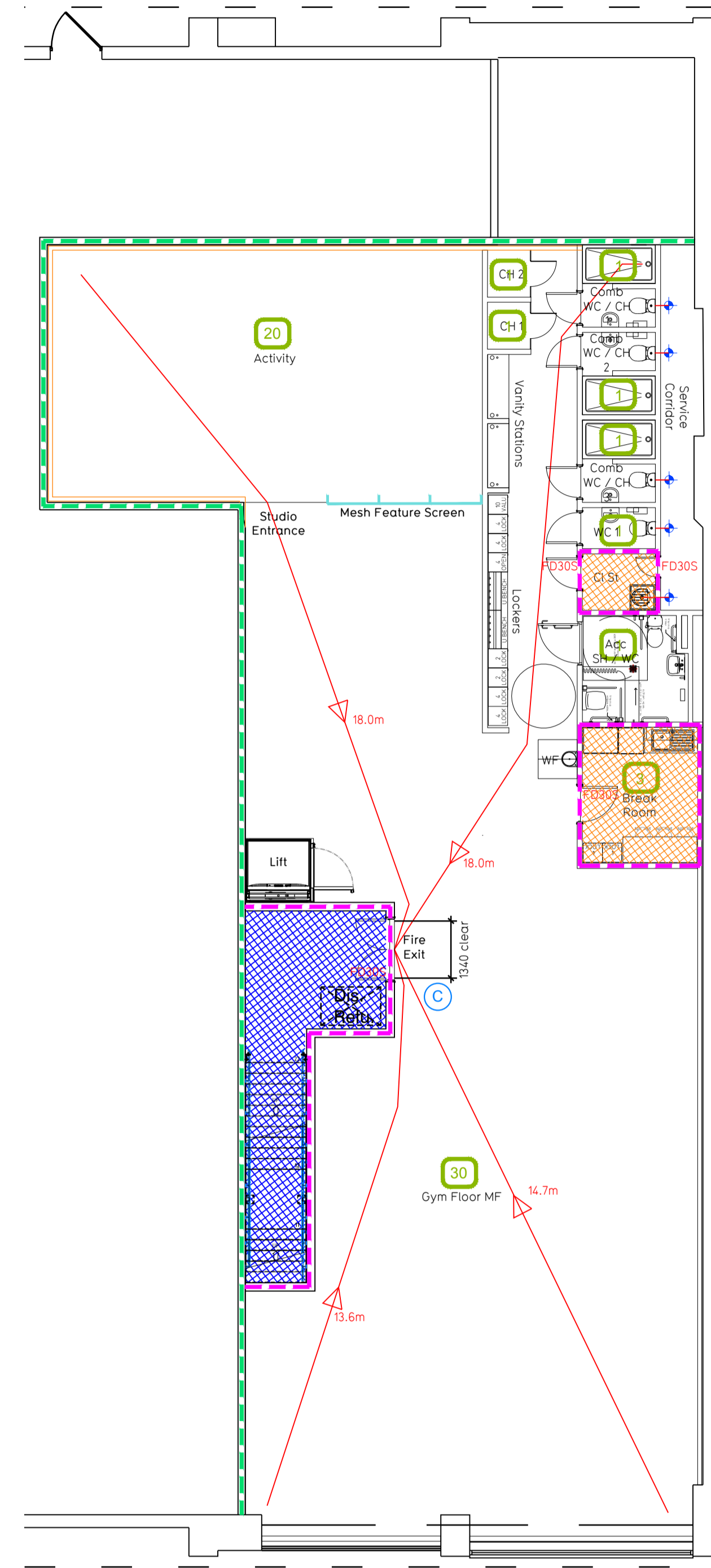


Proposed Ground Floor Fire Evacuation Plan
1:100



Proposed Mezzanine Floor Fire Evacuation Plan
1:100

Fire Evacuation Key

- Existing wall to achieve min 60 minute fire rating (suitability of wall to be confirmed on site by Pure Gym Main Contractor)
- New wall to achieve min of 60min fire rating
- Protected areas: walls, floors, ceilings and doors to achieve 30minute fire resistant construction.
- Protected areas: walls, floors, ceilings and doors to achieve 60 minute fire resistant construction.
- 30 Occupancy level within area
- Fire Escape Route
- Minimum Clear Widths
- 0 Exit No.
- Shared Escape Route

Escape Route Widths
In line with Sections 3.21.6, 3.22 of 'Approved Document Part B, Volume 2 - buildings other than dwellings' - the adjacent calculations provide justification for the clear opening widths for escape from each floor level/ room in accordance with Table 4 & Appendix C.

Ground Floor
Exit A Clear Opening Width = 1320mm (allows 264 persons to escape) (based upon 5mm per person).
Exit B Clear Opening Width = 1700mm (largest opening to be discounted)
Total Aggregate Width for Ground Floor (Less Largest Opening Width of 1700mm from Exit B) = 1320mm
Ground Floor Total Estimated Occupancy Capacity = 80 Persons

Taking into account the clear opening width of Exit A (after discounting Exit B) this would allow a max. No. of 264 persons to escape in case of an emergency. This is larger than the total estimated occupancy of 80 Persons and is therefore thought to meet with the Approved Document Part B.

First Floor
Exit C Clear Opening Width = 1320mm (allows 264 persons to escape)
First Floor Total Estimated Occupancy Capacity = 60 Persons

Taking into account the clear opening width of Exit C this would allow a max. No. of 264 persons to escape in case of an emergency. The limiting factor in the escape route is the staircase width in the protected stairway. Even when taking this into consideration this is sufficient to accommodate 240 persons which is larger than the total estimated first floor occupancy of 61 Persons and is therefore thought to meet with the Approved Document Part B.

Where the final point of escape of ground floor is located the speed gates provide a combined clear width of 1625mm which is sufficient to take the combined occupancy of both the Ground and First Floor in the eventuality that the Exit B is discounted from the assessment. The Speed gates are linked to the Fire Alarm and in the event of an evacuation would default to an open position.

Sprinklers
System design and installed in compliance with BS EN 12845:2015 & LPC Technical Bulletins

Fire Alarm
Fire alarm designed and installed to BS 5839. Smoke & heat detection / emergency lighting by specialist. Please refer to M&E engineer's drawings / specifications.

Escape Lighting
Emergency escape lighting designed and installed in accordance with BS 5266: Part 1. Please refer to M&E Engineer's drawings for final layout and specification.

A	10.01.19	Functional Area updated following Operations & Commercial Feedback. Server room relocated to rear of building. FR of Cleaners and Break room enclosing walls annotated as 60min with 30min Fire Doors following feedback from Morgan Wolff	IR/PG
Rev	Date	Description	Drawn/ Checked
PROJECT TITLE			
Hereford		Proposed Fire Evacuation Plan	
Maplin, Holmer Road, Hereford, HR4 9SB, Herefordshire		Ground & Mezzanine Floor	
DRAWING CONTROL			
IR/PG	06.01.18	1:100@A1	IA-SBF-009 XX-003-FEP
DRAWING PURPOSE			
CONSTRUCTION			A
			Pure Gym Ltd Town Centre House The Merrion Centre Leominster LS2 8LY e: architecture@puregym.com t: 0113 285 8787 w: www.puregym.com