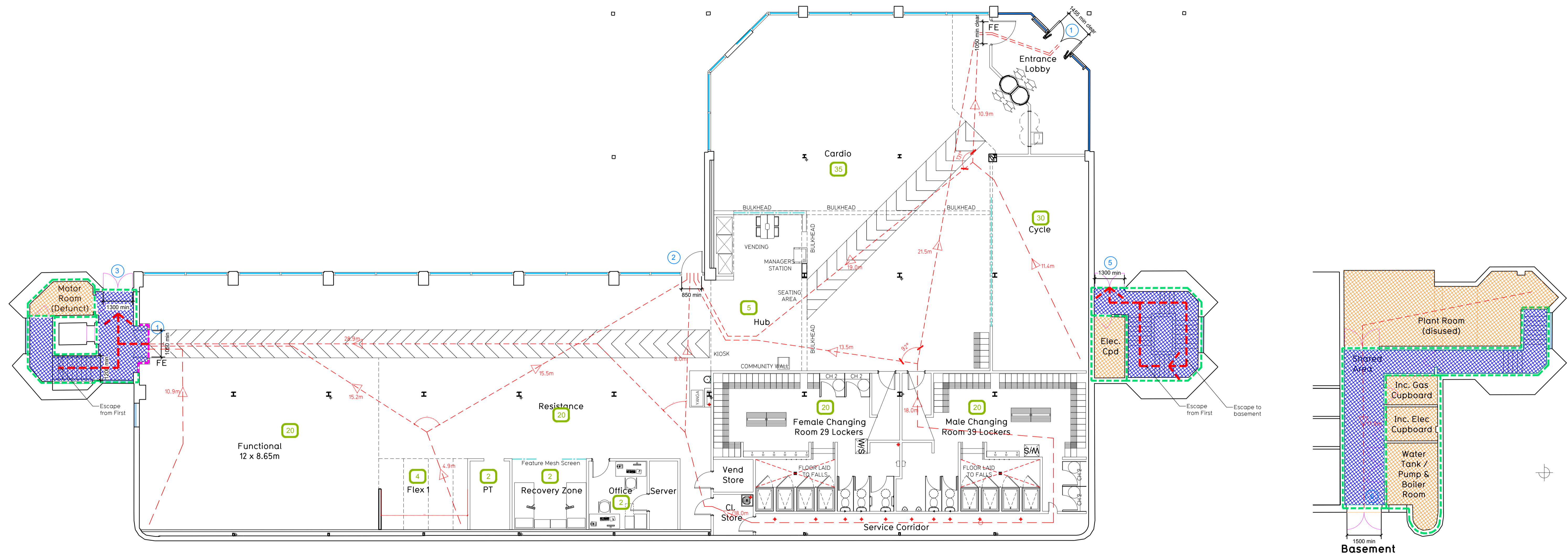


First



Ground

Fire Evacuation Key

	Existing wall to achieve min 60 minute fire rating (suitability of wall to be confirmed on site by Pure Gym Main Contractor)		Occupancy level within area
	New wall to achieve min of 60min fire rating		Fire Escape Route
	Protected areas: walls, floors, ceilings and doors to achieve 30minute fire resistant construction.		Minimum Clear Widths
	Protected areas: walls, floors, ceilings and doors to achieve 60 minute fire resistant construction.		Exit No.
			Protected Escape Route

Escape Route Widths

In line with Sections 3.21 & 3.22 of 'Approved Document Part B, Volume 2 - buildings other than dwellings' - the adjacent calculations provide justification for the clear opening widths for escape from each floor level/ room in accordance with Table 4 & Appendix C.

Ground Floor Estimated Occupancy Capacity +160 Persons  
 First Floor Estimated Occupancy Capacity +110 Persons  
 Total Estimated Occupancy Capacity +270 Persons

Ground Floor

Exit Route 1 min Clear Opening Width + min 1450mm clear width (allows 200 people to escape) (opening to be discounted in case of obstruction)  
 Exit Route 2 min Clear Opening Width + 850mm clear width (allows 10 people to escape)  
 Exit Route 3 min Clear Opening Width + min 1300mm clear width (allows 260 people to escape)

First Floor

Exit Route 4 min Clear Opening Width + min 1000mm clear width (allows 240 people to escape)  
 Exit Route 5 min Clear Opening Width + min 1000mm clear width (allows 240 people to escape) (opening to be discounted in case of obstruction)

Taking into account the discounting of Exit Route 1 from the appraisal in accordance with Section 3.21 of 'Approved Document Part B, Volume 2, Exit Route 2 & 3 have a combined capacity sufficient to accommodate 370 people in case of an evacuation taking place. In addition to this being sufficient to facilitate the complete evacuation of the Ground Floor.

The final point of escape of Route 3 (1300mm Clear width + 260 persons) has sufficient capacity to accommodate 160 people from the First Floor and 100 people from the Ground Floor. In the scenario that Routes 1 & 5 become unusable. In this case the remaining 10 people from the Ground Floor can be accommodated via Exit Route 2. The same solution is also achievable with regards to Exit Route 1, 2 & 5 should both Exit Route 3 & 4 should become inaccessible due to fire. This is therefore thought to comply with the requirements set out in Approved Document Part B.

Basement Floor

Exit Route 6 min Clear Opening Width + min 1500mm clear width (allows 240 people to escape)

With only informal access required to the plant rooms found in the basement, Exit Route 6 provides a significant over provision for escape from the basement and in the event of Exit Route 5's final point of escape at ground floor being blocked, the staircase down to Exit Route 6 can provide sufficient means of escape to also accommodate the entire occupancy of the First Floor.

Fire Alarm

Fire Alarm designed and installed to BS 5839. Smoke & heat detection / emergency lighting by specialist. Please refer to M&E engineer's drawings / specifications.

Escape Lighting

Emergency lighting designed and installed to BS 5266: Part 1. Please refer to M&E Engineer's drawings / specification.

Rev	Date	Description	Drawn/	Checked
PROJECT TITLE <b>LBF - Brodie House, Telford</b>				
DRAWING TITLE <b>Fire Evacuation Plans</b>			DRAWING No.	
DRAWING NUMBER <b>Basement, Ground &amp; First</b>			DRAWING No.	
IR/PG	DATE	SCALE	DATE	SCALE
19.09.18	1:100@A1 / 1:200@A3	IA-LBF-016	X-007-FEP	
DRAWING PURPOSE <b>CONSTRUCTION</b>				
Pure Gym Ltd Town Centre House The Merriem Centre Leeds LS2 6LY e: architecture@puregym.com t: 01132162674 w: www.puregym.com				