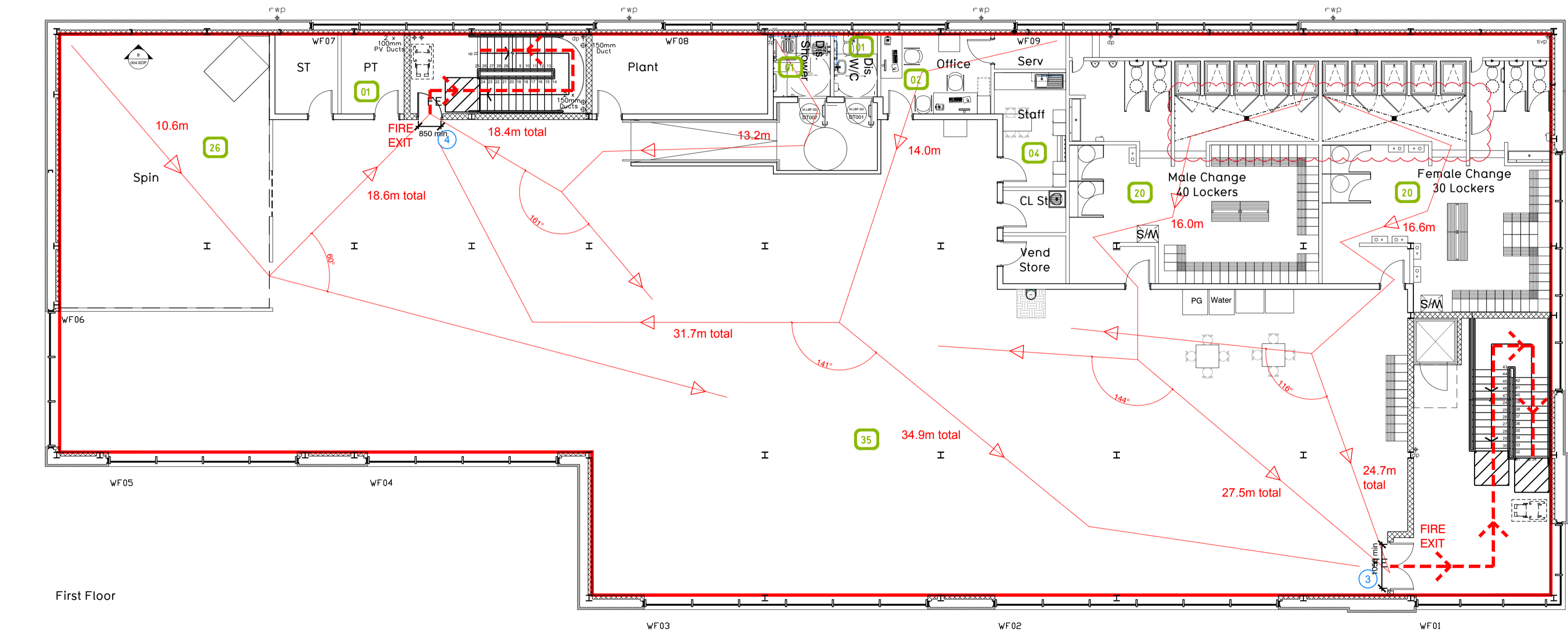
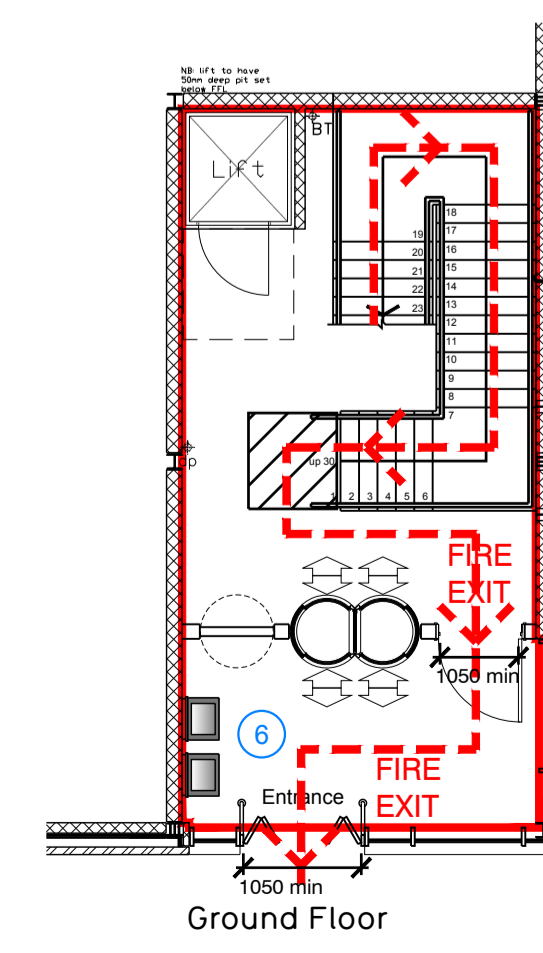
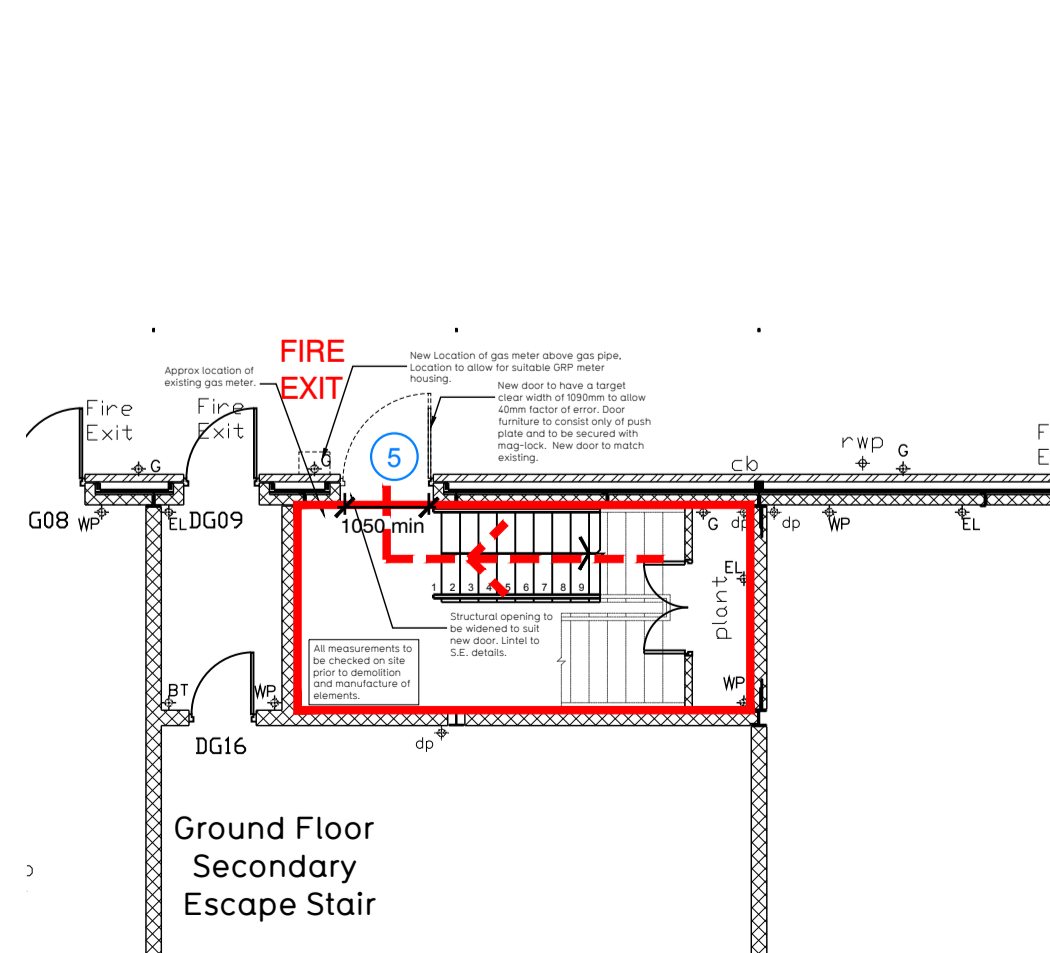


Second Floor



First Floor



Fire Evacuation Key

- Existing wall to achieve min 60 minute fire rating (suitability of wall to be confirmed on site by Pure Gym Main Contractor)
- New wall to achieve min of 60min fire rating
- Protected areas: walls, floors, ceilings and doors to achieve 30minute fire resistant construction.
- Protected areas: walls, floors, ceilings and doors to achieve 60 minute fire resistant construction.
- FD60 - Fire Door 60min Resistance.
- Disabled Refuge Area - 900 x 1400mm
- Occupancy level within area
- Escape Route Unprotected
- Escape Direction Angle
- Escape Route Protected/Shared
- Minimum Clear Widths
- Exit No.

Escape Route Widths

In line with Sections 3.21 & 3.22 of 'Approved Document Part B, Volume 2 - buildings other than dwellings' - the adjacent calculations provide justification for the clear opening widths for escape from each floor level/ room in accordance with Table 4 & Appendix C.

Second Floor

Exit 3 Clear Opening Width = 1050mm (allows 220 persons to escape)
 Exit 4 Clear Opening Width = 850mm (allows 110 persons to escape)
 Exit 3 Largest opening and discounted.

Total Aggregate Width for Floor (Less Largest Opening Width of 1050mm from Exit 2) = 850mm

Ground Floor Total Estimated Occupancy Capacity = 110 Persons

Exit 4 provides a min. width of 850mm and would allow a max. No. of 110 persons to escape, which is sufficient for the total estimated occupancy capacity of 110 Persons and is therefore thought to meet with the Approved Document Part B.

First Floor

Exit 1 Clear Opening Width = 1050mm (allows 220 persons to escape)
 Exit 2 Clear Opening Width = 850mm (allows 110 persons to escape)
 Exit 1 Largest opening and discounted.

Total Aggregate Width for Floor (Less Largest Opening Width of 1050mm from Exit 2) = 850mm

Ground Floor Total Estimated Occupancy Capacity = 110 Persons

Exit 2 provides a min. width of 850mm and would allow a max. No. of 110 persons to escape, which is sufficient for the total estimated occupancy capacity of 110 Persons and is therefore thought to meet with the Approved Document Part B.

Ground Floor - Final Exit

Exit 1 and 3 share the same protected escape and final Exit 6 having a clear width of at least 1050mm and have a combined escape capacity of 220 people.

Exit 2 and 4 share the same protected escape and final Exit 5 having a clear width of at least 1050mm and have a combined escape capacity of 220 people.

Rev	Date	Description	Drawn/	Checked
REVISIONS				
LBF - Archer Road Sheffield			DRAWING TITLE Method of Escape	
DRAWN/ CHECKED	DATE	SCALE	JOB No.	DRAWING No.
EK	25.11.18	1:100@A1 / 1:200@A3	LA/LBF-014	003-MOE
CONSTRUCTION				
			Pure Gym Ltd Town Centre House The Merrion Centre Leeds LS2 8LY e: architecture@puregym.com t: 0113 285 8787 w: www.puregym.com	