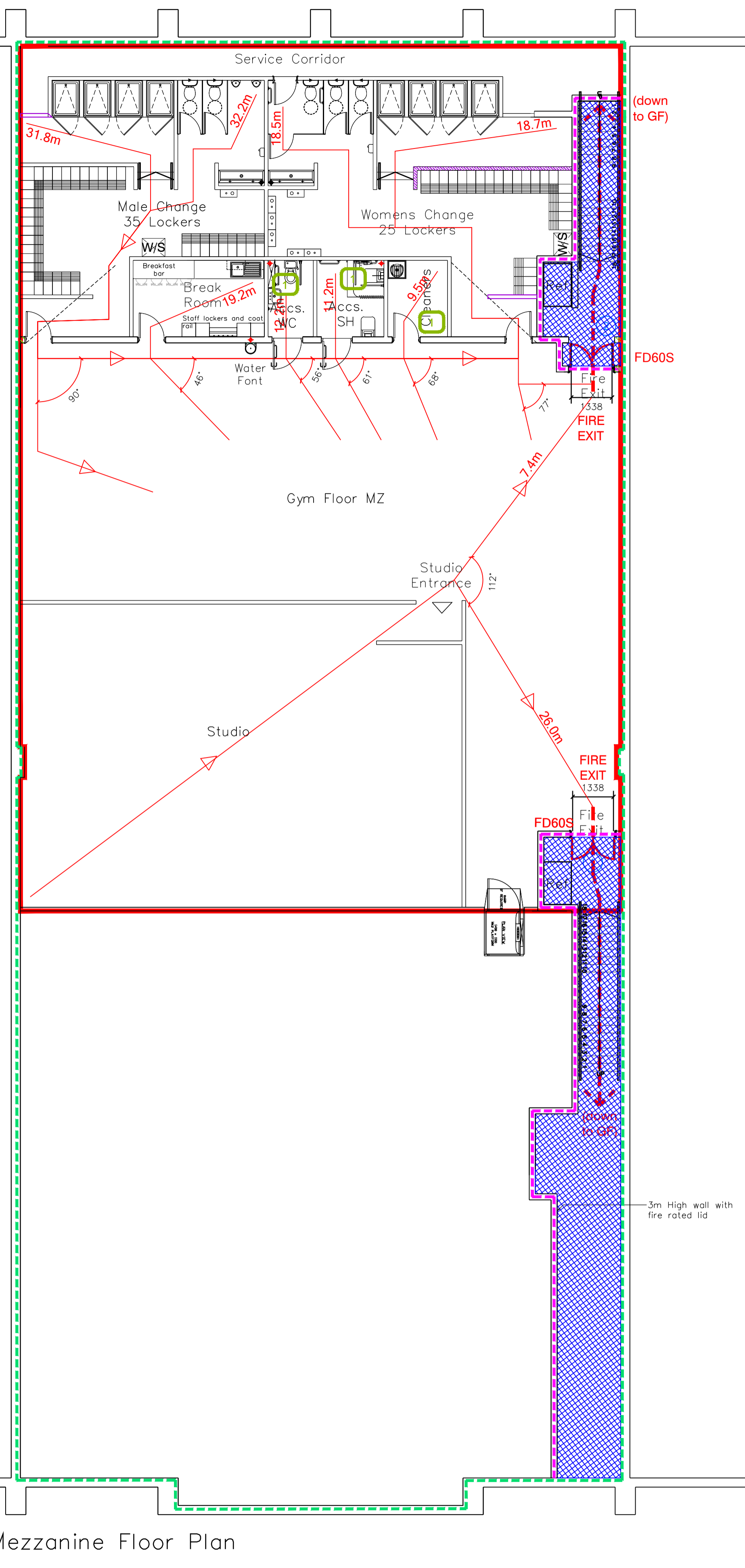
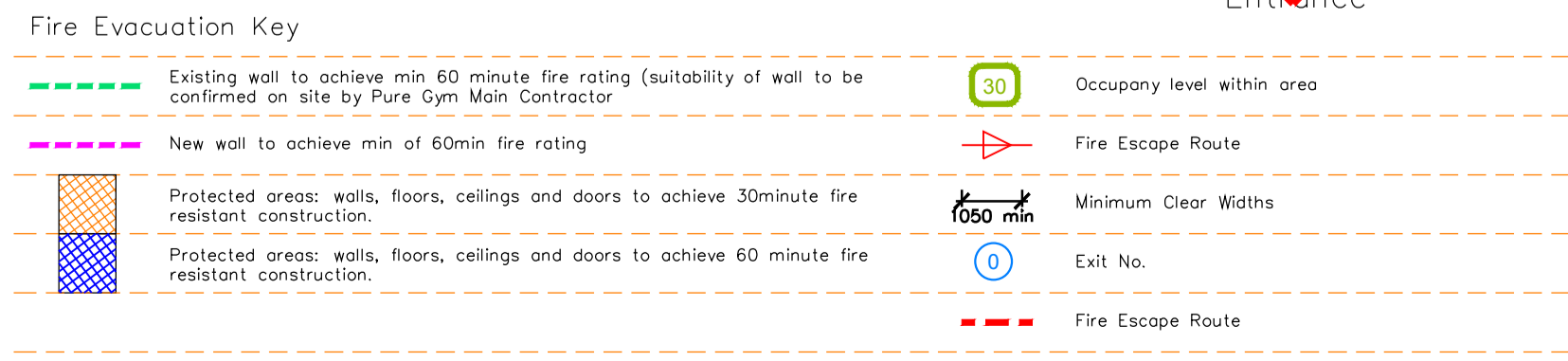


Proposed Ground Floor Plan



Proposed Mezzanine Floor Plan



Escape Route Widths
 In line with Sections 3.21 & 3.22 of 'Approved Document Part B, Volume 2 - buildings other than dwellings' - the adjacent calculations provide justification for the clear opening widths for escape from each floor level/ room in accordance with Table 4 & Appendix C.

Ground Floor
 Exit 1 Clear Opening Width = 850mm (lowest 10 persons to escape)
 Exit 2 Clear Opening Width = 1100mm (largest opening to be discounted)
 Total Aggregate Width for Floor (Less Largest Opening Width of 1100mm from Exit 2) = 850mm
 Ground Floor Total Estimated Occupancy Capacity = 107 Persons
 Exit 1 provides a min. width of 850mm and would allow a max. No. of 110 persons to escape, which is larger than the total estimated occupancy capacity of 107 Persons and is therefore thought to meet with the Approved Document Part B.

Sprinklers
 System design and installed in compliance with BS EN 12845:2015 & LPC Technical Bulletins

Fire Alarm
 Fire Alarm designed and installed to BS 5839, Smoke & heat detection / emergency lighting by specialist. Please refer to M&E engineer's drawings / specifications.

Escape Lighting
 Emergency escape lighting designed and installed in accordance with BS 5266: Part 1. Please refer to M&E Engineer's drawings for final layout and specification.

Rev	Date	Description	Drawn/Check
E	23.10.18	Updated following site visit.	AT/PG
D	12.10.18	Spin studio walls updated. Ramp updated to free weights.	AT/PG
C	10.10.18	Updated following operations comments	AT/PG
B	10.10.18	Updated following site visit	AT/PG
A	20.09.18	Spin - Entrance repositioned facing the night lockers. New wall running off entrance wall. Travel distance amended to reflect this change.	RSP/GL

Unit L, Cardiff Bay Retail Park, Ferry Road, Cardiff, CF11 0JR		Fire Escape Plans Ground & Mezzanine Floor	
DATE	14.09.18	SCALE	1:100 @ A2
DRAWN / CHECKED	RSP / GL	JOB No.	016
DRAWING No.	003 MEP	REV	E

CONSTRUCTION

Pure Gym Ltd
 Town Centre House
 The Merion Centre
 Leeds
 LS2 8LY
 e: architecture@puregym.com
 t: 0113 225 8787
 w: www.puregym.com