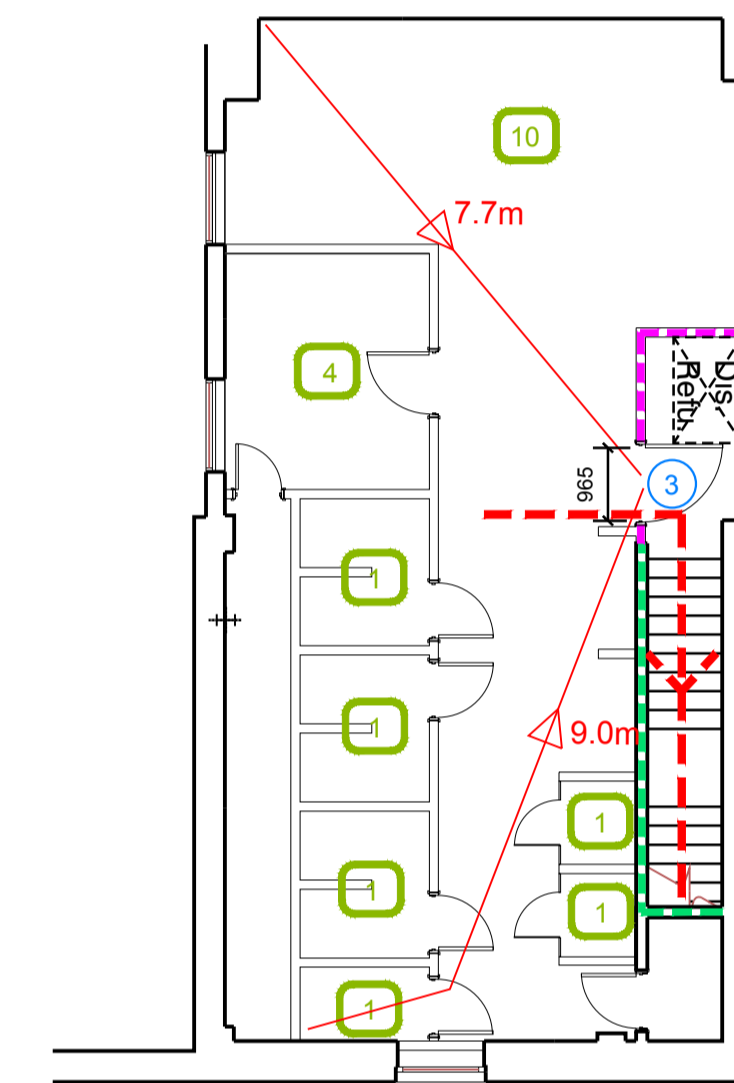


Proposed Ground Floor Plan



Proposed Mezzanine Floor Plan

KEY

- New wall to achieve 60 minute fire rating
- Existing wall to achieve 60 minute fire rating (suitability of wall to be confirmed on site by main contractor with puregym)
- Protected areas: walls, floors, ceilings and doors to achieve 30 minute fire resistant construction.
- Area of special fire risk: walls / floors / ceilings and doors to achieve 60 minute resistant construction.
- Fire escape route
- 30 Occupancy level within area
- 0.0m
62° Travel distances and angles
- 0 EXIT NO.
- ← 000 → CLEAR OPENING WIDTH'S

Escape Route Widths

In line with Sections 3.21 & 3.22 of 'Approved Document Part B, Volume 2 - buildings other than dwellings' - the adjacent calculations provide justification for the clear opening widths for escape from each floor level/ room in accordance with Table 4 & Appendix C.

Ground Floor

Exit 1 Clear Opening Width = 1788mm (largest opening to be discounted)
Exit 2 Clear Opening Width = 863mm (allows 110 persons to escape)

Total Aggregate Width for Floor (Less Largest Opening Width of 1788mm from Exit 1) = 863mm

Ground Floor Total Estimated Occupancy Capacity = 91 Persons

Exit 2 provides a min. width of 850mm and would allow a max. No. of 110 persons to escape, which is larger than the total estimated occupancy capacity of 91 Persons and is therefore thought to meet with the Approved Document Part B.

Mezzanine Floor

Exit 3 Clear Opening Width = 965mm (allows 110 persons to escape)

Total Aggregate Width for Floor = 965mm

Basement Floor Total Estimated Occupancy Capacity = 20 Persons

Exit 3 provides a min. width of 850mm and would allow a max. No. of 110 persons to escape, which is larger than the total estimated occupancy capacity of 20 Persons and is therefore thought to meet with the Approved Document Part B.

Rev	Date	Description	DRAWING TITLE	Drawn/ Checked
		Unit 3, The Clink Retail Park		
		Bridgwater, Somerset, TA6 4AB		
		Means Of Escape Plan Ground & Mezzanine Floors		
		SCALE	LOG No.	DRAWING No.
		LM/PG	04.10.18	1:100 @A1
		DRAWING PURPOSE	IA-SBF-008	003
CONSTRUCTION				
 Pure Gym Ltd Town Centre House The Merrion Centre Leeson LS2 8LY e: architecture@puregym.com t: 0113 285 8787 w: www.puregym.com 				