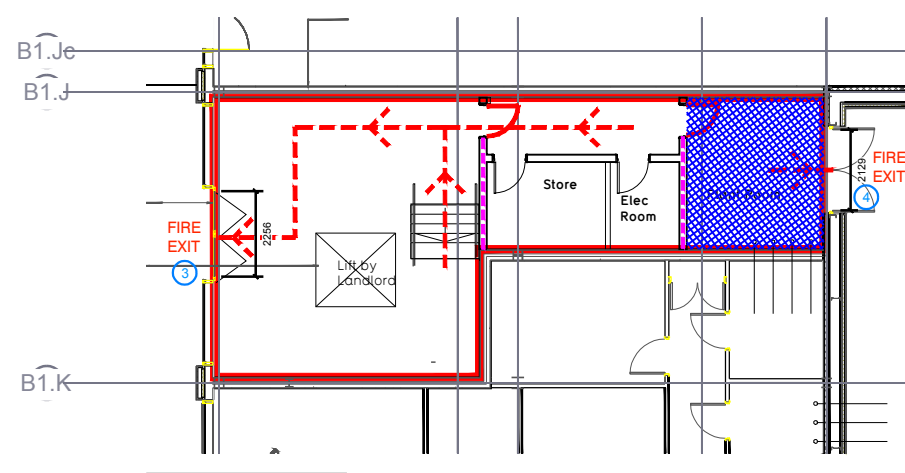
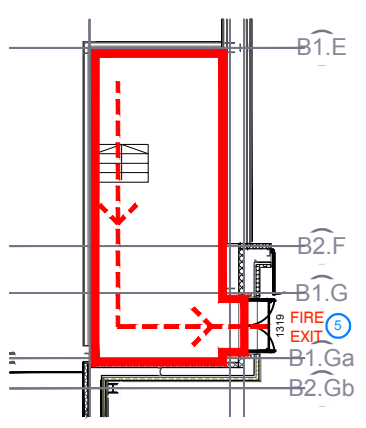


FIRST FLOOR



GROUND FLOOR



- KEY:**
FIRE EVACUATION PLAN
- New wall to achieve 60 minute fire rating.
 - Existing wall to achieve 60 minute fire rating (suitability of wall to be confirmed on site by main contractor with PureGym)
 - Protected areas: walls, floors, ceilings and doors to achieve 30 minute fire resistant construction.
 - Area of special fire risk: walls / floors / ceilings and doors to achieve 60 minute resistant construction.
 - ↔ 30.4m Travel distance, direction of travel escape in 2 directions angle.
 - Fire escape route.
 - 30 Occupancy level within area.
 - M FD60 - Fire Door 60min Resistance.
 - M FD30 - Fire Door 60min Resistance.

Escape Route Widths

In line with Sections 3.21 & 3.22 of 'Approved Document Part B, Volume 2 - buildings other than dwellings' - the adjacent calculations provide justification for the clear opening widths for escape from each floor level/ room in accordance with Table 4 & Appendix C.

First Floor

Exit 1 Clear Opening Width = 2155mm (largest opening to be discounted)
Exit 2 Clear Opening Width = 1638mm (allows 220 persons to escape)

Total Aggregate Width for Floor (Less Largest Opening Width of 2155mm from Exit 1) = 1638mm

First Floor Total Estimated Occupancy Capacity = 220 Persons

Exit 2 provides a min. width of 1638mm and would allow a max. No. of 220 persons to escape, which is larger than the total estimated occupancy capacity of 220 Persons. At the ground floor termination of the escape stair core Exit 5 provides a clear width of 1319mm allowing the continued escape and is therefore thought to meet with the Approved Document Part B.

| | | | |
|--------------------------|----------|--|---------------------|
| Rev | Date | Description | Drawn/ Checked |
| DRAWING TITLE | | | |
| LBF - Thorpe Park, Leeds | | Method of Escape | |
| DRAWN / CHECKED | DATE | SCALE | JOB No. DRAWING No. |
| EK/PG | 22.08.18 | 1:100@A1 / 1:200@A3 | IA-LBF-012 003-MOE |
| CONSTRUCTION | | | |
| | | Pure Gym Ltd Town Centre House The Merrion Centre Leeds LS2 8LY e: architecture@puregym.com t: 0113 285 8797 w: www.puregym.com | |