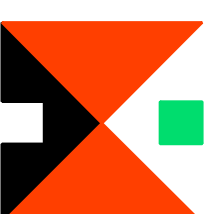


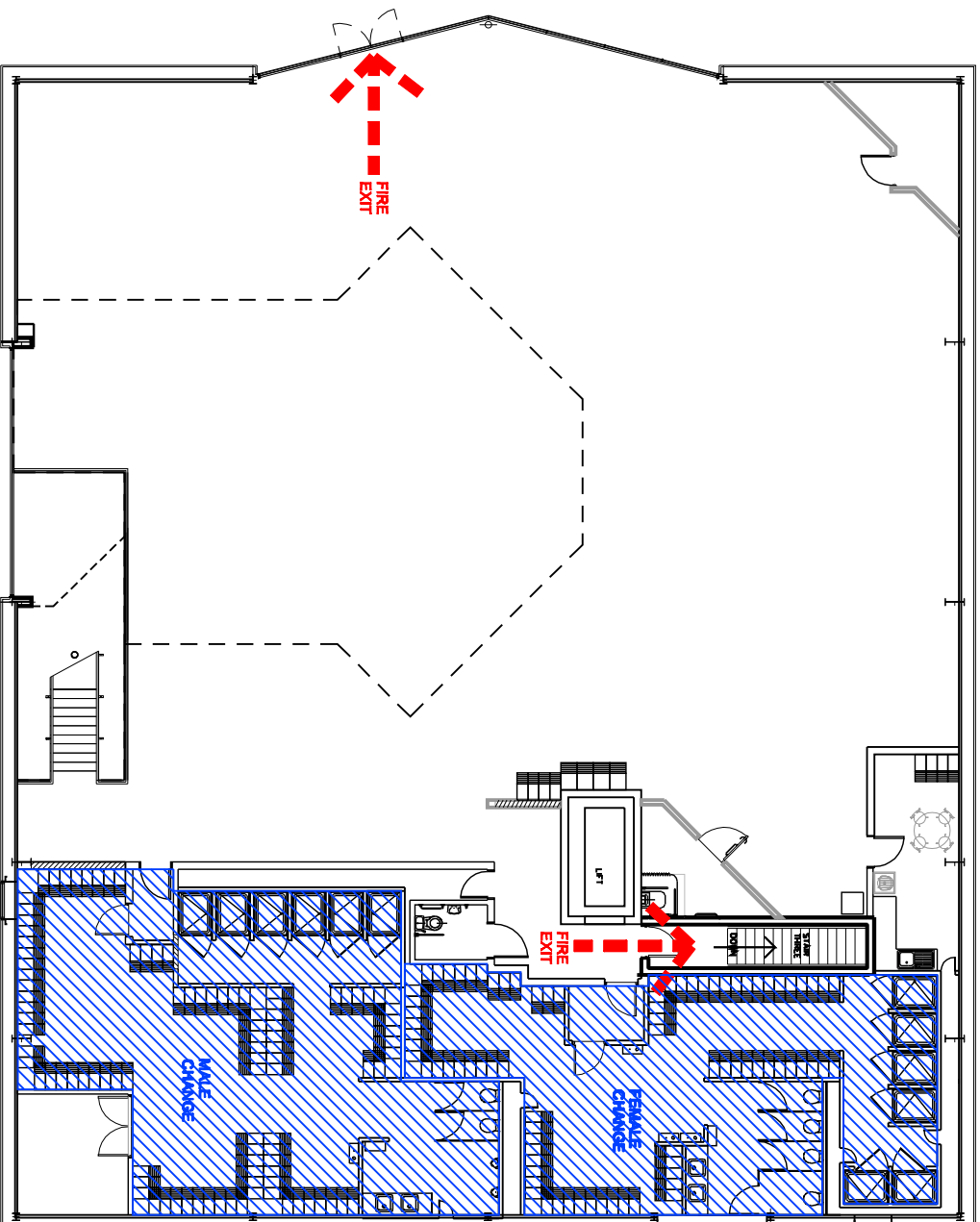
B 02.11.12 DRAWING ISSUED FOR RECORD G9 HM
 A 24.06.12 SUN AND PT SWAPPED; EXISTING WALL TO FREE WEIGHTS RETAINED; STAGE ADDED TO STUDIO; WALL BETWEEN STUDIO AND FREE WEIGHTS AMENDED TO BE FULL HEIGHT; OPENING TO STUDIO REDUCED TO 1.8m; FEATURE LIGHTING ADDED GL HM
 REV DATE DESCRIPTION DRY CHK

MICHAEL HYDE AND ASSOCIATES LIMITED
Chartered architects

MANCHESTER ■ SHEFFIELD □
 51 BARTON ARCADE ALLIANCE HOUSE
 DEANSGATE LEOPOLD STREET
 MANCHESTER M3 2SU SHEFFIELD S1 2GY
 TEL 0161 834 1018 TEL 0114 2789666
 FAX 0161 834 4798 FAX 0114 2787751
 Manchester@MHA Sheffield@MHA
 architects.com architects.com

| | | | |
|--|----------|------------|--|
| PROJECT TITLE | | | |
| PURE GYM LTD HEMPSHAW LANE, STOCKPORT | | | |
| DRAWING TITLE | | | |
| GROUND FLOOR FIRE PLAN | | | |
| DRAWN/CHECKED | DATE | SCALE | |
| LM/HM | JULY '12 | 1:200 @ A3 | |
| JOB NO | DRAWING | REVISIONS | |
| 1PG39 | 2-600 | B | |





- B 02.11.12 DRAWING ISSUED FOR RECORD
 - A 24.06.12 EXISTING STONE RETAINED; SHOWERS TO FEMALE CHANGING
AMENDED; G. SINK ADDED TO STAFF; EXISTING WALLS TO BE
RETAINED ADDED; FEATURE LIGHTING ADDED
- GG NHM
DL NHM
DRW CHK

PROJECT TITLE
PURE GYM LTD
HEMPSHAW LANE, STOCKPORT

DRAWING TITLE
FIRE PLAN

DRAWN/CHECKED
LM/HM

DATE
JULY '12

SCALE
1:200 @ A3

JOB NO
1PG39

DRAWING
2-601

REVISIONS
B

MICHAEL HYDE AND ASSOCIATES LIMITED
Chartered architects

MANCHESTER ■ SHEFFIELD □

51 BARTON ARCADE ALLIANCE HOUSE
 DEANSGATE LEOPOLD STREET
 MANCHESTER M3 2SU SHEFFIELD S1 2GY
 TEL 0161 834 1018 TEL 0114 2789666
 FAX 0161 834 4788 FAX 0114 2787751
 Manchester@MHA Sheffield@MHA
 architects.com architects.com

