

**NEW POSITION OF
EXISTING SIGNAGE
TOTUM**

MICHAEL HYDE AND ASSOCIATES LIMITED
Chartered architects

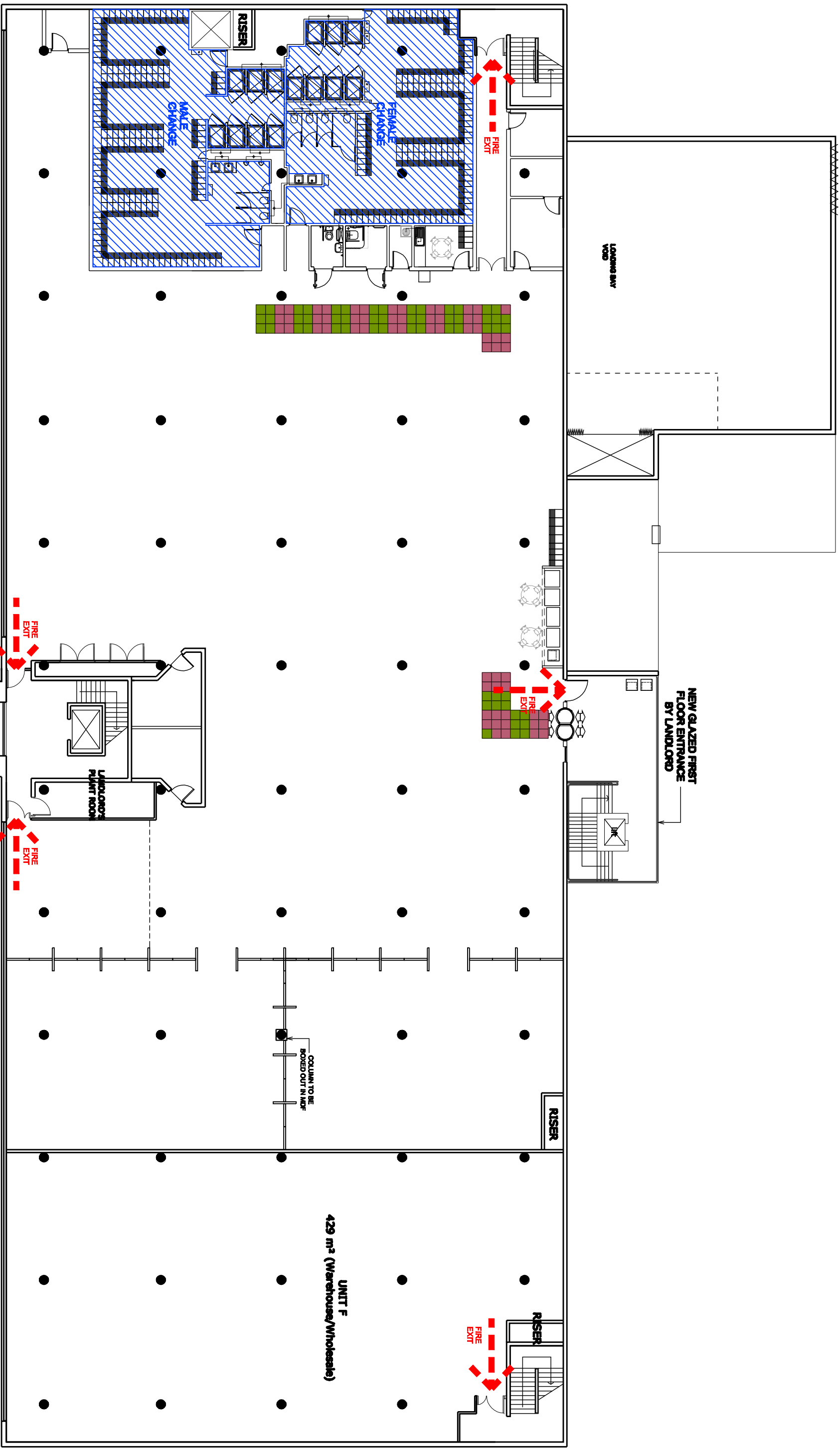
MANCHESTER ■ **SHEFFIELD** □

51 BARTON ARCADE
DEANSGATE
MANCHESTER M3 2SU
TEL 0161 834 1018
FAX 0161 834 4798
Manchester@MHA
architects.com

ALLIANCE HOUSE
LEOPOLD STREET
SHEFFIELD S1 2GY
TEL 0114 2789666
FAX 0114 2787751
Sheffield@MHA
architects.com

REV	DATE	DESCRIPTION	DRN	CHK

PROJECT TITLE		PURE GYM LTD	
SOVEREIGN HOUSE, NOTTINGHAM			
DRAWING TITLE		GROUND FLOOR	
FIRE PLAN			
DRAWN/CHECKED	DATE	SCALE	REVISIONS
GG/HM	APR '12	1:250 @ A3	
JOB No	DRAWING	2-600	
1PG38			



MICHAEL HYDE AND ASSOCIATES LIMITED
Chartered architects

MANCHESTER ■ SHEFFIELD □

51 BARTON ARCADE ALLIANCE HOUSE
 DEANSGATE LEOPOLD STREET
 MANCHESTER M3 2SU SHEFFIELD S1 2GY
 TEL 0161 834 1018 TEL 0114 2789666
 FAX 0161 834 4788 FAX 0114 2787751
 Manchester@MHA Sheffield@MHA
 architects.com architects.com

REV	DATE	DESCRIPTION	DRN	CHK
PROJECT TITLE PURE GYM LTD SOVEREIGN HOUSE, NOTTINGHAM				
DRAWING TITLE FIRST FLOOR FIRE PLAN				
DRAWN/CHECKED GG/HM	DATE APR '12	SCALE 1:200 @ A3		
JOB No 1PG38	DRAWING 2-601	REVISIONS -		