

MICHAEL HYDE AND ASSOCIATES LIMITED
Chartered architects



MANCHESTER ■ SHEFFIELD □

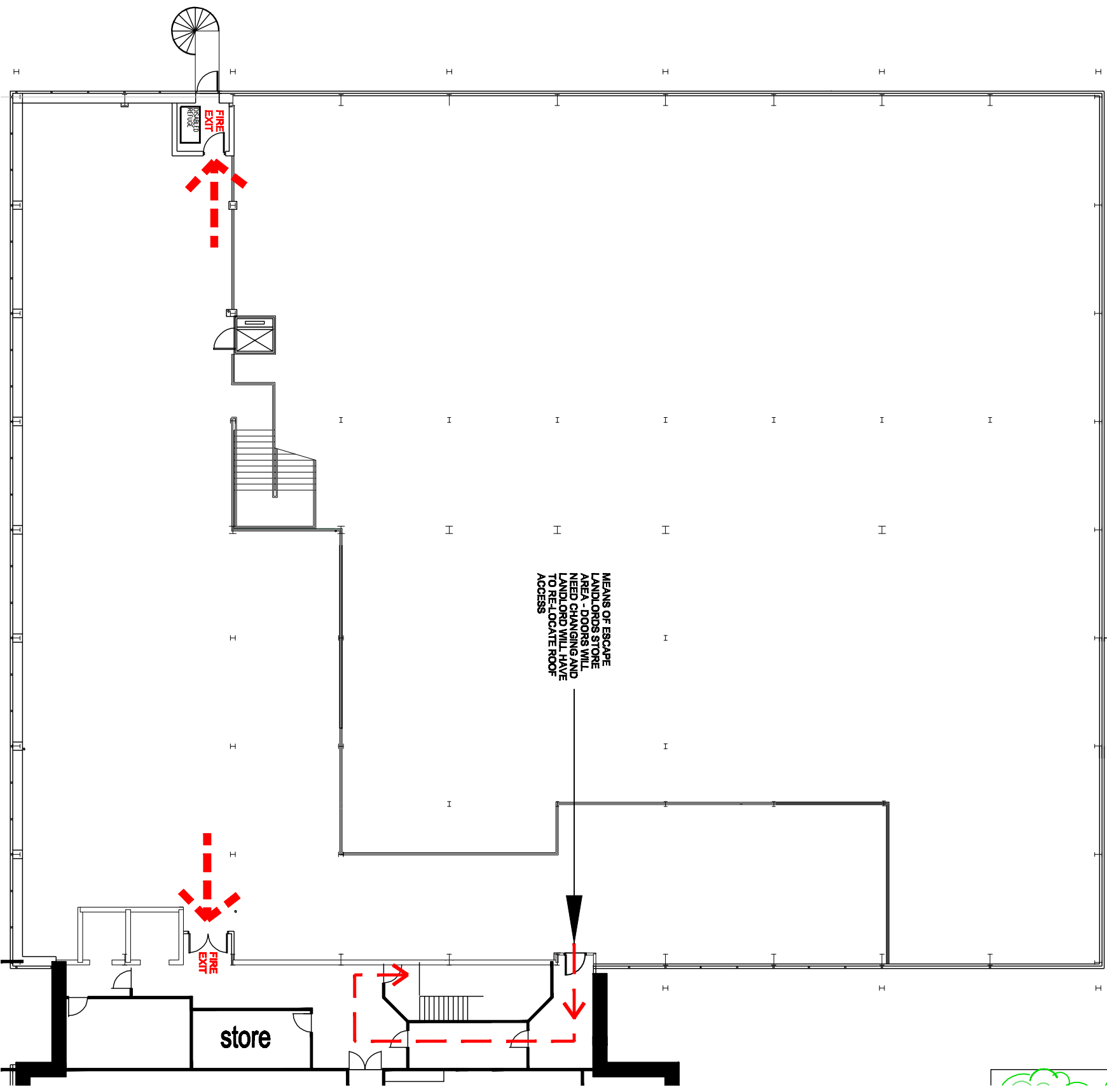
51 BARTON ARCADE
 DEANSGATE
 MANCHESTER M3 2BJ
 TEL 0161 834 1018
 FAX 0161 834 4798
 Manchester@MHA
 architects.com

ALLIANCE HOUSE
 LEOPOLD STREET
 SHEFFIELD S1 2GY
 TEL 0114 2789666
 FAX 0114 2787751
 Sheffield@MHA
 architects.com

- B 08.10.12 DRAWING UPDATED TO MATCH LANDLORDS PROPOSALS CW HM
 - A 13.06.12 FIRE PLAN UPDATED TO REFLECT RE-LOCATED ENTRANCE TO MALE CHANGE, OFFICE, GYM, PT, STORE AND VENDING AND THE ADDED PLANT ROOM CW HM
- REV DATE DESCRIPTION DRY CHK

PROJECT TITLE
PURE GYM LTD
WINTERHILL HOUSE, MILTON KEYNES

DRAWING TITLE			
GROUND FLOOR			
FIRE PLAN			
DRAWN/CHECKED	DATE	SCALE	
LM/GL	17.05.12	1:200 @ A3	
JOB NO	DRAWING	REVISIONS	
1PG44	2-600	B	



MICHAEL HYDE AND ASSOCIATES LIMITED
Chartered architects

MANCHESTER ■ SHEFFIELD □

51 BARTON ARCADE
 DEANSGATE
 MANCHESTER M3 2SU
 TEL 0161 834 1018
 FAX 0161 834 4798
 Manchester@MHA
 architects.com

ALLIANCE HOUSE
 LEOPOLD STREET
 SHEFFIELD S1 2GY
 TEL 0114 2789666
 FAX 0114 2787751
 Sheffield@MHA
 architects.com

- B 03.10.12 DRAWING UPLOADED TO MATCH LANDLORDS PROPOSALS CW HM
- A 13.08.12 FIRE PLAN UPDATED TO REFLECT RELOCATED ENTRANCE TO MALE CHANGE, OFFICE, GYM, PT, STORE AND VENDING AND THE ADDED PLANT ROOM TO THE GF CW HM
- REV DATE DESCRIPTION DRY CHK

PROJECT TITLE
PURE GYM LTD
WINTERHILL HOUSE, MILTON KEYNES

DRAWING TITLE
MEZZANINE FLOOR
FIRE PLAN

DRAWN/CHECKED	DATE	SCALE
LM/GL	17.05.12	1:200 @ A3
JOB NO	DRAWING	REVISIONS
1PG44	2-601	B