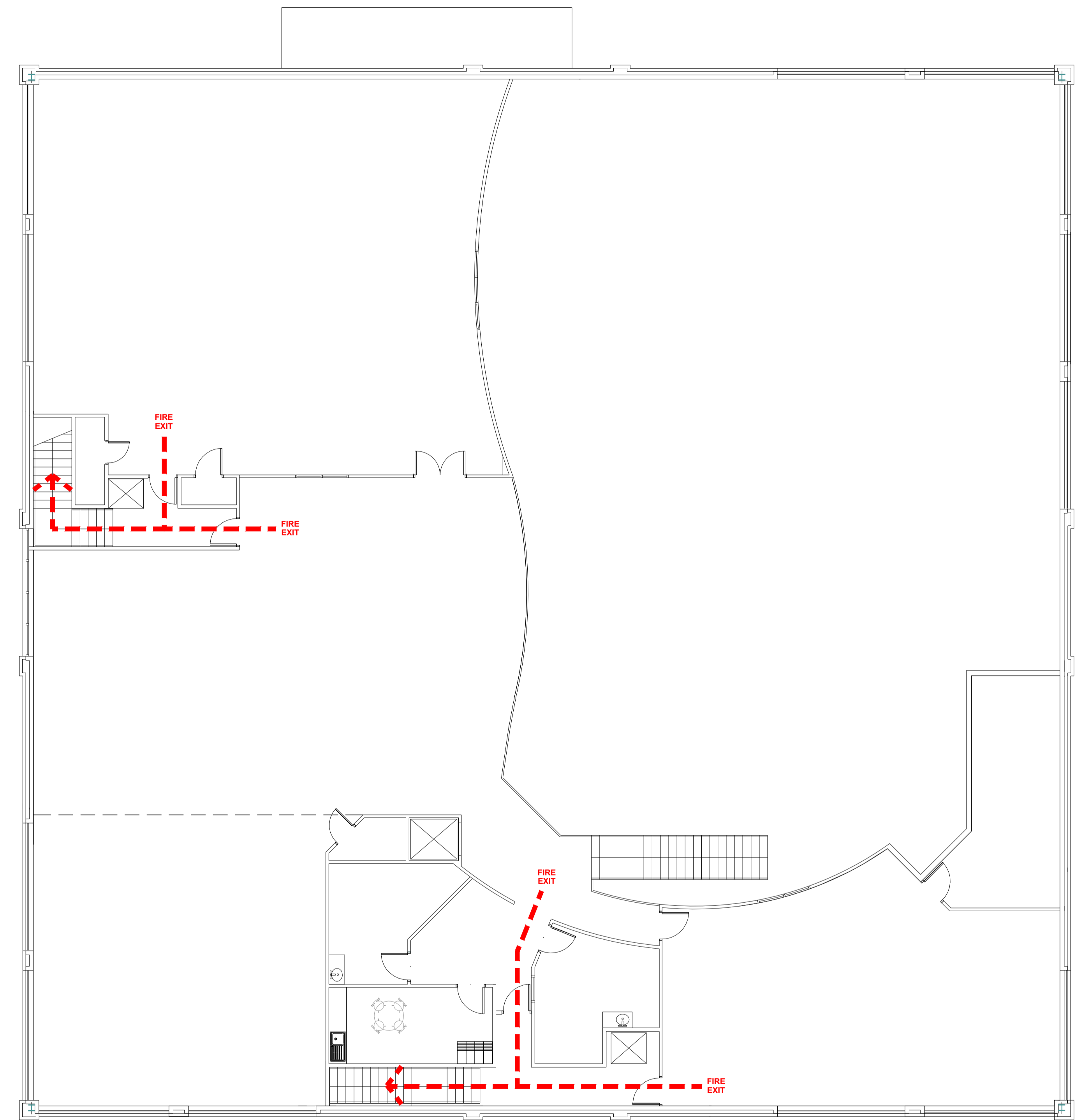


Ground Floor



First Floor

MICHAEL HYDE AND ASSOCIATES LIMITED <i>chartered architects</i>		<small>REV DATE DESCRIPTION</small> <small>DRW CHK</small>	
<small>MANCHESTER</small> ■ <small>SHEFFIELD</small> □		<small>PROJECT TITLE</small> PURE GYM LTD DEBDALE PARK, MANCHESTER	
<small>S1 BARTON ARCADE</small> <small>DEANSGATE</small> <small>MANCHESTER M3 2BQ</small> <small>TEL 0161 834 1318</small> <small>FAX 0161 834 4798</small> <small>Manchester@MHA</small> <small>architects.com</small>		<small>DRAWING TITLE</small> PROPOSED FLOOR PLANS FIRE PLAN	
<small>ALLIANCE HOUSE</small> <small>LEOPOLD STREET</small> <small>SHEFFIELD S1 2DQ</small> <small>TEL 0114 2759696</small> <small>FAX 0114 2757751</small> <small>Sheffield@MHA</small> <small>architects.com</small>		<small>DRAWN/CHECKED</small> CY/HM	<small>DATE</small> OCT '13
		<small>SCALE</small> 1:100@A3	<small>REVISIONS</small> -
<small>JOB No</small> 1PG63		<small>DRAWING</small> 2-600	